



MLS 6690969 Lake Home

\$235,000

1,290 sq ft
3 bedrooms
1 baths

42491 432nd Lane
Aitkin MN 56431

Waterfront: Blind

Status: Active

Description:

Blind lake home, with deeded/shared Lake access and almost an acre and a half on a dead-end road! Home has 3 bedrooms and 1 full bath, Kitchen/dining and bathroom were remodeled in approx. 2007, the same time 2 bedrooms were added. Also has a walkout basement ready for you to finish and make it your own! Enjoy all the area has to offer, Blind Lake, miles and miles of ATV/Snowmobile trails, 100's of acres of State Land right across the lake and the surrounding area, and Conveniences in the town of Aitkin only 10 minutes away.

Additional Details:

Year Built	1979
Lot Acres	1.44
Lot Dimensions	irregular
Garage Stalls	3
School District	8001
Taxes	\$1,034
Taxes with Assessments	\$1,034
Tax Year	2024

Additional Features:

Fuel: Electric, Wood **Heat:** Baseboard, Dual, Radiant Floor

Driving Directions:

From Aitkin take County Rd. 1 North, curve left to go on County Rd. 22 then take Right onto 432nd Ln. to property on Right. (Property is Approx. 11 miles North of Aitkin)



Listed By:
Realty Group LLC

Affinity Real Estate Inc. participates in the Regional Multiple Listing Service of Minnesota, Inc Broker Reciprocity (sm) program, allowing us to display other broker's listings on our website. All properties are subject to prior sale, change or withdrawal.



Call Affinity Real Estate

218-237-3333

info@affinityrealestate.com



Affinity Real Estate - 600 Park Avenue South - Park Rapids MN 56470



website: www.AffinityRealEstate.com | email: info@affinityrealestate.com | office: 218-237-3333 | fax: 218-237-3377

Affinity
REAL ESTATE INC

\$235,000
MLS 6690969 Lake Home
42491 432nd Lane
Aitkin MN 56431



website: www.AffinityRealEstate.com | email: info@affinityrealestate.com | office: 218-237-3333 | fax:218-237-3377



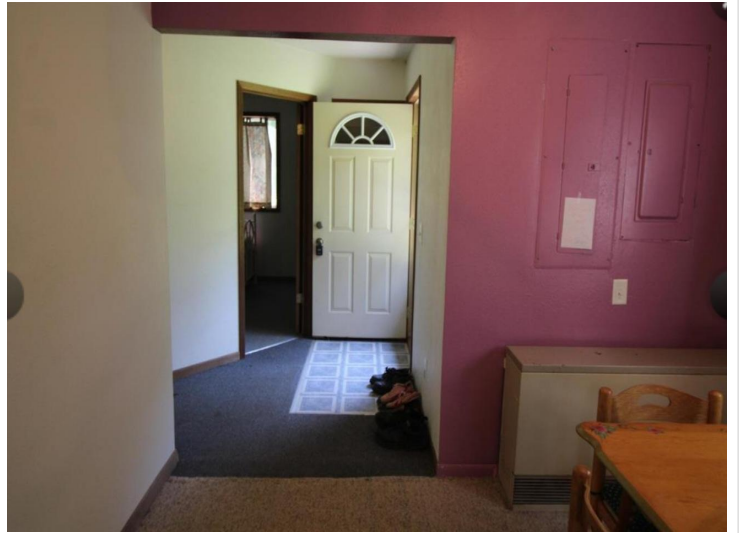
\$235,000
MLS 6690969 Lake Home
42491 432nd Lane
Aitkin MN 56431



website: www.AffinityRealEstate.com | email: info@affinityrealestate.com | office: 218-237-3333 | fax:218-237-3377

Affinity
REAL ESTATE INC

\$235,000
MLS 6690969 Lake Home
42491 432nd Lane
Aitkin MN 56431



website: www.AffinityRealEstate.com | email: info@affinityrealestate.com | office: 218-237-3333 | fax:218-237-3377

Affinity
REAL ESTATE INC

\$235,000
MLS 6690969 Lake Home
42491 432nd Lane
Aitkin MN 56431



website: www.AffinityRealEstate.com | email: info@affinityrealestate.com | office: 218-237-3333 | fax:218-237-3377

Affinity
REAL ESTATE INC

\$235,000
MLS 6690969 Lake Home
42491 432nd Lane
Aitkin MN 56431



website: www.AffinityRealEstate.com | email: info@affinityrealestate.com | office: 218-237-3333 | fax:218-237-3377

Affinity
REAL ESTATE INC

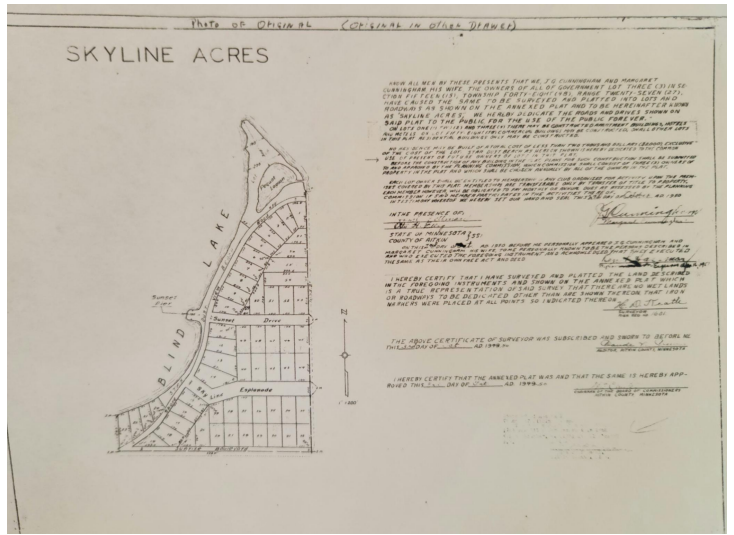
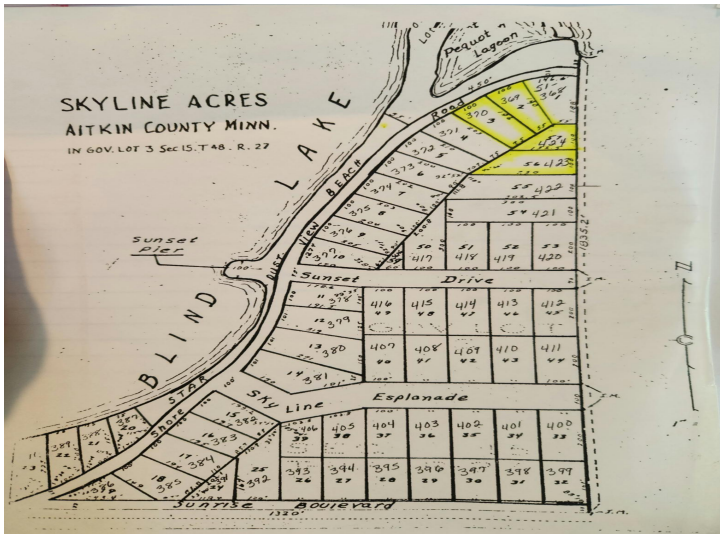
\$235,000
MLS 6690969 Lake Home
42491 432nd Lane
Aitkin MN 56431



website: www.AffinityRealEstate.com | email: info@affinityrealestate.com | office: 218-237-3333 | fax:218-237-3377

Affinity
REAL ESTATE INC

\$235,000
MLS 6690969 Lake Home
42491 432nd Lane
Aitkin MN 56431



website: www.AffinityRealEstate.com | email: info@affinityrealestate.com | office: 218-237-3333 | fax: 218-237-3377



\$235,000
 MLS 6690969 Lake Home
 42491 432nd Lane
 Aitkin MN 56431