



MLS 6691007 Lake Land

\$161,500

Description:

Beautifully wooded large lake shore parcels on the Turtle Lake chain north of Bemidji. East facing lots on Little Turtle Lake. Mature hardwood trees with great views and reasonable elevation to a great body of water. Easement access to the parcels.

Additional Details:

Lot Acres	15.63
Lot Dimensions	400x1400
School District	31
Taxes	\$312
Taxes with Assessments	\$312
Tax Year	2024

Additional Features:

Driving Directions:

North on Irvine Ave 8 miles, left on Silver Lake Rd NW, road turns right and becomes Puposky Rd. Continue for 2.5 miles. Right at #17694. When driveway splits - Lots A & C are to the left and Lots D, E, F are to the right.



Listed By:
Century 21 Dickinson

Affinity Real Estate Inc. participates in the Regional Multiple Listing Service of Minnesota, Inc Broker Reciprocity (sm) program, allowing us to display other broker's listings on our website. All properties are subject to prior sale, change or withdrawal.



Call Affinity Real Estate

218-237-3333

info@affinityrealestate.com



Affinity Real Estate - 600 Park Avenue South - Park Rapids MN 56470



website: www.AffinityRealEstate.com | email: info@affinityrealestate.com | office: 218-237-3333 | fax: 218-237-3377



\$161,500
 MLS 6691007 Lake Land
 C Puposky Road
 Bemidji MN 56601



website: www.AffinityRealEstate.com | email: info@affinityrealestate.com | office: 218-237-3333 | fax: 218-237-3377



\$161,500
 MLS 6691007 Lake Land
 C Puposky Road
 Bemidji MN 56601



website: www.AffinityRealEstate.com | email: info@affinityrealestate.com | office: 218-237-3333 | fax: 218-237-3377



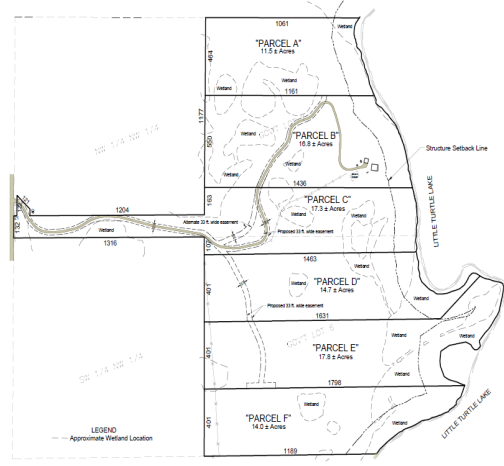
\$161,500
MLS 6691007 Lake Land
C Puposky Road
Bemidji MN 56601



SKETCH PLAN



SKETCH PLAN



website: www.AffinityRealEstate.com | email: info@affinityrealestate.com | office: 218-237-3333 | fax: 218-237-3377



\$161,500
MLS 6691007 Lake Land
C Puposky Road
Bemidji MN 56601