



MLS 6691014 Lake Land

\$174,250

Description:

Beautifully wooded large lake shore parcels on the Turtle Lake chain north of Bemidji. East facing lots on Little Turtle Lake. Mature hardwood trees with great views and reasonable elevation to a great body of water. Easement access to the parcels.

Additional Details:

Lot Acres	13.22
Lot Dimensions	400x1400
School District	31
Taxes	\$410
Taxes with Assessments	\$410
Tax Year	2024

Additional Features:

Driving Directions:

North on Irvine Ave 8 miles, left on Silver Lake Rd NW, road turns right and becomes Puposky Rd. Continue for 2.5 miles. Right at #17694. When driveway splits - Lots A & C are to the left and Lots D, E, F are to the right.



Listed By:
Century 21 Dickinson

Affinity Real Estate Inc. participates in the Regional Multiple Listing Service of Minnesota, Inc Broker Reciprocity (sm) program, allowing us to display other broker's listings on our website. All properties are subject to prior sale, change or withdrawal.



Call Affinity Real Estate

218-237-3333

info@affinityrealestate.com



Affinity Real Estate - 600 Park Avenue South - Park Rapids MN 56470



website: www.AffinityRealEstate.com | email: info@affinityrealestate.com | office: 218-237-3333 | fax: 218-237-3377



\$174,250

MLS 6691014 Lake Land
00000 Puposky Road
Bemidji MN 56601



website: www.AffinityRealEstate.com | email: info@affinityrealestate.com | office: 218-237-3333 | fax: 218-237-3377



\$174,250
 MLS 6691014 Lake Land
 00000 Puposky Road
 Bemidji MN 56601



website: www.AffinityRealEstate.com | email: info@affinityrealestate.com | office: 218-237-3333 | fax: 218-237-3377



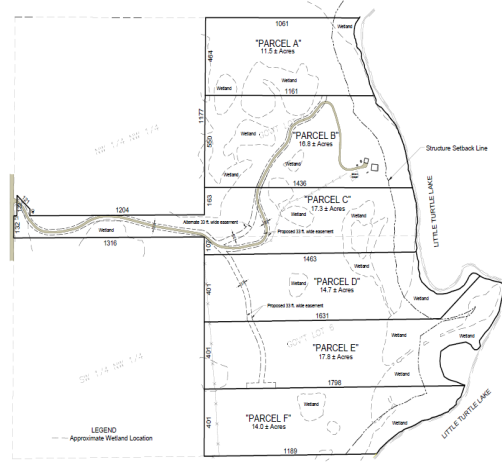
\$174,250
 MLS 6691014 Lake Land
 00000 Puposky Road
 Bemidji MN 56601



SKETCH PLAN



SKETCH PLAN



website: www.AffinityRealEstate.com | email: info@affinityrealestate.com | office: 218-237-3333 | fax: 218-237-3377



\$174,250
MLS 6691014 Lake Land
00000 Puposky Road
Bemidji MN 56601