



MLS 6691618 Residential

\$414,900

1,859 sq ft
3 bedrooms
2 baths

8446 Saint Mathias Road
Brainerd MN 56401

Status: Pending

Description:

Welcome to a charming country home set on a sprawling 10-acre property. With 3 bedrooms, 2 bathrooms, and an office currently used as a fourth bedroom, it is sure to meet your needs. The 28x36 heated and insulated shop is perfect for storage or working on your projects. Featuring newly finished hardwood floors and custom cabinets throughout, this home emanates a true craftsman feel. With maintenance-free siding, the entire interior freshly painted, and a newly painted front porch, you can simply relax. Enjoy the unobstructed views from the back deck, whether it's of your horses in the pasture or a landscape free from neighboring houses. There are many memories to be made at this home having so much room to breathe in that fresh country air! Conveniently located just outside of town, you are still within a quick drive to all the city amenities.

Additional Details:

Year Built	2005
Lot Acres	10.12
Lot Dimensions	35x1312
Garage Stalls	2
School District	181
Taxes	\$2,776
Taxes with Assessments	\$2,776
Tax Year	2024

Additional Features:

Fuel: Propane **Heat:** Forced Air

Driving Directions:

Take Hwy 371 south of Baxter and exit on "old" hwy 210 and head East towards Brainerd. St. Mathias Rd. will be on your right a few miles down the rd. After taking a rt your destination will be a couple miles down on your left Fire number 8446



Listed By:
Woods to Water Real Estate

Affinity Real Estate Inc. participates in the Regional Multiple Listing Service of Minnesota, Inc Broker Reciprocity (sm) program, allowing us to display other broker's listings on our website. All properties are subject to prior sale, change or withdrawal.



Call Affinity Real Estate

218-237-3333

info@affinityrealestate.com



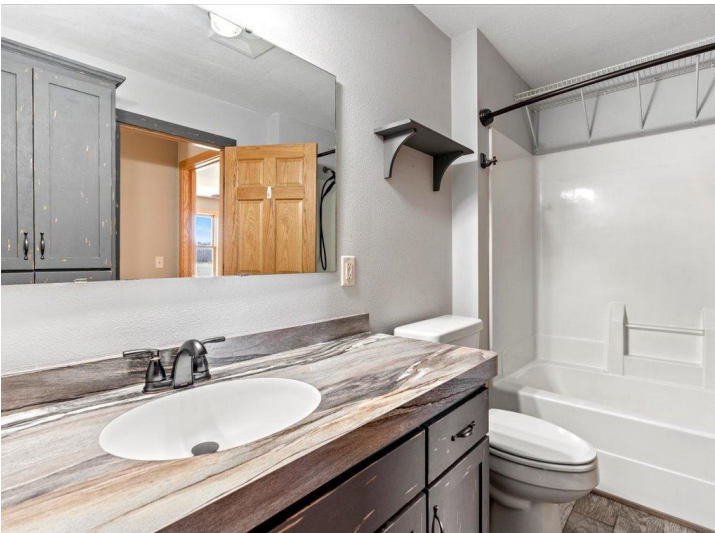
Affinity Real Estate - 600 Park Avenue South - Park Rapids MN 56470



website: www.AffinityRealEstate.com | email: info@affinityrealestate.com | office: 218-237-3333 | fax: 218-237-3377

Affinity
REAL ESTATE INC

\$414,900
MLS 6691618 Residential
8446 Saint Mathias Road
Brainerd MN 56401



website: www.AffinityRealEstate.com | email: info@affinityrealestate.com | office: 218-237-3333 | fax: 218-237-3377



\$414,900
 MLS 6691618 Residential
 8446 Saint Mathias Road
 Brainerd MN 56401



website: www.AffinityRealEstate.com | email: info@affinityrealestate.com | office: 218-237-3333 | fax: 218-237-3377

Affinity
REAL ESTATE INC

\$414,900
MLS 6691618 Residential
8446 Saint Mathias Road
Brainerd MN 56401



website: www.AffinityRealEstate.com | email: info@affinityrealestate.com | office: 218-237-3333 | fax: 218-237-3377



\$414,900
 MLS 6691618 Residential
 8446 Saint Mathias Road
 Brainerd MN 56401



website: www.AffinityRealEstate.com | email: info@affinityrealestate.com | office: 218-237-3333 | fax: 218-237-3377



\$414,900
 MLS 6691618 Residential
 8446 Saint Mathias Road
 Brainerd MN 56401



Page 7 of 8



website: www.AffinityRealEstate.com | email: info@affinityrealestate.com | office: 218-237-3333 | fax:218-237-3377



\$414,900

MLS 6691618 Residential
8446 Saint Mathias Road
Brainerd MN 56401