



MLS 6691771 Land

**\$19,500**

1.6 Acres  
Raw Land

Tbd\*\*\*\* Golf View Drive  
Pine River MN 56474

Status: Active

#### Description:

ALDER ASH ADDITION LOT 4-THIS PRIME 1.6 ACRE PARCEL HAS EXCELLENT DEVELOPMENT POTENTIAL FOR SINGLE FAMILY OR TOWNHOME SITES. ELECTRIC/PHONE ARE AVAILABLE WITH GOOD BLACKTOP ACCESS AND CLOSE PROXIMITY TO CITY AMENITIES.

#### Additional Details:

Lot Acres	1.6
Lot Dimensions	41x140x226x189x110x85x145x403
School District	2174
Taxes	\$50
Taxes with Assessments	\$50
Tax Year	2025

#### Additional Features:

#### Driving Directions:

1 MILE W. OF 371 ON CR #2 (24TH ST. SW) TO 28TH AVE. SW THEN RIGHT ON 28TH STRAIGHT AHEAD TO PROPERTY.



Listed By:  
Heartland Real Estate

Affinity Real Estate Inc. participates in the Regional Multiple Listing Service of Minnesota, Inc Broker Reciprocity (sm) program, allowing us to display other broker's listings on our website. All properties are subject to prior sale, change or withdrawal.



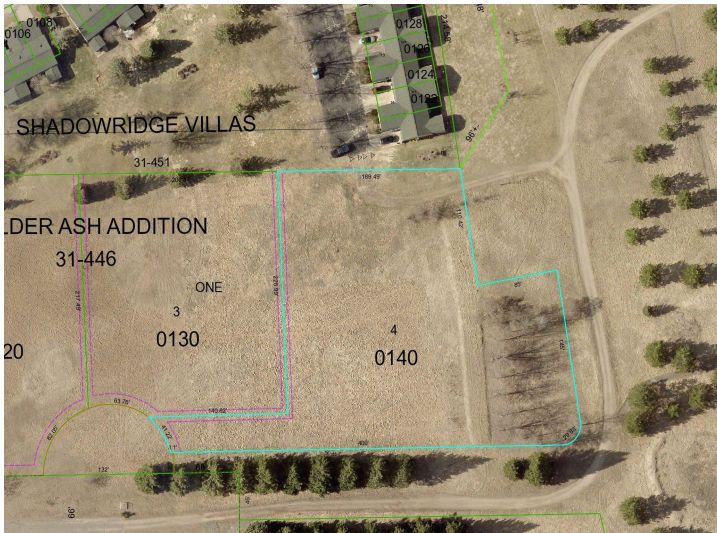
Call Affinity Real Estate

**218-237-3333**

[info@affinityrealestate.com](mailto:info@affinityrealestate.com)



Affinity Real Estate - 600 Park Avenue South - Park Rapids MN 56470



website: [www.AffinityRealEstate.com](http://www.AffinityRealEstate.com) | email: [info@affinityrealestate.com](mailto:info@affinityrealestate.com) | office: 218-237-3333 | fax: 218-237-3377



**\$19,500**  
 MLS 6691771 Land  
 Tbd\*\*\*\* Golf View Drive  
 Pine River MN 56474