



MLS 6692002 Commercial

**\$895,000**

200-208 6th Street  
Brainerd MN 56401

Status: Active

**Description:**

Don't miss out on the chance to own this commercial building featuring 6 fully leased units, along with a home situated just to the south, right along the bike trail. Enjoy the best of both worlds: city living out your front door with all the amenities the town has to offer, and wildlife right off your back deck overlooking the trail.

The home has partial drywall, a solid block foundation, and steel beam updates. Originally built by the first and only owners, this property has been meticulously cared for. The commercial space was thoughtfully designed, and the home was brought in to complement the business setting.

This well-maintained property is a rare find — ideal for investors or anyone seeking a mix of business and residential living.

**Additional Details:**

Year Built	1992
Lot Acres	0.63
Lot Dimensions	140x239x141x235
Garage Stalls	6
School District	181
Taxes	\$12,708
Taxes with Assessments	\$12,758
Tax Year	2024

**Additional Features:**

**Fuel:** Natural Gas **Garage:** 6 **Heat:** Forced Air **Sewer:** City Sewer/Connected **Water:** City Water/Connected **Air Conditioning:** Central Air

**Driving Directions:**

From Intersection of 210 & 371 Go East over the bridge on Washington St. to right on NW. 6th. ST. Property is located last building on your left.



Listed By:  
Edina Realty, Inc.

Affinity Real Estate Inc. participates in the Regional Multiple Listing Service of Minnesota, Inc Broker Reciprocity (sm) program, allowing us to display other broker's listings on our website. All properties are subject to prior sale, change or withdrawal.



**Call Affinity Real Estate**

**218-237-3333**

**info@affinityrealestate.com**



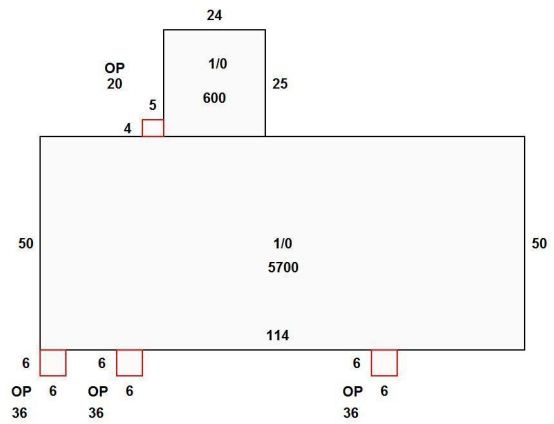
**Affinity Real Estate - 600 Park Avenue South - Park Rapids MN 56470**



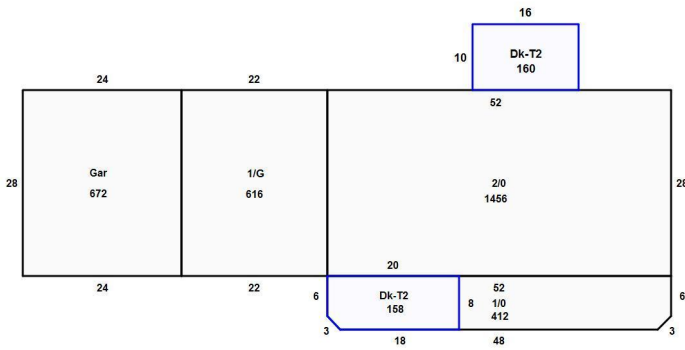
website: [www.AffinityRealEstate.com](http://www.AffinityRealEstate.com) | email: [info@affinityrealestate.com](mailto:info@affinityrealestate.com) | office: 218-237-3333 | fax:218-237-3377

**Affinity**  
REAL ESTATE INC

**\$895,000**  
MLS 6692002 Commercial  
200-208 6th Street  
Brainerd MN 56401



Sketch by Apex Sketch



Sketch by Apex Sketch

website: [www.AffinityRealEstate.com](http://www.AffinityRealEstate.com) | email: [info@affinityrealestate.com](mailto:info@affinityrealestate.com) | office: 218-237-3333 | fax: 218-237-3377



**\$895,000**  
 MLS 6692002 Commercial  
 200-208 6th Street  
 Brainerd MN 56401