



MLS 6692611 Residential

\$459,900

3,508 sq ft
3 bedrooms
3 baths

422 Ranch Circle
Bemidji MN 56601

Status: Active

Description:

Charming Ranch Home in the Carefree Living Community. Welcome to your dream retreat in the desirable "Ranches on Rako"! This stunning free-standing ranch home perfectly combines comfort and convenience, allowing you to enjoy lake life without outdoor maintenance worries. Spanning over 3,400 square feet, the main floor features a spacious primary suite with a walk-in closet and ensuite bath, along with a second bedroom, an office, and a laundry area. The finished lower level boasts a huge bedroom, an impressive woodworking shop, a soundproofed room, and ample storage, plus a bonus room for hobbies. Step outside to enjoy the privacy of a beautiful corner lot with a new stone patio, ideal for entertaining. Lush landscaping, supported by an underground sprinkler system, ensures easy upkeep. As a member of the Irvingboro Neighborhood Park & Rec, you'll have access to the sandy shores of Lake Irving beach and marina. This home isn't just a place to live; it's a lifestyle waiting for you. Schedule a showing today!

Additional Details:

Year Built	2006
Lot Acres	0.23
Lot Dimensions	50x70
Garage Stalls	2
School District	31
Taxes	\$5,362
Taxes with Assessments	\$5,362
Tax Year	2024

Additional Features:

Fuel: Electric, Natural Gas **Heat:** Baseboard, Forced Air

Driving Directions:

From downtown Bemidji take Bemidji Ave (MN 197) south to Washington Ave. Keep right on the Washington Ave split. Turn Right on Rako St SE. Take Rako to Ranch Circle SW. Turn right onto Ranch Circle SW. Home will be on your right.



Listed By:
Better Homes and Gardens Real Estate First Choice

Affinity Real Estate Inc. participates in the Regional Multiple Listing Service of Minnesota, Inc Broker Reciprocity (sm) program, allowing us to display other broker's listings on our website. All properties are subject to prior sale, change or withdrawal.



Call Affinity Real Estate

218-237-3333

info@affinityrealestate.com



Affinity Real Estate - 600 Park Avenue South - Park Rapids MN 56470



website: www.AffinityRealEstate.com | email: info@affinityrealestate.com | office: 218-237-3333 | fax:218-237-3377



\$459,900
MLS 6692611 Residential
422 Ranch Circle
Bemidji MN 56601



website: www.AffinityRealEstate.com | email: info@affinityrealestate.com | office: 218-237-3333 | fax: 218-237-3377

Affinity
REAL ESTATE INC

\$459,900
MLS 6692611 Residential
422 Ranch Circle
Bemidji MN 56601



website: www.AffinityRealEstate.com | email: info@affinityrealestate.com | office: 218-237-3333 | fax:218-237-3377

Affinity
REAL ESTATE INC

\$459,900
MLS 6692611 Residential
422 Ranch Circle
Bemidji MN 56601



website: www.AffinityRealEstate.com | email: info@affinityrealestate.com | office: 218-237-3333 | fax: 218-237-3377

Affinity
REAL ESTATE INC

\$459,900
MLS 6692611 Residential
422 Ranch Circle
Bemidji MN 56601



website: www.AffinityRealEstate.com | email: info@affinityrealestate.com | office: 218-237-3333 | fax: 218-237-3377

Affinity
REAL ESTATE INC

\$459,900
MLS 6692611 Residential
422 Ranch Circle
Bemidji MN 56601



website: www.AffinityRealEstate.com | email: info@affinityrealestate.com | office: 218-237-3333 | fax: 218-237-3377

Affinity
REAL ESTATE INC

\$459,900
MLS 6692611 Residential
422 Ranch Circle
Bemidji MN 56601



website: www.AffinityRealEstate.com | email: info@affinityrealestate.com | office: 218-237-3333 | fax:218-237-3377



\$459,900
MLS 6692611 Residential
422 Ranch Circle
Bemidji MN 56601



website: www.AffinityRealEstate.com | email: info@affinityrealestate.com | office: 218-237-3333 | fax:218-237-3377

Affinity
REAL ESTATE INC

\$459,900
MLS 6692611 Residential
422 Ranch Circle
Bemidji MN 56601



website: www.AffinityRealEstate.com | email: info@affinityrealestate.com | office: 218-237-3333 | fax:218-237-3377

Affinity
REAL ESTATE INC

\$459,900
MLS 6692611 Residential
422 Ranch Circle
Bemidji MN 56601



website: www.AffinityRealEstate.com | email: info@affinityrealestate.com | office: 218-237-3333 | fax:218-237-3377



\$459,900
MLS 6692611 Residential
422 Ranch Circle
Bemidji MN 56601



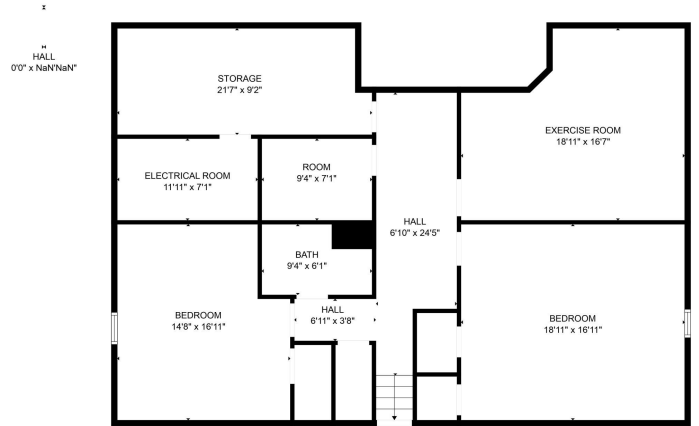
website: www.AffinityRealEstate.com | email: info@affinityrealestate.com | office: 218-237-3333 | fax:218-237-3377



\$459,900
MLS 6692611 Residential
422 Ranch Circle
Bemidji MN 56601



FLOOR PLAN CREATED BY CURBCASA APP. MEASUREMENTS DEEMED HIGHLY RELIABLE BUT NOT GUARANTEED.

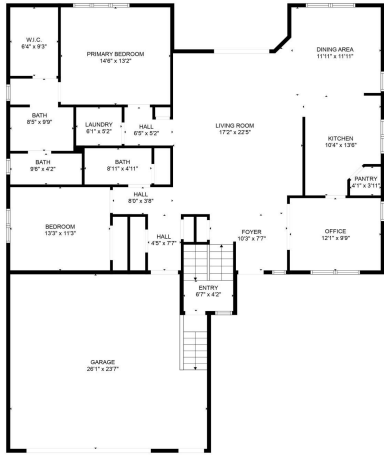


FLOOR PLAN CREATED BY CURBCASA APP. MEASUREMENTS DEEMED HIGHLY RELIABLE BUT NOT GUARANTEED.

website: www.AffinityRealEstate.com | email: info@affinityrealestate.com | office: 218-237-3333 | fax:218-237-3377



\$459,900
 MLS 6692611 Residential
 422 Ranch Circle
 Bemidji MN 56601



FLOOR PLAN CREATED BY CUBICASA API. MEASUREMENTS DEEMED HIGHLY RELIABLE BUT NOT GUARANTEED.



website: www.AffinityRealEstate.com | email: info@affinityrealestate.com | office: 218-237-3333 | fax:218-237-3377



\$459,900
 MLS 6692611 Residential
 422 Ranch Circle
 Bemidji MN 56601