



MLS 6692659 Residential

**\$689,000**

2,920 sq ft  
3 bedrooms  
3 baths

22800 Pearl Lake Road  
Detroit Lakes MN 56501

Status: Active

**Description:**

7 ACRES WITH LAKEVIEW AND ABUNDANT WILDLIFE. Bordered with trees and perched perfectly atop a gentle hill to take in the beautiful lakeview and refreshing lake breezes, sits this 4 bedroom, 3 bath home complete with walk-out family room, attached garage and a massive 40'x120' shop which offers a finished/heated workshop and office space (plumbed for bath). Comfortable, bright, open layout, main floor laundry & large yard--a great place to call home.

**Additional Details:**

Year Built	2000
Lot Acres	7.07
Lot Dimensions	Irr
Garage Stalls	2
School District	22
Taxes	\$1,786
Taxes with Assessments	\$1,786
Tax Year	2024

**Additional Features:**

**Basement:** Full, Concrete, Walkout **Fuel:** Electric, Propane **Garage:** 2 **Heat:** Dual, Hot Water, Other, Outdoor Boiler, Radiant **Sewer:** Private Sewer **Water:** Private, Well **Air Conditioning:** Central Air

**Driving Directions:**

From DL Hwy 59 S to CO Hwy 6, to West Lake Sallie Drive, Right at the T and follow North Pearl Lake Road to property. Look for signs.



Listed By:  
Re/Max Lakes Region

Affinity Real Estate Inc. participates in the Regional Multiple Listing Service of Minnesota, Inc Broker Reciprocity (sm) program, allowing us to display other broker's listings on our website. All properties are subject to prior sale, change or withdrawal.



**Call Affinity Real Estate**

**218-237-3333**

**info@affinityrealestate.com**



**Affinity Real Estate - 600 Park Avenue South - Park Rapids MN 56470**





website: [www.AffinityRealEstate.com](http://www.AffinityRealEstate.com) | email: [info@affinityrealestate.com](mailto:info@affinityrealestate.com) | office: 218-237-3333 | fax: 218-237-3377

**Affinity**  
REAL ESTATE INC

**\$689,000**  
MLS 6692659 Residential  
22800 Pearl Lake Road  
Detroit Lakes MN 56501



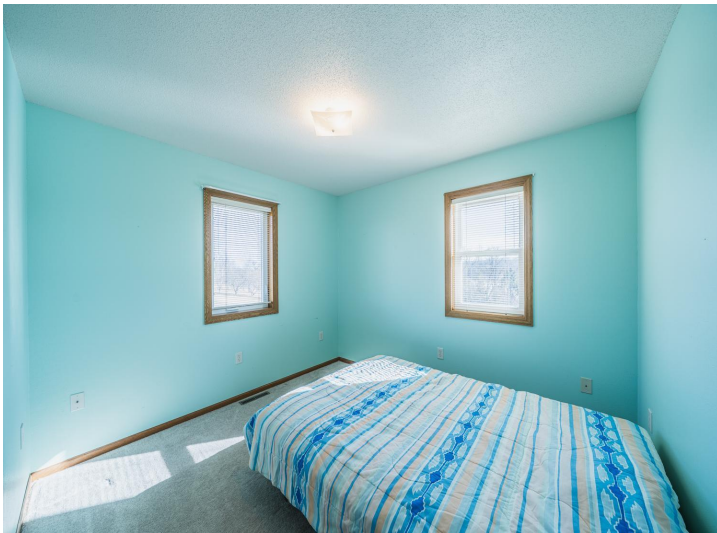


website: [www.AffinityRealEstate.com](http://www.AffinityRealEstate.com) | email: [info@affinityrealestate.com](mailto:info@affinityrealestate.com) | office: 218-237-3333 | fax: 218-237-3377

**Affinity**  
REAL ESTATE INC

**\$689,000**  
MLS 6692659 Residential  
22800 Pearl Lake Road  
Detroit Lakes MN 56501





website: [www.AffinityRealEstate.com](http://www.AffinityRealEstate.com) | email: [info@affinityrealestate.com](mailto:info@affinityrealestate.com) | office: 218-237-3333 | fax: 218-237-3377



**\$689,000**  
 MLS 6692659 Residential  
 22800 Pearl Lake Road  
 Detroit Lakes MN 56501





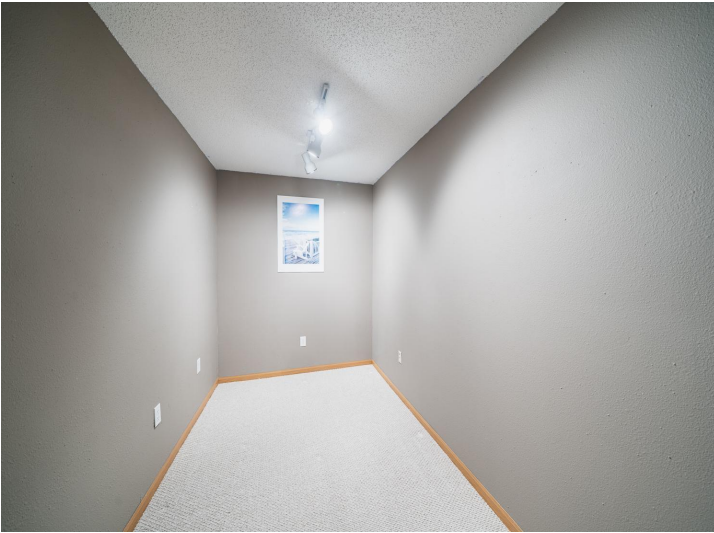
website: [www.AffinityRealEstate.com](http://www.AffinityRealEstate.com) | email: [info@affinityrealestate.com](mailto:info@affinityrealestate.com) | office: 218-237-3333 | fax: 218-237-3377



**\$689,000**

MLS 6692659 Residential  
22800 Pearl Lake Road  
Detroit Lakes MN 56501





website: [www.AffinityRealEstate.com](http://www.AffinityRealEstate.com) | email: [info@affinityrealestate.com](mailto:info@affinityrealestate.com) | office: 218-237-3333 | fax: 218-237-3377



**\$689,000**  
 MLS 6692659 Residential  
 22800 Pearl Lake Road  
 Detroit Lakes MN 56501





website: [www.AffinityRealEstate.com](http://www.AffinityRealEstate.com) | email: [info@affinityrealestate.com](mailto:info@affinityrealestate.com) | office: 218-237-3333 | fax: 218-237-3377



**\$689,000**  
 MLS 6692659 Residential  
 22800 Pearl Lake Road  
 Detroit Lakes MN 56501





website: [www.AffinityRealEstate.com](http://www.AffinityRealEstate.com) | email: [info@affinityrealestate.com](mailto:info@affinityrealestate.com) | office: 218-237-3333 | fax: 218-237-3377



**\$689,000**  
 MLS 6692659 Residential  
 22800 Pearl Lake Road  
 Detroit Lakes MN 56501





website: [www.AffinityRealEstate.com](http://www.AffinityRealEstate.com) | email: [info@affinityrealestate.com](mailto:info@affinityrealestate.com) | office: 218-237-3333 | fax: 218-237-3377



**\$689,000**  
 MLS 6692659 Residential  
 22800 Pearl Lake Road  
 Detroit Lakes MN 56501