



MLS 6692931 Lake Home

**\$1,100,000**

3,308 sq ft  
3 bedrooms  
3 baths

18575 Power Dam Road  
Bemidji MN 56601

Waterfront: Big

Status: Active

#### Description:

This Big Lake retreat is the complete package when it comes to lake living! Starting with its 2.7 acre lot with 300 ft of hard sand beachfront that sits only 60 ft from the dreamy 3+BR/3BA custom home with attached in-law apartment. Open floor plan with vaulted ceilings, family room with fireplace, large lakeside facing kitchen/dining area, along with a lakeside primary bedroom with views that dreams are made of! The 32x52 outbuilding is the answer for extra guests & hobbies. It features 2 additional guest rooms and a 26x32 heated dream shop with an additional 26x32 storage for all the lake toys. To top off the list this baby comes with solar panels for additional electric savings. As you can tell there are too many extras to mention here you have to make an appointment to see the rest of this beautiful lake property and hopefully you will be lucky enough to call it your home someday soon!

#### Additional Details:

Year Built	1998
Lot Acres	2.7
Lot Dimensions	310x370
Garage Stalls	3
School District	31
Taxes	\$5,392
Taxes with Assessments	\$5,392
Tax Year	2024

#### Additional Features:

**Basement:** None **Fuel:** Electric, Propane **Garage:** 3 **Heat:** Dual, Forced Air, Fireplace(s) **Sewer:** Mound Septic, Private Sewer **Water:** Submersible - 4 Inch, Drilled, Private, Well **Air Conditioning:** Central Air

#### Driving Directions:

East on Power Dam Rd, follow to property on left (no sign will be on the road) Fire #18575.



Listed By:  
Century 21 Dickinson

Affinity Real Estate Inc. participates in the Regional Multiple Listing Service of Minnesota, Inc Broker Reciprocity (sm) program, allowing us to display other broker's listings on our website. All properties are subject to prior sale, change or withdrawal.



Call Affinity Real Estate

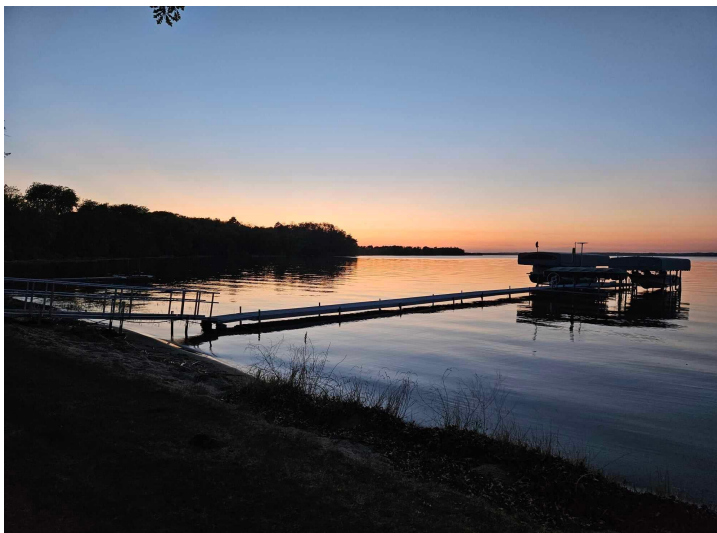
**218-237-3333**

[info@affinityrealestate.com](mailto:info@affinityrealestate.com)



Affinity Real Estate - 600 Park Avenue South - Park Rapids MN 56470





**300+ft. Level Sandy Beach  
Front.**



website: [www.AffinityRealEstate.com](http://www.AffinityRealEstate.com) | email: [info@affinityrealestate.com](mailto:info@affinityrealestate.com) | office: 218-237-3333 | fax: 218-237-3377

**Affinity**  
REAL ESTATE INC

**\$1,100,000**

MLS 6692931 Lake Home  
18575 Power Dam Road  
Bemidji MN 56601





website: [www.AffinityRealEstate.com](http://www.AffinityRealEstate.com) | email: [info@affinityrealestate.com](mailto:info@affinityrealestate.com) | office: 218-237-3333 | fax: 218-237-3377

**Affinity**  
REAL ESTATE INC

**\$1,100,000**  
MLS 6692931 Lake Home  
18575 Power Dam Road  
Bemidji MN 56601



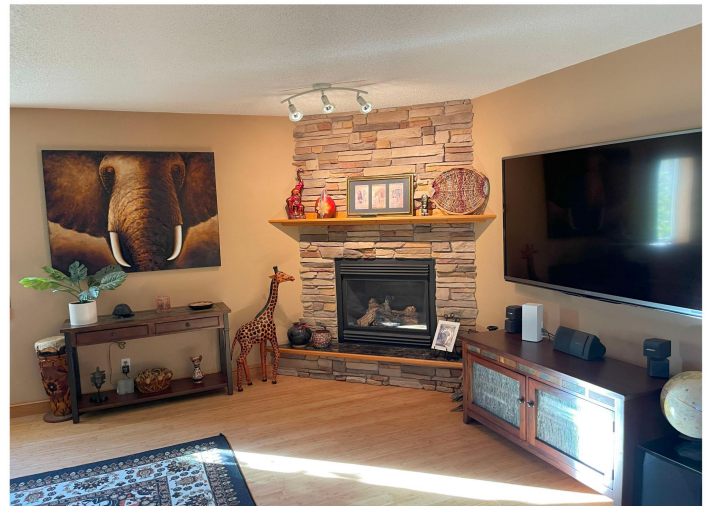


website: [www.AffinityRealEstate.com](http://www.AffinityRealEstate.com) | email: [info@affinityrealestate.com](mailto:info@affinityrealestate.com) | office: 218-237-3333 | fax: 218-237-3377

**Affinity**  
REAL ESTATE INC

**\$1,100,000**  
MLS 6692931 Lake Home  
18575 Power Dam Road  
Bemidji MN 56601





website: [www.AffinityRealEstate.com](http://www.AffinityRealEstate.com) | email: [info@affinityrealestate.com](mailto:info@affinityrealestate.com) | office: 218-237-3333 | fax: 218-237-3377

**Affinity**  
REAL ESTATE INC

**\$1,100,000**  
MLS 6692931 Lake Home  
18575 Power Dam Road  
Bemidji MN 56601





website: [www.AffinityRealEstate.com](http://www.AffinityRealEstate.com) | email: [info@affinityrealestate.com](mailto:info@affinityrealestate.com) | office: 218-237-3333 | fax: 218-237-3377

**Affinity**  
REAL ESTATE INC

**\$1,100,000**

MLS 6692931 Lake Home  
18575 Power Dam Road  
Bemidji MN 56601





website: [www.AffinityRealEstate.com](http://www.AffinityRealEstate.com) | email: [info@affinityrealestate.com](mailto:info@affinityrealestate.com) | office: 218-237-3333 | fax: 218-237-3377

**Affinity**  
REAL ESTATE INC

**\$1,100,000**  
MLS 6692931 Lake Home  
18575 Power Dam Road  
Bemidji MN 56601





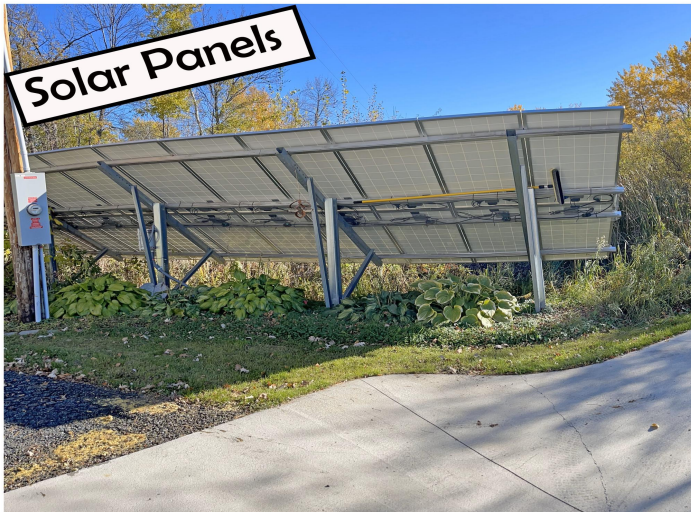
website: [www.AffinityRealEstate.com](http://www.AffinityRealEstate.com) | email: [info@affinityrealestate.com](mailto:info@affinityrealestate.com) | office: 218-237-3333 | fax: 218-237-3377

**Affinity**  
REAL ESTATE INC

**\$1,100,000**

MLS 6692931 Lake Home  
18575 Power Dam Road  
Bemidji MN 56601





website: [www.AffinityRealEstate.com](http://www.AffinityRealEstate.com) | email: [info@affinityrealestate.com](mailto:info@affinityrealestate.com) | office: 218-237-3333 | fax: 218-237-3377

**Affinity**  
REAL ESTATE INC

**\$1,100,000**  
MLS 6692931 Lake Home  
18575 Power Dam Road  
Bemidji MN 56601





website: [www.AffinityRealEstate.com](http://www.AffinityRealEstate.com) | email: [info@affinityrealestate.com](mailto:info@affinityrealestate.com) | office: 218-237-3333 | fax: 218-237-3377



**\$1,100,000**

MLS 6692931 Lake Home  
18575 Power Dam Road  
Bemidji MN 56601