



MLS 6693445 Lake Home

**\$294,900**

660 sq ft  
2 bedrooms  
1 baths

3883 Wahtomin Trail  
Alexandria MN 56308

Waterfront: Ida

Status: Active

**Description:**

Sometimes its all about SIMPLICITY! Here it is! All you need to do is pack your bags and head to the lake. This 2BR, 1BA has been updated throughout and will definitely meet those things on your wish list for simple lake enjoyment including very little maintenance. Take in the beautiful Lake Ida views as your enjoying your morning coffee or afternoon beverage sitting in your 3 season porch. Enjoy the spacious grounds for all the yard games, convenient location to the in-ground heated swimming pool, and so much more. Spend your day soaking up the sun on the water while the association takes care of the grounds. There is over 800 Sq Ft with the 3 season porch included. Timing is perfect for this one to hit the market, buy now and you can enjoy this 2024 Lake Season! It will be that 2nd home that you can just show up and ENJOY!

**Additional Details:**

|                        |             |
|------------------------|-------------|
| Year Built             | 1988        |
| Lot Acres              | 0.03        |
| Lot Dimensions         | 27x50x27x50 |
| School District        | 206         |
| Taxes                  | \$1,442     |
| Taxes with Assessments | \$1,442     |
| Tax Year               | 2023        |

**Additional Features:**

**Fuel:** Electric **Heat:** Baseboard

**Driving Directions:**

W on Co Rd 82 to Co Rd 22, take right and follow to Co Rd 6, take right and go approx. 2.5 miles to Foxy Lane, take a right and then right onto Wahtomin and left to enter the association, follow to sign on right.



Listed By:  
Central MN Realty LLC

Affinity Real Estate Inc. participates in the Regional Multiple Listing Service of Minnesota, Inc Broker Reciprocity (sm) program, allowing us to display other broker's listings on our website. All properties are subject to prior sale, change or withdrawal.



**Call Affinity Real Estate**

**218-237-3333**

**info@affinityrealestate.com**



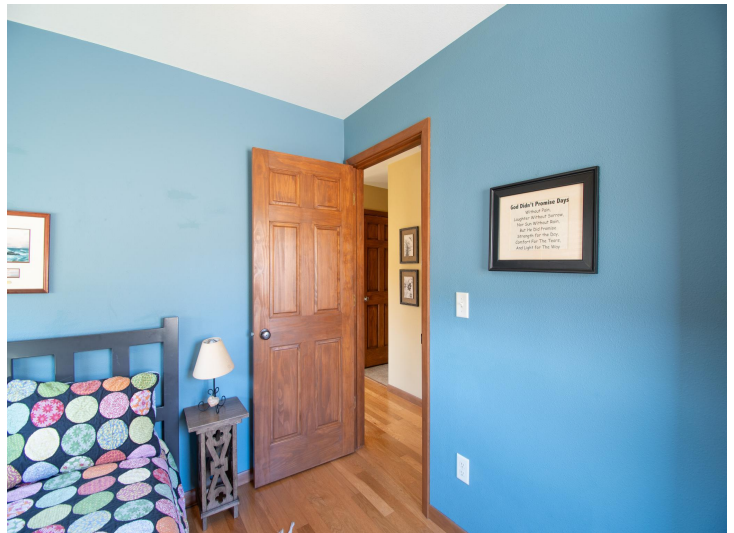
**Affinity Real Estate - 600 Park Avenue South - Park Rapids MN 56470**



website: [www.AffinityRealEstate.com](http://www.AffinityRealEstate.com) | email: [info@affinityrealestate.com](mailto:info@affinityrealestate.com) | office: 218-237-3333 | fax:218-237-3377



**\$294,900**  
MLS 6693445 Lake Home  
3883 Wahtomin Trail  
Alexandria MN 56308



website: [www.AffinityRealEstate.com](http://www.AffinityRealEstate.com) | email: [info@affinityrealestate.com](mailto:info@affinityrealestate.com) | office: 218-237-3333 | fax: 218-237-3377

**Affinity**  
REAL ESTATE INC

**\$294,900**  
MLS 6693445 Lake Home  
3883 Wahtomin Trail  
Alexandria MN 56308



website: [www.AffinityRealEstate.com](http://www.AffinityRealEstate.com) | email: [info@affinityrealestate.com](mailto:info@affinityrealestate.com) | office: 218-237-3333 | fax: 218-237-3377

**Affinity**  
REAL ESTATE INC

**\$294,900**  
MLS 6693445 Lake Home  
3883 Wahtomin Trail  
Alexandria MN 56308



website: [www.AffinityRealEstate.com](http://www.AffinityRealEstate.com) | email: [info@affinityrealestate.com](mailto:info@affinityrealestate.com) | office: 218-237-3333 | fax:218-237-3377

**Affinity**  
REAL ESTATE INC

**\$294,900**  
MLS 6693445 Lake Home  
3883 Wahtomin Trail  
Alexandria MN 56308



website: [www.AffinityRealEstate.com](http://www.AffinityRealEstate.com) | email: [info@affinityrealestate.com](mailto:info@affinityrealestate.com) | office: 218-237-3333 | fax:218-237-3377



**\$294,900**  
MLS 6693445 Lake Home  
3883 Wahtomin Trail  
Alexandria MN 56308



website: [www.AffinityRealEstate.com](http://www.AffinityRealEstate.com) | email: [info@affinityrealestate.com](mailto:info@affinityrealestate.com) | office: 218-237-3333 | fax:218-237-3377



**\$294,900**  
MLS 6693445 Lake Home  
3883 Wahtomin Trail  
Alexandria MN 56308



website: [www.AffinityRealEstate.com](http://www.AffinityRealEstate.com) | email: [info@affinityrealestate.com](mailto:info@affinityrealestate.com) | office: 218-237-3333 | fax:218-237-3377



**\$294,900**  
MLS 6693445 Lake Home  
3883 Wahtomin Trail  
Alexandria MN 56308





website: [www.AffinityRealEstate.com](http://www.AffinityRealEstate.com) | email: [info@affinityrealestate.com](mailto:info@affinityrealestate.com) | office: 218-237-3333 | fax:218-237-3377

**Affinity**  
REAL ESTATE INC

**\$294,900**  
MLS 6693445 Lake Home  
3883 Wahtomin Trail  
Alexandria MN 56308