



MLS 6693517 Lake Home

\$1,450,000

2,560 sq ft
3 bedrooms
3 baths

34929 Blueberry Bay Road
Pequot Lakes MN 56472

Waterfront: Bertha

Status: Active

Description:

Newer construction, west facing spectacular lake home on the highly desired Bertha Lake on the Whitefish Chain. One level living with 3 bedrooms, 3 bathrooms, and a 3-stall heated garage. Breathtaking water views as you open the front door entering the home, spacious great room with an open concept great for entertaining and family gatherings. Custom cabinetry throughout with warm tones, cozy fireplace in the living room, an abundance of storage, a center kitchen island and pantry. Lakeside primary ensuite with custom tiled shower, double sinks, and large walk-in closet. The lakeside sunroom will quickly become your favorite room to relax at the end of the day, unless of course you choose the lakeside patio to watch the sunset! This property has a private dock and also an option for another in the neighborhood association common area a quick golf cart ride away! This is worth your time to tour! 2021 built you will inherit the new construction warranties and have nothing to worry about for years to come!

Additional Details:

Year Built	2021
Lot Acres	0.7
Lot Dimensions	107x310x157x205
Garage Stalls	3
School District	186
Taxes	\$3,738
Taxes with Assessments	\$3,738
Tax Year	2024

Additional Features:

Basement: Slab **Fuel:** Natural Gas **Garage:** 3 **Heat:** Ductless Mini-Split, Fireplace(s), Radiant Floor **Sewer:** Private Sewer, Septic System Compliant - Yes, Tank with Drainage Field **Water:** Drilled, Private, Well **Air Conditioning:** Ductless Mini-Split

Driving Directions:

From State Highway 371 and County Road 16 north of Pequot Lakes go East on County Road 16 to left on Blueberry Bay Road to the sign and #34929



Listed By:
Northland Sotheby's International Realty

Affinity Real Estate Inc. participates in the Regional Multiple Listing Service of Minnesota, Inc Broker Reciprocity (sm) program, allowing us to display other broker's listings on our website. All properties are subject to prior sale, change or withdrawal.



Call Affinity Real Estate

218-237-3333

info@affinityrealestate.com



Affinity Real Estate - 600 Park Avenue South - Park Rapids MN 56470



website: www.AffinityRealEstate.com | email: info@affinityrealestate.com | office: 218-237-3333 | fax:218-237-3377



\$1,450,000
MLS 6693517 Lake Home
34929 Blueberry Bay Road
Pequot Lakes MN 56472



website: www.AffinityRealEstate.com | email: info@affinityrealestate.com | office: 218-237-3333 | fax:218-237-3377

Affinity
REAL ESTATE INC

\$1,450,000
MLS 6693517 Lake Home
34929 Blueberry Bay Road
Pequot Lakes MN 56472



website: www.AffinityRealEstate.com | email: info@affinityrealestate.com | office: 218-237-3333 | fax: 218-237-3377

Affinity
REAL ESTATE INC

\$1,450,000
MLS 6693517 Lake Home
34929 Blueberry Bay Road
Pequot Lakes MN 56472



website: www.AffinityRealEstate.com | email: info@affinityrealestate.com | office: 218-237-3333 | fax:218-237-3377

Affinity
REAL ESTATE INC

\$1,450,000
MLS 6693517 Lake Home
34929 Blueberry Bay Road
Pequot Lakes MN 56472



website: www.AffinityRealEstate.com | email: info@affinityrealestate.com | office: 218-237-3333 | fax:218-237-3377

Affinity
REAL ESTATE INC

\$1,450,000
MLS 6693517 Lake Home
34929 Blueberry Bay Road
Pequot Lakes MN 56472



website: www.AffinityRealEstate.com | email: info@affinityrealestate.com | office: 218-237-3333 | fax: 218-237-3377

Affinity
REAL ESTATE INC

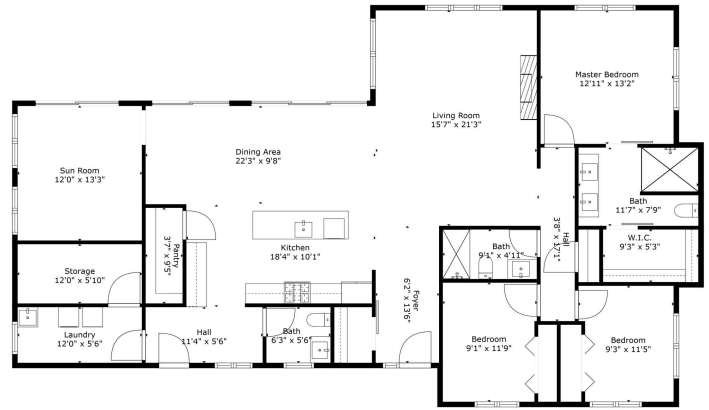
\$1,450,000
MLS 6693517 Lake Home
34929 Blueberry Bay Road
Pequot Lakes MN 56472



website: www.AffinityRealEstate.com | email: info@affinityrealestate.com | office: 218-237-3333 | fax:218-237-3377



\$1,450,000
MLS 6693517 Lake Home
34929 Blueberry Bay Road
Pequot Lakes MN 56472



TOTAL: 1926 sq. ft.
 FLOOR 1: 1926 sq. ft.
 EXCLUDED AREAS: STORAGE: 71 sq. ft.
 Floor Plan Created By: Caliber App. Measurements Deemed Highly Reliable But Not Guaranteed.



[website: www.AffinityRealEstate.com](http://www.AffinityRealEstate.com) | [email: info@affinityrealestate.com](mailto:info@affinityrealestate.com) | office: 218-237-3333 | fax:218-237-3377



\$1,450,000
 MLS 6693517 Lake Home
 34929 Blueberry Bay Road
 Pequot Lakes MN 56472