



MLS 6693535 Residential

\$350,000

1,935 sq ft
3 bedrooms
2 baths

16137 Ahrens Hill Road
Brainerd MN 56401

Status: Active

Description:

Wonderful, quiet neighborhood on the outskirts of town. 3-bedroom 2 bath remodeled home with a new kitchen; quartz counters, tiled backsplash, added custom storage. The main floor bathroom was also renovated with granite, tiled flooring, new ceiling and insulation. The wrap around deck was recently stained and is the perfect place to sit to enjoy the peacefulness of the location.

The home boasts two main floor bedrooms, and an additional bedroom in the walkout lower level, and expansive family room. Beautiful landscaping, privacy, convenience, and an absolutely charming home - this is the perfect property to enjoy your morning coffee listening to the birds chirping from the deck!

Additional Details:

Year Built	1988
Lot Acres	0.77
Lot Dimensions	249x190xirr
Garage Stalls	2
School District	181
Taxes	\$1,368
Taxes with Assessments	\$1,368
Tax Year	2024

Additional Features:

Basement: Block, Daylight/Lookout Windows, Egress Window(s), Finished, Full, Storage Space, Walkout **Fuel:** Natural Gas **Garage:** 2 **Heat:** Forced Air **Sewer:** Private Sewer, Tank with Drainage Field **Water:** Private, Well **Air Conditioning:** Central Air

Driving Directions:

Follow Riverside Drive turn right onto Ahrens Hills, home on left #16137 and sign



Listed By:
Northland Sotheby's International Realty

Affinity Real Estate Inc. participates in the Regional Multiple Listing Service of Minnesota, Inc Broker Reciprocity (sm) program, allowing us to display other broker's listings on our website. All properties are subject to prior sale, change or withdrawal.



Call Affinity Real Estate

218-237-3333

info@affinityrealestate.com



Affinity Real Estate - 600 Park Avenue South - Park Rapids MN 56470



website: www.AffinityRealEstate.com | email: info@affinityrealestate.com | office: 218-237-3333 | fax: 218-237-3377



\$350,000
 MLS 6693535 Residential
 16137 Ahrens Hill Road
 Brainerd MN 56401



website: www.AffinityRealEstate.com | email: info@affinityrealestate.com | office: 218-237-3333 | fax: 218-237-3377



\$350,000
 MLS 6693535 Residential
 16137 Ahrens Hill Road
 Brainerd MN 56401



website: www.AffinityRealEstate.com | email: info@affinityrealestate.com | office: 218-237-3333 | fax: 218-237-3377

Affinity
REAL ESTATE INC

\$350,000
MLS 6693535 Residential
16137 Ahrens Hill Road
Brainerd MN 56401



website: www.AffinityRealEstate.com | email: info@affinityrealestate.com | office: 218-237-3333 | fax: 218-237-3377

Affinity
REAL ESTATE INC

\$350,000
MLS 6693535 Residential
16137 Ahrens Hill Road
Brainerd MN 56401

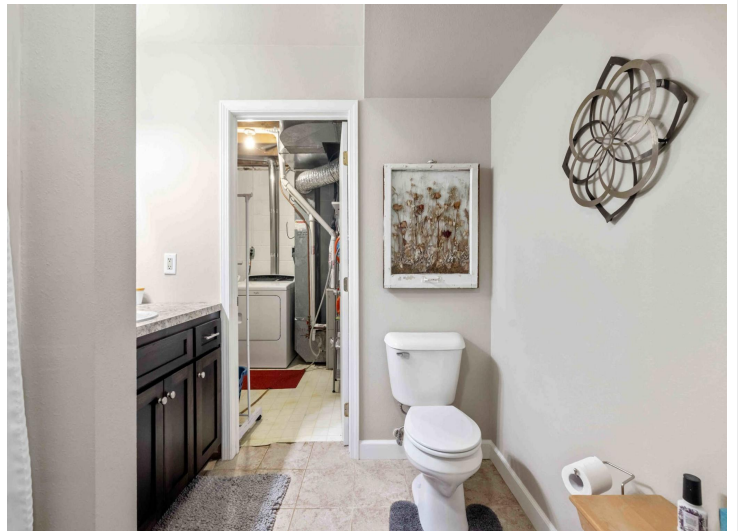


website: www.AffinityRealEstate.com | email: info@affinityrealestate.com | office: 218-237-3333 | fax: 218-237-3377

Affinity
REAL ESTATE INC

\$350,000

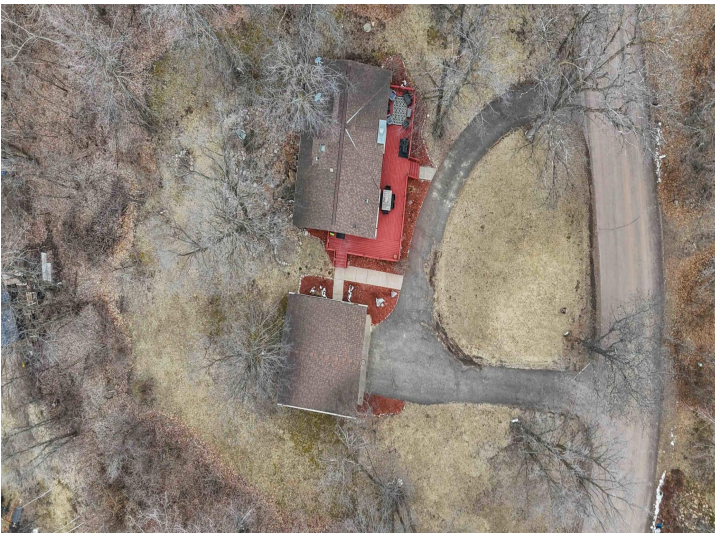
MLS 6693535 Residential
16137 Ahrens Hill Road
Brainerd MN 56401



website: www.AffinityRealEstate.com | email: info@affinityrealestate.com | office: 218-237-3333 | fax: 218-237-3377

Affinity
REAL ESTATE INC

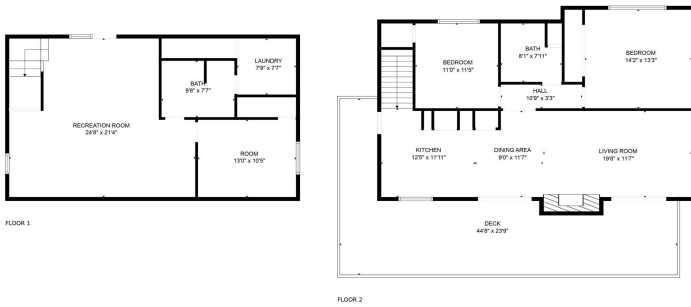
\$350,000
MLS 6693535 Residential
16137 Ahrens Hill Road
Brainerd MN 56401



website: www.AffinityRealEstate.com | email: info@affinityrealestate.com | office: 218-237-3333 | fax: 218-237-3377



\$350,000
 MLS 6693535 Residential
 16137 Ahrens Hill Road
 Brainerd MN 56401



ESTIMATED AREAS
 GLA FLOOR 1: 871 sq. ft. EXCLUDED AREAS 0 sq. ft.
 GLA FLOOR 2: 1060 sq. ft. EXCLUDED AREAS 513 sq. ft.
 TOTAL GLA 1931 sq. ft. TOTAL AREA 2444 sq. ft.

FLOOR PLAN CREATED BY COMPARA APP. MEASUREMENTS VARYING SLIGHTLY BUT NOT GUARANTEED.

website: www.AffinityRealEstate.com | email: info@affinityrealestate.com | office: 218-237-3333 | fax: 218-237-3377



\$350,000
 MLS 6693535 Residential
 16137 Ahrens Hill Road
 Brainerd MN 56401