



MLS 6693566 Residential

\$449,900

2,164 sq ft
3 bedrooms
3 baths

93 County 49
Pine River MN 56474

Status: Active

Description:

3 bedroom 3 bath two story one owner home on 50 acres with a total of 100 acres available. This setting is peaceful, full of wildlife, and a wonderful escape from the hustle and bustle. Cedar siding, new carpeting, new main floor bathroom with laundry hookups, all 3 bedrooms on the upper level, 3 separate living room areas, formal dining room, custom built-ins around the wood burning fireplace, and tons of storage!

This would be an excellent location and property if you are looking to make a true homestead property...growing gardens, hunting, etc. Attached 29x24 garage, detached 16x26 garage and 30x20 workshop~ There is an option to purchase an additional 50 acres across the road for \$249,900 Check it out today!

Additional Details:

Year Built	1990
Lot Acres	50
Lot Dimensions	1665x1319
Garage Stalls	5
School District	2174
Taxes	\$1,440
Taxes with Assessments	\$1,506
Tax Year	2024

Additional Features:

Basement: Block, Drainage System, Finished, Storage Space **Fuel:** Propane, Wood **Garage:** 5 **Heat:** Forced Air, Fireplace(s) **Sewer:** Private Sewer **Water:** Private, Well **Air Conditioning:** Central Air

Driving Directions:

From Pine River - North on 84. Turn right on County 49 NW. Continue on 49 to sign and 93 on the right



Listed By:
Northland Sotheby's International Realty

Affinity Real Estate Inc. participates in the Regional Multiple Listing Service of Minnesota, Inc Broker Reciprocity (sm) program, allowing us to display other broker's listings on our website. All properties are subject to prior sale, change or withdrawal.



Call Affinity Real Estate

218-237-3333

info@affinityrealestate.com



Affinity Real Estate - 600 Park Avenue South - Park Rapids MN 56470



website: www.AffinityRealEstate.com | email: info@affinityrealestate.com | office: 218-237-3333 | fax: 218-237-3377



\$449,900
 MLS 6693566 Residential
 93 County 49
 Pine River MN 56474



website: www.AffinityRealEstate.com | email: info@affinityrealestate.com | office: 218-237-3333 | fax: 218-237-3377

Affinity
REAL ESTATE INC

\$449,900
MLS 6693566 Residential
93 County 49
Pine River MN 56474



website: www.AffinityRealEstate.com | email: info@affinityrealestate.com | office: 218-237-3333 | fax: 218-237-3377



\$449,900
MLS 6693566 Residential
93 County 49
Pine River MN 56474



website: www.AffinityRealEstate.com | email: info@affinityrealestate.com | office: 218-237-3333 | fax: 218-237-3377



\$449,900
 MLS 6693566 Residential
 93 County 49
 Pine River MN 56474



website: www.AffinityRealEstate.com | email: info@affinityrealestate.com | office: 218-237-3333 | fax: 218-237-3377



\$449,900
 MLS 6693566 Residential
 93 County 49
 Pine River MN 56474



website: www.AffinityRealEstate.com | email: info@affinityrealestate.com | office: 218-237-3333 | fax: 218-237-3377



\$449,900
 MLS 6693566 Residential
 93 County 49
 Pine River MN 56474



website: www.AffinityRealEstate.com | email: info@affinityrealestate.com | office: 218-237-3333 | fax: 218-237-3377



\$449,900
MLS 6693566 Residential
93 County 49
Pine River MN 56474



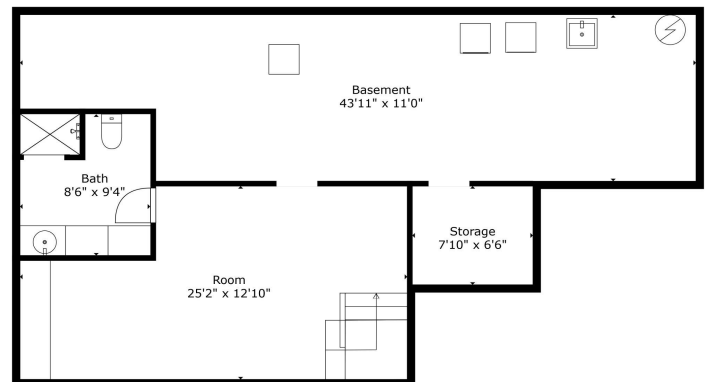
Floor 2



Floor 3



Floor 1



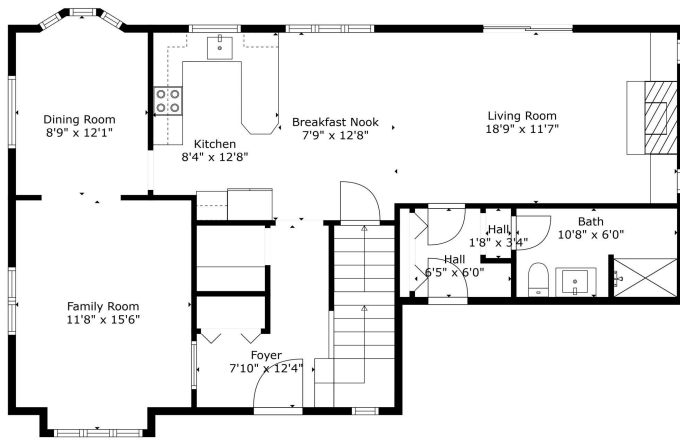
TOTAL: 3042 sq. ft.
 BELOW GROUND: 375 sq. ft., FLOOR 2: 987 sq. ft., FLOOR 3: 680 sq. ft.
 EXCLUDED AREAS: STORAGE: 54 sq. ft., BASEMENT: 442 sq. ft.
 Floor Plan Created By: CubicStar App. Measurements Deemed Highly Reliable But Not Guaranteed.

TOTAL: 3042 sq. ft.
 BELOW GROUND: 375 sq. ft., FLOOR 2: 987 sq. ft., FLOOR 3: 680 sq. ft.
 EXCLUDED AREAS: STORAGE: 54 sq. ft., BASEMENT: 442 sq. ft.
 Floor Plan Created By: CubicStar App. Measurements Deemed Highly Reliable But Not Guaranteed.

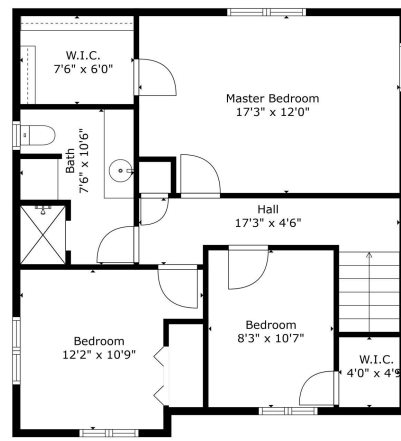
website: www.AffinityRealEstate.com | email: info@affinityrealestate.com | office: 218-237-3333 | fax: 218-237-3377



\$449,900
 MLS 6693566 Residential
 93 County 49
 Pine River MN 56474



TOTAL: 3043 sq. ft.
 BELOW GROUND: 375 sq. ft. FLOOR 2: 987 sq. ft. FLOOR 3: 680 sq. ft.
 EXCLUDED AREAS: STORAGE: 54 sq. ft. BASEMENT: 442 sq. ft.
 Floor Plan Created By: Cubicooler App. Measurements Deemed Highly Reliable But Not Guaranteed.



TOTAL: 3043 sq. ft.
 BELOW GROUND: 375 sq. ft. FLOOR 2: 987 sq. ft. FLOOR 3: 680 sq. ft.
 EXCLUDED AREAS: STORAGE: 54 sq. ft. BASEMENT: 442 sq. ft.
 Floor Plan Created By: Cubicooler App. Measurements Deemed Highly Reliable But Not Guaranteed.

website: www.AffinityRealEstate.com | email: info@affinityrealestate.com | office: 218-237-3333 | fax: 218-237-3377



\$449,900
 MLS 6693566 Residential
 93 County 49
 Pine River MN 56474