



MLS 6693572 Lake Land

\$149,000

Description:

Welcome to WOODSHIRE on CLARK LAKE! The Woodshire development is one of the newest and finest lakeshore developments in the Nisswa area. Lot 3 is over 1.2 acres with 194' of lakefrontage, gentle elevation, undeveloped shoreline, and beautiful trees. Perrin Point is a private, blacktopped Cul-da sac road with no outlet, providing unique privacy and security. Located in the heart of the Nisswa Lakes Area, across the street from the Paul Bunyan Trail and just down the shoreline from the new Catalyst event center.

Additional Details:

Lot Acres	1.24
Lot Dimensions	194 x 332 x 152 x 483
School District	181
Taxes	\$100
Taxes with Assessments	\$100
Tax Year	2024

Additional Features:

Driving Directions:

From the Intersection of Hwy 371 and County Rd. 13 (Sportland Corner), go east of 13 to, left on Clark Lake Dam Rd., to Rt. on Perrin Point (no road sign installed, follow real estate signage) to sign on lot 3.



Listed By:
Kurilla Real Estate LTD

Affinity Real Estate Inc. participates in the Regional Multiple Listing Service of Minnesota, Inc Broker Reciprocity (sm) program, allowing us to display other broker's listings on our website. All properties are subject to prior sale, change or withdrawal.



Call Affinity Real Estate

218-237-3333

info@affinityrealestate.com



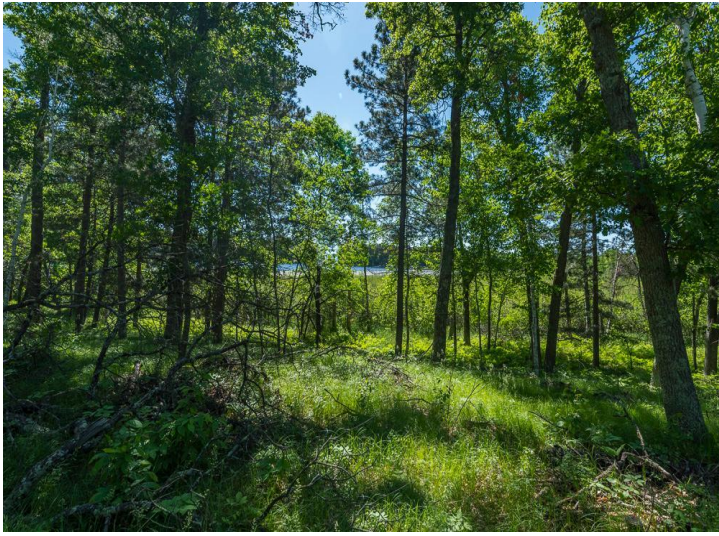
Affinity Real Estate - 600 Park Avenue South - Park Rapids MN 56470



website: www.AffinityRealEstate.com | email: info@affinityrealestate.com | office: 218-237-3333 | fax:218-237-3377



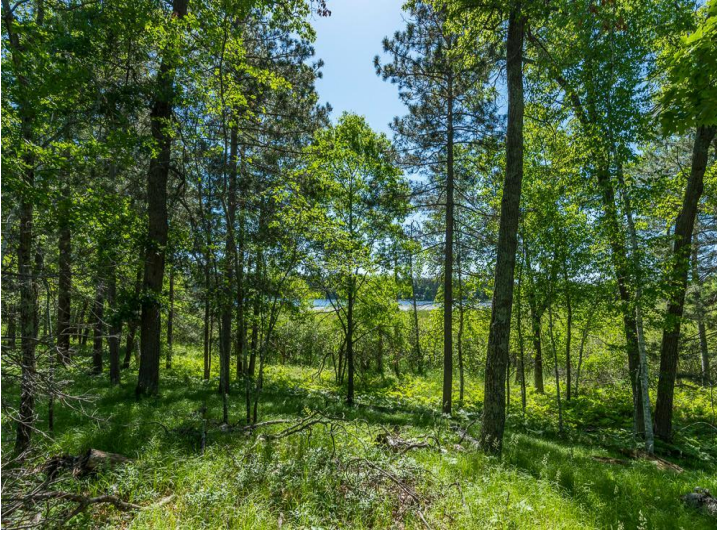
\$149,000
MLS 6693572 Lake Land
24456 Perrin Pt.
Nisswa MN 56468



website: www.AffinityRealEstate.com | email: info@affinityrealestate.com | office: 218-237-3333 | fax:218-237-3377



\$149,000
MLS 6693572 Lake Land
24456 Perrin Pt.
Nisswa MN 56468



website: www.AffinityRealEstate.com | email: info@affinityrealestate.com | office: 218-237-3333 | fax:218-237-3377



\$149,000
MLS 6693572 Lake Land
24456 Perrin Pt.
Nisswa MN 56468



website: www.AffinityRealEstate.com | email: info@affinityrealestate.com | office: 218-237-3333 | fax:218-237-3377



\$149,000
MLS 6693572 Lake Land
24456 Perrin Pt.
Nisswa MN 56468