



MLS 6693632 Residential

\$259,900

1,440 sq ft
2 bedrooms
2 baths

14706 Par Drive
Baxter MN 56425

Status: Active

Description:

Maintenance-free living awaits in this Beautiful 2 bedroom, 2 Bath home in Country Club Estates. Nice large walk-in closet. Open floor plan with natural light throughout. One level living with a 2-car garage. Spacious country style kitchen. Very close to all Baxter amenities. Well maintained by association.

Additional Details:

Year Built	1995
Lot Acres	0.08
Lot Dimensions	50x72
Garage Stalls	2
School District	181
Taxes	\$2,430
Taxes with Assessments	\$2,430
Tax Year	2025

Additional Features:

Basement: None **Fuel:** Natural Gas **Garage:** 2 **Heat:** Forced Air **Sewer:** City Sewer/Connected **Water:** City Water/Connected **Air Conditioning:** Central Air

Driving Directions:

Heading north on 371, turn right on Clearwater Road, left on Golf Course Drive, right on Par Drive. First immediate left. On right hand side.



Listed By:
LPT Realty, LLC

Affinity Real Estate Inc. participates in the Regional Multiple Listing Service of Minnesota, Inc Broker Reciprocity (sm) program, allowing us to display other broker's listings on our website. All properties are subject to prior sale, change or withdrawal.



Call Affinity Real Estate

218-237-3333

info@affinityrealestate.com



Affinity Real Estate - 600 Park Avenue South - Park Rapids MN 56470



website: www.AffinityRealEstate.com | email: info@affinityrealestate.com | office: 218-237-3333 | fax: 218-237-3377



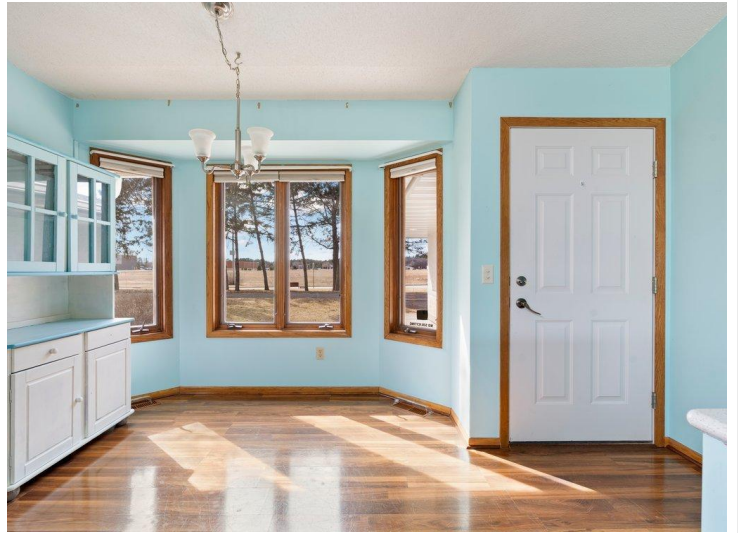
\$259,900
 MLS 6693632 Residential
 14706 Par Drive
 Baxter MN 56425



website: www.AffinityRealEstate.com | email: info@affinityrealestate.com | office: 218-237-3333 | fax: 218-237-3377

Affinity
REAL ESTATE INC

\$259,900
MLS 6693632 Residential
14706 Par Drive
Baxter MN 56425



website: www.AffinityRealEstate.com | email: info@affinityrealestate.com | office: 218-237-3333 | fax: 218-237-3377



\$259,900
MLS 6693632 Residential
14706 Par Drive
Baxter MN 56425