



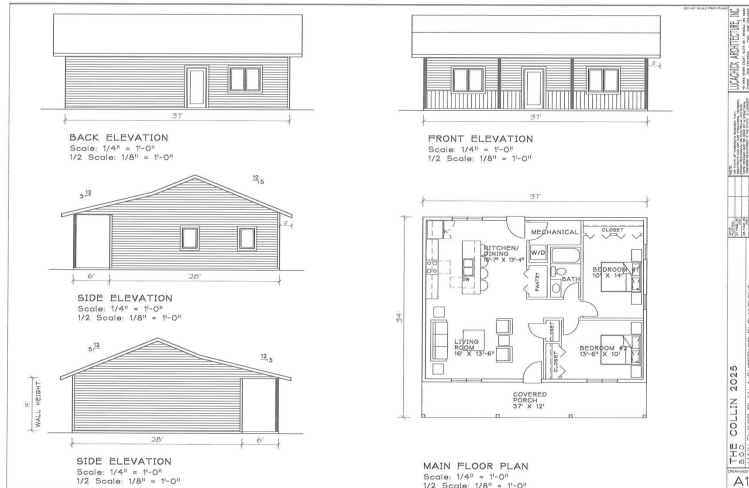
MLS 6693641 Residential

\$219,900

1,036 sq ft
2 bedrooms
1 baths

1933 Edgewood Drive
Bemidji MN 56601

Status: Active



Description:

Embrace the luxury of single-level living in this beautiful new construction home, thoughtfully crafted to meet modern needs. This residence features 2 generously sized bedrooms and a beautiful bathroom, boasting quality finishes. Enjoy the warmth of in-floor heating, the durability of solid core doors, and the energy efficiency of premium Marvin Windows—all complemented by the sleek LP SmartSide siding.

The spacious open-concept living area effortlessly connects to the kitchen, showcasing a sizable center island that offers comfortable seating for up to four guests. With ample closet space throughout, you'll find all the storage you need without compromising style.

Nestled in a tranquil development just minutes from Bemidji, this home provides a serene retreat while keeping you close to essential amenities. Take advantage of the opportunity to customize your living space with a variety of color options for cabinets, paint, flooring, doors, and siding.

In addition, both attached and detached garage packages are available upon request—contact us today to learn about Down Payment Assistance options and make this home your own!

Additional Details:

Year Built	2025
Lot Acres	1.34
Lot Dimensions	373.73x184.47x20.05x137.03
School District	31
Taxes	\$144
Taxes with Assessments	\$144
Tax Year	2025

Additional Features:

Fuel: Propane **Heat:** Boiler, Heat Pump, Radiant Floor

Driving Directions:



Listed By:
Paul Bunyan Drive to Carr Lake Rd SE, turn left on Little Norway Ave SE. Take first right onto Lake N Woods Realty
s on the corner of Maplewood and Edgewood.

Affinity Real Estate Inc. participates in the Regional Multiple Listing Service of Minnesota, Inc Broker Reciprocity (sm) program, allowing us to display other broker's listings on our website. All properties are subject to prior sale, change or withdrawal.



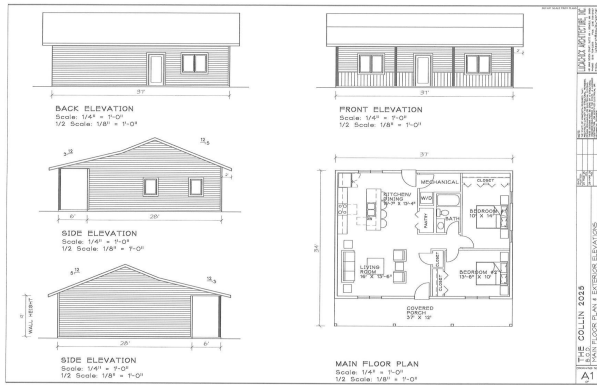
Call Affinity Real Estate

218-237-3333

info@affinityrealestate.com



Affinity Real Estate - 600 Park Avenue South - Park Rapids MN 56470



website: www.AffinityRealEstate.com | email: info@affinityrealestate.com | office: 218-237-3333 | fax: 218-237-3377



\$219,900
MLS 6693641 Residential
1933 Edgewood Drive
Bemidji MN 56601



website: www.AffinityRealEstate.com | email: info@affinityrealestate.com | office: 218-237-3333 | fax: 218-237-3377



\$219,900
MLS 6693641 Residential
1933 Edgewood Drive
Bemidji MN 56601



website: www.AffinityRealEstate.com | email: info@affinityrealestate.com | office: 218-237-3333 | fax: 218-237-3377



\$219,900
MLS 6693641 Residential
1933 Edgewood Drive
Bemidji MN 56601