

MLS 6693946 Residential

**\$268,450**

988 sq ft  
2 bedrooms  
2 baths

TBD Wrenner Lane  
Bemidji MN 56601

Status: Active

#### Description:

Serene New Construction on a Private Wooded Lot

Discover the perfect blend of nature and modern comfort with this to-be-built home, nestled on a peaceful wooded lot with a small pond. Enjoy the privacy and tranquility of this one-level living design, ideal for relaxation and convenience.

Located near public land and trails, outdoor enthusiasts will love the easy access to nature, whether it's hiking, wildlife watching, or simply unwinding in the quiet surroundings.

Don't miss this opportunity to build your dream home in a secluded yet accessible location!

#### Additional Details:

Year Built	2025
Lot Acres	3.1
Lot Dimensions	490x218
Garage Stalls	2
School District	31
Taxes	(unreported)
Taxes with Assessments	(unreported)
Tax Year	2025

#### Additional Features:

**Basement:** None **Fuel:** Propane **Garage:** 2 **Heat:** Boiler, Ductless Mini-Split, Radiant Floor **Sewer:** Private Sewer **Water:** Private **Air Conditioning:** Ductless Mini-Split

#### Driving Directions:

From Bemidji go west on Hwy 2. North on Eckles. Lt on Wrenner



Listed By:  
218 Real Estate

Affinity Real Estate Inc. participates in the Regional Multiple Listing Service of Minnesota, Inc Broker Reciprocity (sm) program, allowing us to display other broker's listings on our website. All properties are subject to prior sale, change or withdrawal.



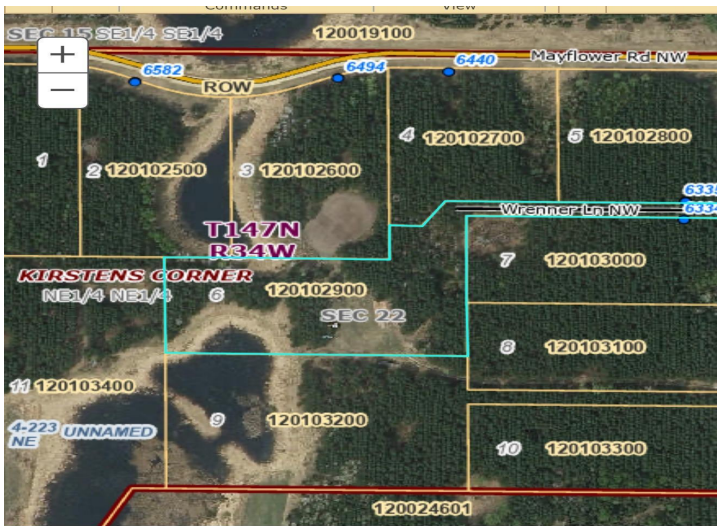
Call Affinity Real Estate

**218-237-3333**

[info@affinityrealestate.com](mailto:info@affinityrealestate.com)



Affinity Real Estate - 600 Park Avenue South - Park Rapids MN 56470



website: [www.AffinityRealEstate.com](http://www.AffinityRealEstate.com) | email: [info@affinityrealestate.com](mailto:info@affinityrealestate.com) | office: 218-237-3333 | fax: 218-237-3377



**\$268,450**

MLS 6693946 Residential  
TBD Wrenner Lane  
Bemidji MN 56601