



MLS 6694196 Lake Home

\$899,000

1,804 sq ft
3 bedrooms
2 baths

21626 County Highway 20
Pelican Rapids MN 56572

Waterfront: Pelican

Status: Active

Description:

Start your summer off with your very own lake home! Plenty of cottage charm on Pelican Lake with a 79' FF x 260 ft deep lot with a single stall garage and 3 parking spaces. Private Primary Suite with attached laundry. Open floor plan, refreshed kitchen and 2 bathrooms, 3 bedrooms with an additional spare room for plenty of sleeping space. 2 fireplaces, screened porch along with multiple outdoor seating areas for your entertaining and outdoor enjoyment.

Additional Details:

Year Built	1948
Lot Acres	0.4
Lot Dimensions	79 x 260
Garage Stalls	1
School District	548
Taxes	\$6,096
Taxes with Assessments	\$6,179
Tax Year	2025

Additional Features:

Basement: Crawl Space **Fuel:** Electric **Garage:** 1 **Heat:** Baseboard **Sewer:** Private Sewer **Water:** Private **Air Conditioning:** Window Unit(s)

Driving Directions:

I94 E take exit 24 for MN 34 towards Detroit Lakes, left on MN 34 for 15 mi, left on Co Hwy 9 for 5.6 mi to property.



Listed By:
Park Co., REALTORS®

Affinity Real Estate Inc. participates in the Regional Multiple Listing Service of Minnesota, Inc Broker Reciprocity (sm) program, allowing us to display other broker's listings on our website. All properties are subject to prior sale, change or withdrawal.



Call Affinity Real Estate

218-237-3333

info@affinityrealestate.com



Affinity Real Estate - 600 Park Avenue South - Park Rapids MN 56470



website: www.AffinityRealEstate.com | email: info@affinityrealestate.com | office: 218-237-3333 | fax: 218-237-3377

Affinity
REAL ESTATE INC

\$899,000

MLS 6694196 Lake Home
21626 County Highway 20
Pelican Rapids MN 56572



website: www.AffinityRealEstate.com | email: info@affinityrealestate.com | office: 218-237-3333 | fax:218-237-3377



\$899,000
MLS 6694196 Lake Home
21626 County Highway 20
Pelican Rapids MN 56572



website: www.AffinityRealEstate.com | email: info@affinityrealestate.com | office: 218-237-3333 | fax: 218-237-3377

Affinity
REAL ESTATE INC

\$899,000
MLS 6694196 Lake Home
21626 County Highway 20
Pelican Rapids MN 56572



website: www.AffinityRealEstate.com | email: info@affinityrealestate.com | office: 218-237-3333 | fax:218-237-3377

Affinity
REAL ESTATE INC

\$899,000
MLS 6694196 Lake Home
21626 County Highway 20
Pelican Rapids MN 56572



website: www.AffinityRealEstate.com | email: info@affinityrealestate.com | office: 218-237-3333 | fax:218-237-3377

Affinity
REAL ESTATE INC

\$899,000
MLS 6694196 Lake Home
21626 County Highway 20
Pelican Rapids MN 56572



website: www.AffinityRealEstate.com | email: info@affinityrealestate.com | office: 218-237-3333 | fax:218-237-3377



\$899,000
MLS 6694196 Lake Home
21626 County Highway 20
Pelican Rapids MN 56572



website: www.AffinityRealEstate.com | email: info@affinityrealestate.com | office: 218-237-3333 | fax:218-237-3377

Affinity
REAL ESTATE INC

\$899,000
MLS 6694196 Lake Home
21626 County Highway 20
Pelican Rapids MN 56572



website: www.AffinityRealEstate.com | email: info@affinityrealestate.com | office: 218-237-3333 | fax:218-237-3377

Affinity
REAL ESTATE INC

\$899,000

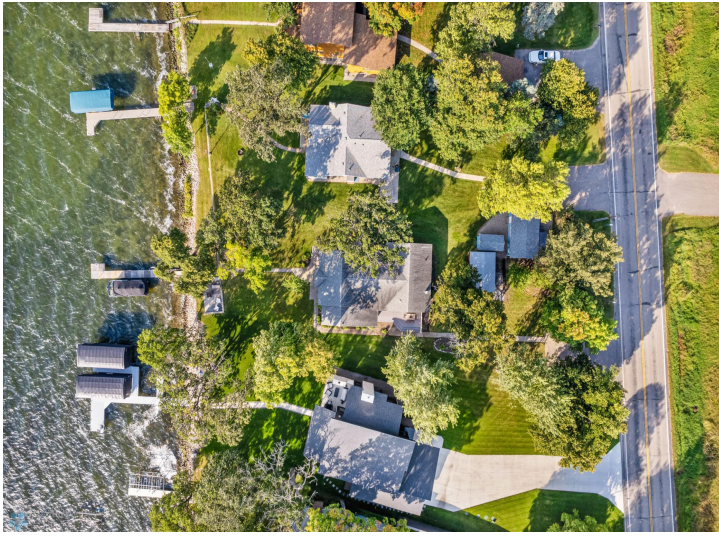
MLS 6694196 Lake Home
21626 County Highway 20
Pelican Rapids MN 56572



website: www.AffinityRealEstate.com | email: info@affinityrealestate.com | office: 218-237-3333 | fax:218-237-3377



\$899,000
MLS 6694196 Lake Home
21626 County Highway 20
Pelican Rapids MN 56572



website: www.AffinityRealEstate.com | email: info@affinityrealestate.com | office: 218-237-3333 | fax:218-237-3377



\$899,000
MLS 6694196 Lake Home
21626 County Highway 20
Pelican Rapids MN 56572