



MLS 6694292 Lake Land

\$119,000

Description:

Here's an affordable way to own 200' of shoreline and nearly 8 acres on sought after Steamboat Lake! You'll love the mix of pines, cedars, and hardwoods. Wildflowers and wildlife are plentiful. This property has room to build on the north side and then you have a nice boardwalk in place to access your lakeshore. It is shared with the property directly to the west of this and it can accommodate a 4-wheeler, golf cart or snowmobile with room to turn around at the lake. Once down at the lake you'll enjoy sandy shoreline with stunning views of the lake. Steamboat Lake is 1,755 acres with a max depth of 93 feet and is an excellent fishery. It's connected to Leech Lake so you have the option to explore other water. No covenants or restrictions here so it's ready for your camper or dream up north getaway! Only 7 miles to Laporte and 18 miles to the always fun town of Walker. Once you're here, you won't want to leave!

Additional Details:

Lot Acres	7.83
Lot Dimensions	200x261x1670x1524
School District	306
Taxes	\$704
Taxes with Assessments	\$704
Tax Year	2024

Additional Features:

Driving Directions:

From Laporte, north on County Rd 39 for 4.8 miles. Right onto 315th Ave for .5 miles. Keep going on County Rd 5 for 1.4 miles. Take a right onto Quail Ln and the property will be approximately 50 yards on your right.



Listed By:
Bill Hansen Realty/Longville

Affinity Real Estate Inc. participates in the Regional Multiple Listing Service of Minnesota, Inc Broker Reciprocity (sm) program, allowing us to display other broker's listings on our website. All properties are subject to prior sale, change or withdrawal.



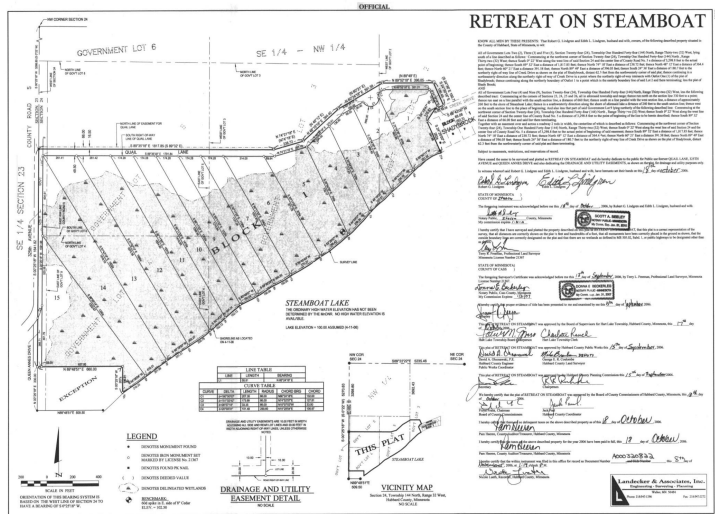
Call Affinity Real Estate

218-237-3333

info@affinityrealestate.com



Affinity Real Estate - 600 Park Avenue South - Park Rapids MN 56470



website: www.AffinityRealEstate.com | email: info@affinityrealestate.com | office: 218-237-3333 | fax: 218-237-3377

Affinity
REAL ESTATE INC

\$119,000
MLS 6694292 Lake Land
32597 Quail Lane
Laporte MN 56461



website: www.AffinityRealEstate.com | email: info@affinityrealestate.com | office: 218-237-3333 | fax: 218-237-3377



\$119,000
MLS 6694292 Lake Land
32597 Quail Lane
Laporte MN 56461



website: www.AffinityRealEstate.com | email: info@affinityrealestate.com | office: 218-237-3333 | fax:218-237-3377



\$119,000

MLS 6694292 Lake Land
32597 Quail Lane
Laporte MN 56461