



MLS 6694377 Commercial

**\$327,000**

37325 State Highway 108  
Dent MN 56528

Status: Active

**Description:**

Commercial opportunity with state highway frontage! This well kept commercial property is ideal for a storefront or for tradespeople looking for extra space and storage for equipment. The office/garage was built in 1988 and has 960' of finished space with reception, office space, and breakroom with a bathroom. The attached garage (30'x24') is heated and insulated with two stalls - one that has a below-grade pit for safely working on vehicles. Building 2, built in 2012, is 40'x40' and had the interior insulated and sheeted in 2024. Building 2 has a man door and a single overhead door measuring 12'x16'. Building 3 is 48'x58' and has dual overhead doors (8'x12' and 14'x16') opening into separate, dedicated storage areas.

This space has huge potential for a growing and expanding business, or for seasonal storage! Take a look and see the opportunity it has to offer.

Agent is related to seller.

**Additional Details:**

Year Built	1988
Lot Acres	1.09
Lot Dimensions	165x288
Garage Stalls	5
School District	549
Taxes	\$1,066
Taxes with Assessments	\$1,066
Tax Year	2024

**Additional Features:**

**Fuel:** Electric **Garage:** 5 **Heat:** Baseboard **Sewer:** Holding Tank **Water:** Sand Point

**Driving Directions:**

from Perham - head South on Hwy 78, then turn West on Highway 108. Shop is on the North side of the road.



Listed By:  
Weichert RE - Paulson Land Co

Affinity Real Estate Inc. participates in the Regional Multiple Listing Service of Minnesota, Inc Broker Reciprocity (sm) program, allowing us to display other broker's listings on our website. All properties are subject to prior sale, change or withdrawal.



**Call Affinity Real Estate**

**218-237-3333**

**info@affinityrealestate.com**



**Affinity Real Estate - 600 Park Avenue South - Park Rapids MN 56470**





website: [www.AffinityRealEstate.com](http://www.AffinityRealEstate.com) | email: [info@affinityrealestate.com](mailto:info@affinityrealestate.com) | office: 218-237-3333 | fax: 218-237-3377



**\$327,000**  
 MLS 6694377 Commercial  
 37325 State Highway 108  
 Dent MN 56528





website: [www.AffinityRealEstate.com](http://www.AffinityRealEstate.com) | email: [info@affinityrealestate.com](mailto:info@affinityrealestate.com) | office: 218-237-3333 | fax: 218-237-3377

**Affinity**  
REAL ESTATE INC

**\$327,000**

MLS 6694377 Commercial  
37325 State Highway 108  
Dent MN 56528



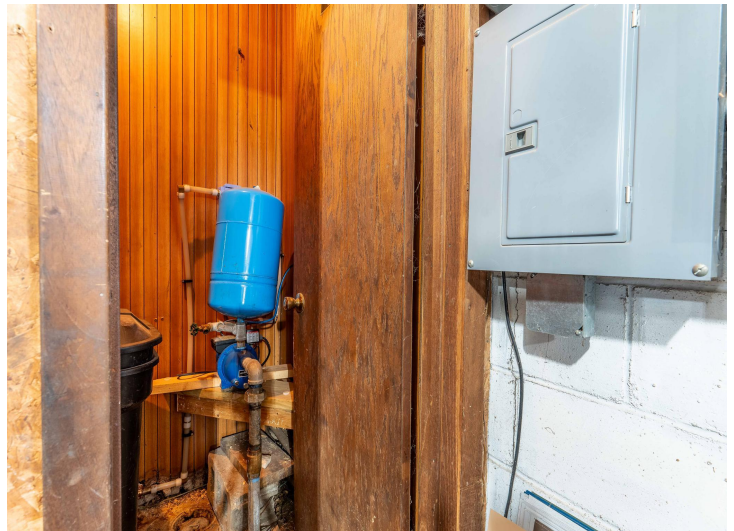


website: [www.AffinityRealEstate.com](http://www.AffinityRealEstate.com) | email: [info@affinityrealestate.com](mailto:info@affinityrealestate.com) | office: 218-237-3333 | fax: 218-237-3377

**Affinity**  
REAL ESTATE INC

**\$327,000**  
MLS 6694377 Commercial  
37325 State Highway 108  
Dent MN 56528



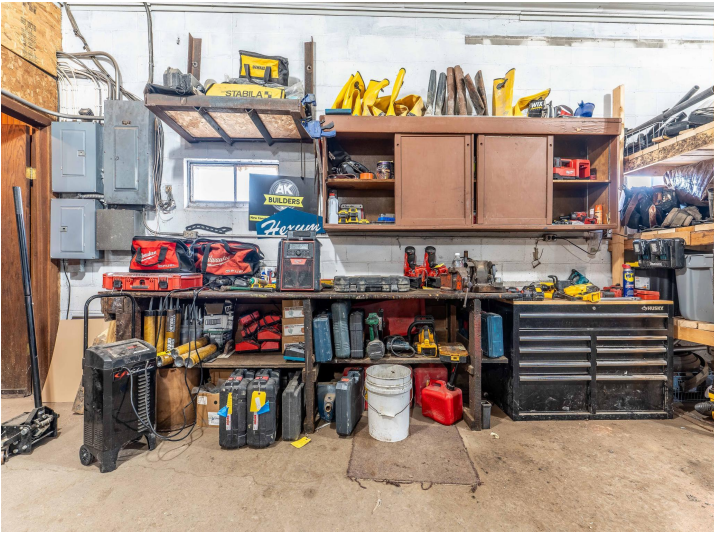


website: [www.AffinityRealEstate.com](http://www.AffinityRealEstate.com) | email: [info@affinityrealestate.com](mailto:info@affinityrealestate.com) | office: 218-237-3333 | fax: 218-237-3377



**\$327,000**  
 MLS 6694377 Commercial  
 37325 State Highway 108  
 Dent MN 56528





website: [www.AffinityRealEstate.com](http://www.AffinityRealEstate.com) | email: [info@affinityrealestate.com](mailto:info@affinityrealestate.com) | office: 218-237-3333 | fax: 218-237-3377



**\$327,000**  
 MLS 6694377 Commercial  
 37325 State Highway 108  
 Dent MN 56528





website: [www.AffinityRealEstate.com](http://www.AffinityRealEstate.com) | email: [info@affinityrealestate.com](mailto:info@affinityrealestate.com) | office: 218-237-3333 | fax: 218-237-3377

**Affinity**  
REAL ESTATE INC

**\$327,000**  
MLS 6694377 Commercial  
37325 State Highway 108  
Dent MN 56528





website: [www.AffinityRealEstate.com](http://www.AffinityRealEstate.com) | email: [info@affinityrealestate.com](mailto:info@affinityrealestate.com) | office: 218-237-3333 | fax: 218-237-3377



**\$327,000**  
 MLS 6694377 Commercial  
 37325 State Highway 108  
 Dent MN 56528





website: [www.AffinityRealEstate.com](http://www.AffinityRealEstate.com) | email: [info@affinityrealestate.com](mailto:info@affinityrealestate.com) | office: 218-237-3333 | fax: 218-237-3377



**\$327,000**  
 MLS 6694377 Commercial  
 37325 State Highway 108  
 Dent MN 56528





website: [www.AffinityRealEstate.com](http://www.AffinityRealEstate.com) | email: [info@affinityrealestate.com](mailto:info@affinityrealestate.com) | office: 218-237-3333 | fax: 218-237-3377



**\$327,000**  
 MLS 6694377 Commercial  
 37325 State Highway 108  
 Dent MN 56528