



MLS 6694562 Residential

\$219,900

1,036 sq ft
2 bedrooms
1 baths

TBD Zelda Court
Bemidji MN 56601

Status: Active

Description:

Charming New Construction on a Wooded Lot – Minutes from Bemidji. Embrace the perfect blend of country charm and modern convenience with this to-be-built home on a beautiful wooded lot. Enjoy peaceful surroundings while relaxing on the covered porch, a perfect spot to take in the natural beauty around you. Inside, the thoughtfully designed layout features a modern kitchen with brand-new appliances included. This serene country setting is just minutes from Bemidji's amenities, offering the best of both worlds. Looking for extra storage or parking? An attached or detached garage can be added for an additional cost, allowing you to customize the home to fit your needs. Don't miss this opportunity to build your dream home in a prime location!

Additional Details:

Year Built	2025
Lot Acres	1.05
Lot Dimensions	155x295
School District	31
Taxes	\$208
Taxes with Assessments	\$208
Tax Year	2023

Additional Features:

Basement: None **Fuel:** Propane **Heat:** Boiler, Radiant Floor **Sewer:** Private Sewer **Water:** Private **Air Conditioning:** Ductless Mini-Split, Geothermal

Driving Directions:

From Bemidji go west on Hwy 2. Turn right onto county Rd 9. Follow to Zelda Ct Nw on Rt. Turn Rt first place on Rt.



Listed By:
218 Real Estate

Affinity Real Estate Inc. participates in the Regional Multiple Listing Service of Minnesota, Inc Broker Reciprocity (sm) program, allowing us to display other broker's listings on our website. All properties are subject to prior sale, change or withdrawal.



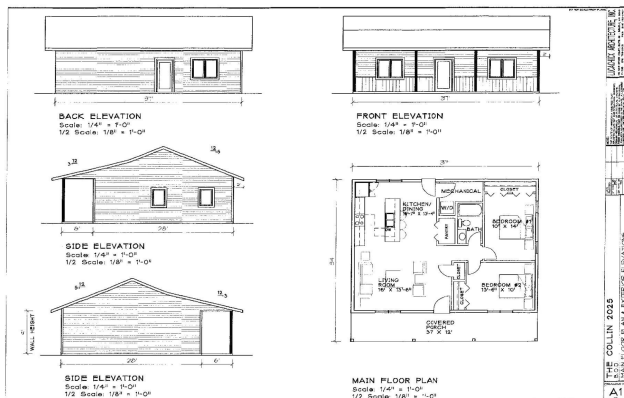
Call Affinity Real Estate

218-237-3333

info@affinityrealestate.com



Affinity Real Estate - 600 Park Avenue South - Park Rapids MN 56470



website: www.AffinityRealEstate.com | email: info@affinityrealestate.com | office: 218-237-3333 | fax: 218-237-3377



\$219,900
 MLS 6694562 Residential
 TBD Zelda Court
 Bemidji MN 56601