



MLS 6694860 Land

**\$29,000**

6.52 Acres  
Subdivided

335XX Co Hwy 77 [D]  
Wadena MN 56482

Status: Active

**Description:**

Nestled at the end of a quiet Cul-de-Sac, this 6.52-Acre parcel offers Privacy and Space in a new Rural Development just minutes from Downtown Wadena. The Flat, Buildable Terrain provides an excellent foundation for your Dream Home, with plenty of room for Outbuildings, Gardens, or Recreational Space.

Enjoy the Peaceful Surroundings while still being conveniently close to Town and the New Hospital. A newly constructed Gravel Road ensures Easy Access—don't miss this opportunity to claim a Prime Homesite in this growing Community!

**Additional Details:**

Lot Acres	6.52
Lot Dimensions	802 x 455 x 466 x 380
School District	2155
Taxes	\$762
Taxes with Assessments	\$762
Tax Year	2024

**Additional Features:**

**Driving Directions:**

Head east on US-10 E toward Breuer Ave, then turn right onto Co Hwy 77. After 1.6 miles, turn left toward Wadena Municipal Airport. The destination will be on the right after .1 miles.



Listed By:  
Jack Chivers Realty

Affinity Real Estate Inc. participates in the Regional Multiple Listing Service of Minnesota, Inc Broker Reciprocity (sm) program, allowing us to display other broker's listings on our website. All properties are subject to prior sale, change or withdrawal.



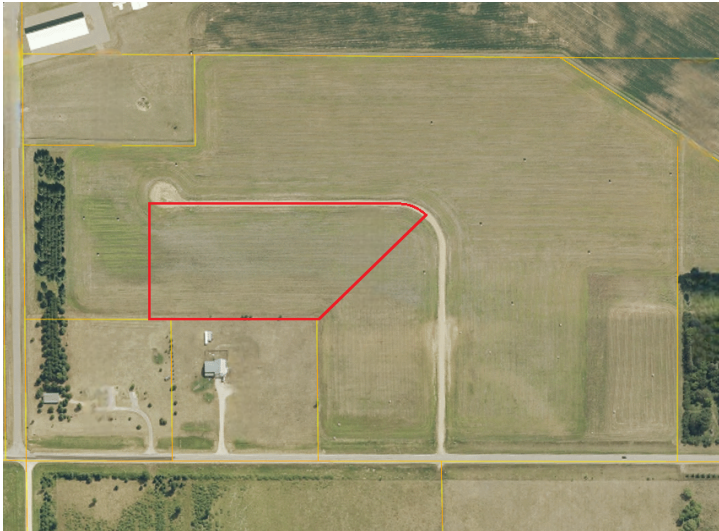
Call Affinity Real Estate

**218-237-3333**

[info@affinityrealestate.com](mailto:info@affinityrealestate.com)



Affinity Real Estate - 600 Park Avenue South - Park Rapids MN 56470



website: [www.AffinityRealEstate.com](http://www.AffinityRealEstate.com) | email: [info@affinityrealestate.com](mailto:info@affinityrealestate.com) | office: 218-237-3333 | fax:218-237-3377



**\$29,000**  
MLS 6694860 Land  
335XX Co Hwy 77 [D]  
Wadena MN 56482