



MLS 6695225 Residential

\$421,900

1,920 sq ft
3 bedrooms
2 baths

3130 Sumac Road
Bemidji MN 56601

Status: Pending

Description:

Stunning 3-Bedroom, 2-Bathroom Home on 13.49 Acres - Close to Town, Lake Bemidji State Park & Golf Course! Welcome to your dream home! This meticulously maintained 3-bedroom, 2-bathroom residence offers 1,920 sq ft of comfortable living space and sits on a sprawling 13.49-acre lot with a asphalt driveway with plenty of parking, concrete patio, just minutes from town and a short drive from the local golf course. (Big bonus if you love golf, this property has it's own 5 golf course holes!!) Whether you're looking for peace and privacy or the convenience of nearby amenities, this property offers the best of both worlds.

Key Features:

Spacious Living: 1,920 sq ft of open, bright living space with 3 generously sized bedrooms and 2 full bathrooms.

Expansive Garage: Attached 1,500 sq ft drive-through garage, perfect for storing vehicles, equipment, or creating your own workshop.

Storage Galore: ICF block crawl space built on a sturdy slab foundation, offering ample storage and keeping your home secure and energy-efficient.


Beautiful Acreage: 13.49 acres of land, providing endless opportunities for outdoor activities, gardening, or even potential expansion.

Prime Location: Just a stone's throw away from town and a short drive to the local golf course, you'll have the perfect balance of country living with convenient access to amenities.

This home is perfect for anyone who appreciates space, tranquility, and a touch of luxury. Don't miss out on this rare find – schedule your showing today and make this incredible property yours!

Additional Details:

Year Built	2020
Lot Acres	13.49
Lot Dimensions	660x1260
Garage Stalls	4
School District	31
Taxes	\$3,682
Taxes with Assessments	\$3,682
Tax Year	2024



Listed By:
Real Broker, LLC

Basement: Crawl Space, Insulating Concrete Forms, Slab, **Fuel:** Natural Gas, **Heating:** Forced Air, **Sewer:** Private Sewer, **Water:** Private

Air Conditioning: Central Air

Service of Minnesota, Inc Broker Reciprocity (sm) program, allowing us to display other broker's listings on our website. All properties are subject to prior sale, change or withdrawal.

Driving Directions:
Bemidji Ave N to Sumac Rd, follow to property on the right.



Call Affinity Real Estate

218-237-3333

info@affinityrealestate.com



Affinity Real Estate - 600 Park Avenue South - Park Rapids MN 56470



website: www.AffinityRealEstate.com | email: info@affinityrealestate.com | office: 218-237-3333 | fax: 218-237-3377



\$421,900
 MLS 6695225 Residential
 3130 Sumac Road
 Bemidji MN 56601



website: www.AffinityRealEstate.com | email: info@affinityrealestate.com | office: 218-237-3333 | fax: 218-237-3377

Affinity
REAL ESTATE INC

\$421,900
MLS 6695225 Residential
3130 Sumac Road
Bemidji MN 56601



website: www.AffinityRealEstate.com | email: info@affinityrealestate.com | office: 218-237-3333 | fax: 218-237-3377



\$421,900
MLS 6695225 Residential
3130 Sumac Road
Bemidji MN 56601



website: www.AffinityRealEstate.com | email: info@affinityrealestate.com | office: 218-237-3333 | fax: 218-237-3377

Affinity
REAL ESTATE INC

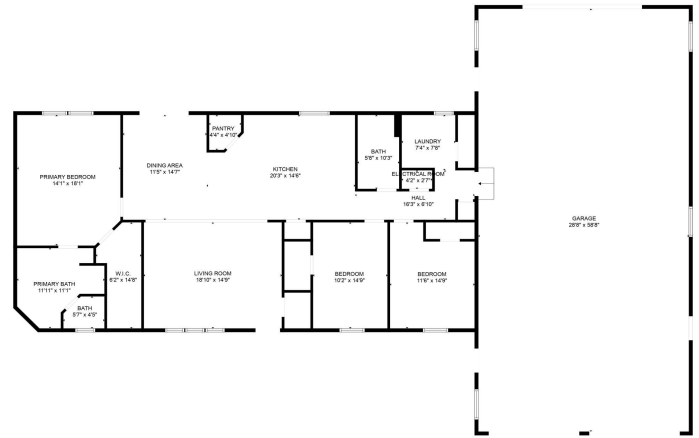
\$421,900
MLS 6695225 Residential
3130 Sumac Road
Bemidji MN 56601



website: www.AffinityRealEstate.com | email: info@affinityrealestate.com | office: 218-237-3333 | fax: 218-237-3377

Affinity
REAL ESTATE INC

\$421,900
MLS 6695225 Residential
3130 Sumac Road
Bemidji MN 56601



FLOOR PLAN CREATED BY CUBICSCA APP. MEASUREMENTS DEEMED HIGHLY RELIABLE BUT NOT GUARANTEED.

website: www.AffinityRealEstate.com | email: info@affinityrealestate.com | office: 218-237-3333 | fax: 218-237-3377



\$421,900
MLS 6695225 Residential
3130 Sumac Road
Bemidji MN 56601