



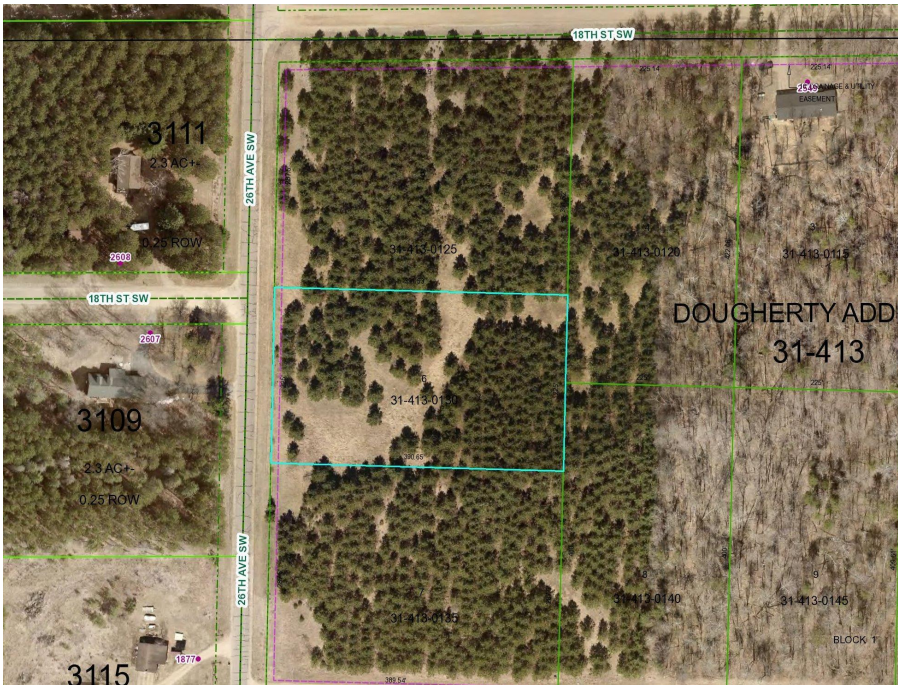
MLS 6695271 Land

\$30,000

2 Acres
Raw Land

Lot 6 26th Avenue
Backus MN 56435

Status: Pending



Description:

This prime tract has power to the lot and excellent road frontage for easy access. The land is rolling with many mature Red Pines and hardwoods allowing for great views. The lot is within a mile of town adding multiple amenities for your future home.

Additional Details:

Lot Acres	2
Lot Dimensions	225x391
School District	1065
Taxes	\$100
Taxes with Assessments	\$100
Tax Year	2025

Additional Features:

Driving Directions:

From Pine River go 1 mile north on 371 to 26th Avenue SW then right on 26th for 3/4 mile to Oak Crest Court. Lots face 26th Avenue and 18th Street SW as well as Oak Crest Court SW.



Listed By:
Heartland Real Estate

Affinity Real Estate Inc. participates in the Regional Multiple Listing Service of Minnesota, Inc Broker Reciprocity (sm) program, allowing us to display other broker's listings on our website. All properties are subject to prior sale, change or withdrawal.



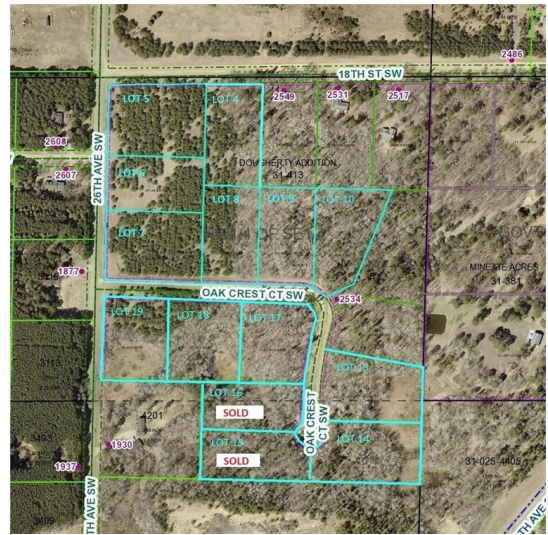
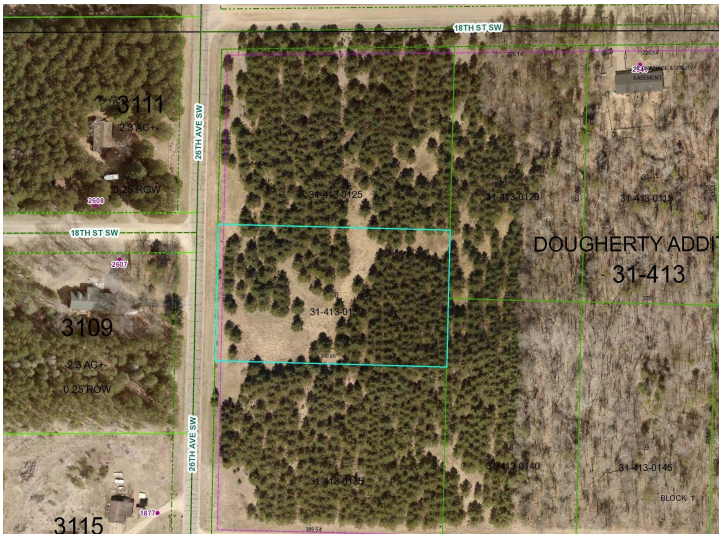
Call Affinity Real Estate

218-237-3333

info@affinityrealestate.com



Affinity Real Estate - 600 Park Avenue South - Park Rapids MN 56470



website: www.AffinityRealEstate.com | email: info@affinityrealestate.com | office: 218-237-3333 | fax: 218-237-3377



\$30,000
 MLS 6695271 Land
 Lot 6 26th Avenue
 Backus MN 56435