

MLS 6695364 Land

**\$25,000**

2.4 Acres  
Raw Land

Lot 14 OAK CREST Court  
Backus MN 56435

Status: Pending

#### Description:

This prime tract has power to the lot and excellent road frontage for easy access. The land is rolling with many mature Red Pines and hardwoods allowing for great views. The lot is within a mile of town adding multiple amenities for your future home.

#### Additional Details:

Lot Acres	2.4
Lot Dimensions	153x411x250x443x140
School District	2174
Taxes	\$100
Taxes with Assessments	\$100
Tax Year	2025

#### Additional Features:

#### Driving Directions:

From Pine River go 1 mile north on 371 to 26th Avenue SW then right on 26th for 3/4 mile to Oak Crest Court. Lots face 26th Avenue and 18th Street SW as well as Oak Crest Court SW.



Listed By:  
Heartland Real Estate

Affinity Real Estate Inc. participates in the Regional Multiple Listing Service of Minnesota, Inc Broker Reciprocity (sm) program, allowing us to display other broker's listings on our website. All properties are subject to prior sale, change or withdrawal.



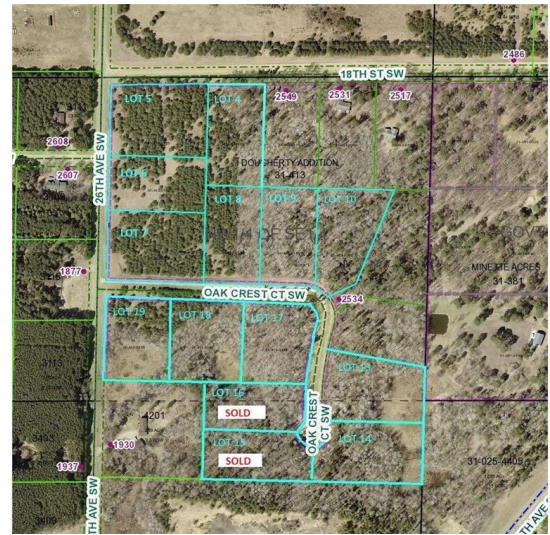
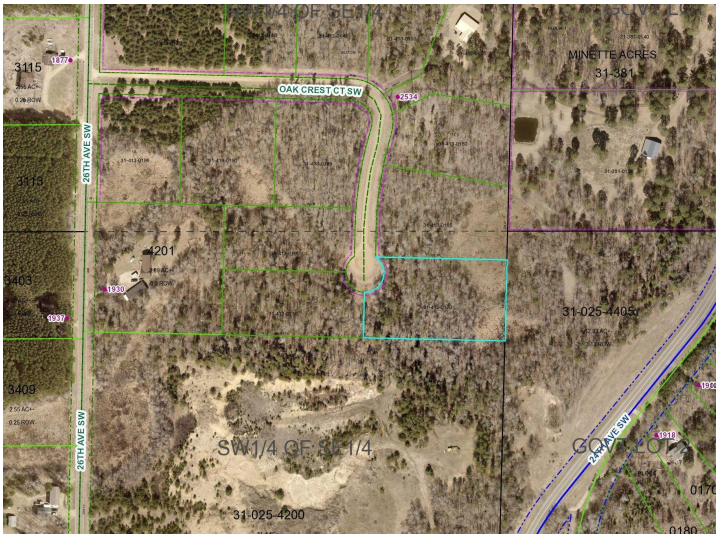
Call Affinity Real Estate

**218-237-3333**

[info@affinityrealestate.com](mailto:info@affinityrealestate.com)



Affinity Real Estate - 600 Park Avenue South - Park Rapids MN 56470



website: [www.AffinityRealEstate.com](http://www.AffinityRealEstate.com) | email: [info@affinityrealestate.com](mailto:info@affinityrealestate.com) | office: 218-237-3333 | fax: 218-237-3377



**\$25,000**  
 MLS 6695364 Land  
 Lot 14 OAK CREST Court  
 Backus MN 56435