



MLS 6695987 Land

\$39,000

3 Acres
Subdivided

371XX 280th Ave [B]
Dent MN 56528

Status: Active

Description:

Discover the perfect blend of Open Space and Natural Beauty with this 3-Acre lot. Offering a blank canvas for your Dream Home or recreational retreat, this land features Excellent Build Site Potential and Serene Surroundings. Surrounded by Nature yet close to Maplewood State Park, it's an ideal spot for those seeking Tranquility or Outdoor Adventure. Whether you envision a Cozy Cabin, a Custom Home, or a Shouse, this property has the space and charm to Bring Your Vision To Life. Call Today to explore this Fantastic Opportunity!

Additional Details:

Lot Acres	3
Lot Dimensions	295 x 445
School District	548
Taxes	\$2,804
Taxes with Assessments	\$2,804
Tax Year	2024

Additional Features:

Driving Directions:

From Dent, Head West on Hwy 108. Continue until Co Hwy 41, then turn left. Stay on Hwy 41 for 2.3 Miles, then turn right onto 380th St. After 2.5 miles, continue around the bend onto 280th St and a sign on the right will mark the property.



Listed By:
Jack Chivers Realty

Affinity Real Estate Inc. participates in the Regional Multiple Listing Service of Minnesota, Inc Broker Reciprocity (sm) program, allowing us to display other broker's listings on our website. All properties are subject to prior sale, change or withdrawal.



Call Affinity Real Estate

218-237-3333

info@affinityrealestate.com



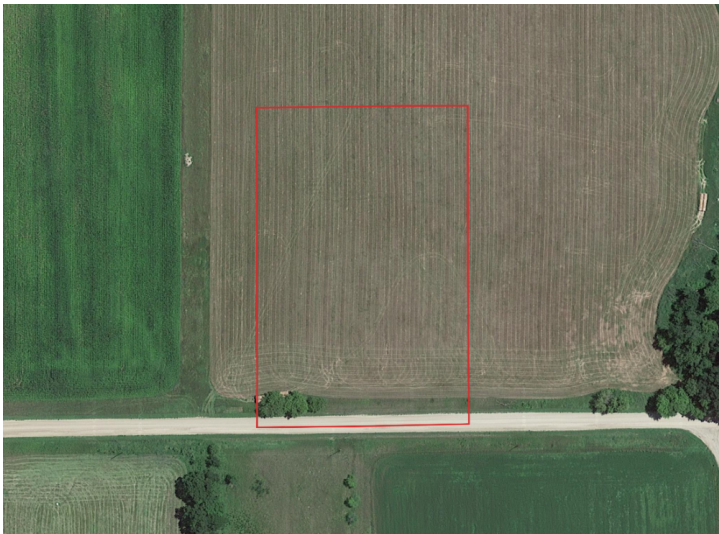
Affinity Real Estate - 600 Park Avenue South - Park Rapids MN 56470



website: www.AffinityRealEstate.com | email: info@affinityrealestate.com | office: 218-237-3333 | fax:218-237-3377



\$39,000
MLS 6695987 Land
371XX 280th Ave [B]
Dent MN 56528



website: www.AffinityRealEstate.com | email: info@affinityrealestate.com | office: 218-237-3333 | fax:218-237-3377



\$39,000
MLS 6695987 Land
371XX 280th Ave [B]
Dent MN 56528