



MLS 6696030 Lake Home

**\$1,100,000**

3,960 sq ft  
4 bedrooms  
3 baths

14658 Thomas Road  
Lake Park MN 56554

Waterfront: Turtle

Status: Pending

**Description:**

Turtle Lake - Custom Built Lakefront Home: First time on the market, this stunning custom-built lake home offers 4 bedrooms and 3 bathrooms, perfectly designed for lakeside living. Nestled on a spacious, level lot with 100 feet of prime swimming beach, this home provides everything you need to enjoy the beauty of Turtle Lake. The main floor features a bright, open great room, a dining area, and a spacious kitchen with a walk-in pantry. The master suite offers a peaceful retreat, while the executive office is ideal for those working from home. A large laundry room, a beautifully tiled bath with a shower, and direct access to the beach complete the main level. Upstairs, you'll find a large family room, three generously sized bedrooms with walk-in closets, a full bathroom, a playroom, and a bonus room above the garage. A 1,400-square-foot oversized garage that's fully finished and heated, with 10-foot-wide doors are a bonus. Turtle Lake is renowned for its crystal-clear waters, and this property is located just 40 minutes from Fargo-Moorhead and 20 minutes from Detroit Lakes. Make Turtle Lake your new home.

**Additional Details:**

Year Built	2012
Lot Acres	0.46
Lot Dimensions	100 x 210 +/-
Garage Stalls	2
School District	2889
Taxes	\$7,174
Taxes with Assessments	\$7,174
Tax Year	2025

**Additional Features:**

**Fuel:** Electric, Propane **Heat:** Boiler, Dual, Forced Air, Radiant Floor

**Driving Directions:**

From Lake Park: West one mile on Hwy 10 to Becker County #1. South on Becker #1 8 miles to 147th St. West on 147th St to Thomas Road/300th St. South on Thomas Road to property.



Listed By:  
Cormorant Realty

Affinity Real Estate Inc. participates in the Regional Multiple Listing Service of Minnesota, Inc Broker Reciprocity (sm) program, allowing us to display other broker's listings on our website. All properties are subject to prior sale, change or withdrawal.



**Call Affinity Real Estate**

**218-237-3333**

**info@affinityrealestate.com**



**Affinity Real Estate - 600 Park Avenue South - Park Rapids MN 56470**



website: [www.AffinityRealEstate.com](http://www.AffinityRealEstate.com) | email: [info@affinityrealestate.com](mailto:info@affinityrealestate.com) | office: 218-237-3333 | fax:218-237-3377

**Affinity**  
REAL ESTATE INC

**\$1,100,000**  
MLS 6696030 Lake Home  
14658 Thomas Road  
Lake Park MN 56554



website: [www.AffinityRealEstate.com](http://www.AffinityRealEstate.com) | email: [info@affinityrealestate.com](mailto:info@affinityrealestate.com) | office: 218-237-3333 | fax:218-237-3377

**Affinity**  
REAL ESTATE INC

**\$1,100,000**  
MLS 6696030 Lake Home  
14658 Thomas Road  
Lake Park MN 56554



website: [www.AffinityRealEstate.com](http://www.AffinityRealEstate.com) | email: [info@affinityrealestate.com](mailto:info@affinityrealestate.com) | office: 218-237-3333 | fax:218-237-3377

**Affinity**  
REAL ESTATE INC

**\$1,100,000**  
MLS 6696030 Lake Home  
14658 Thomas Road  
Lake Park MN 56554



website: [www.AffinityRealEstate.com](http://www.AffinityRealEstate.com) | email: [info@affinityrealestate.com](mailto:info@affinityrealestate.com) | office: 218-237-3333 | fax:218-237-3377

**Affinity**  
REAL ESTATE INC

**\$1,100,000**  
MLS 6696030 Lake Home  
14658 Thomas Road  
Lake Park MN 56554



website: [www.AffinityRealEstate.com](http://www.AffinityRealEstate.com) | email: [info@affinityrealestate.com](mailto:info@affinityrealestate.com) | office: 218-237-3333 | fax:218-237-3377

**Affinity**  
REAL ESTATE INC

**\$1,100,000**  
MLS 6696030 Lake Home  
14658 Thomas Road  
Lake Park MN 56554



website: [www.AffinityRealEstate.com](http://www.AffinityRealEstate.com) | email: [info@affinityrealestate.com](mailto:info@affinityrealestate.com) | office: 218-237-3333 | fax:218-237-3377

**Affinity**  
REAL ESTATE INC

**\$1,100,000**  
MLS 6696030 Lake Home  
14658 Thomas Road  
Lake Park MN 56554



website: [www.AffinityRealEstate.com](http://www.AffinityRealEstate.com) | email: [info@affinityrealestate.com](mailto:info@affinityrealestate.com) | office: 218-237-3333 | fax:218-237-3377

**Affinity**  
REAL ESTATE INC

**\$1,100,000**  
MLS 6696030 Lake Home  
14658 Thomas Road  
Lake Park MN 56554





website: [www.AffinityRealEstate.com](http://www.AffinityRealEstate.com) | email: [info@affinityrealestate.com](mailto:info@affinityrealestate.com) | office: 218-237-3333 | fax:218-237-3377

**Affinity**  
REAL ESTATE INC

**\$1,100,000**  
MLS 6696030 Lake Home  
14658 Thomas Road  
Lake Park MN 56554



website: [www.AffinityRealEstate.com](http://www.AffinityRealEstate.com) | email: [info@affinityrealestate.com](mailto:info@affinityrealestate.com) | office: 218-237-3333 | fax:218-237-3377



**\$1,100,000**  
MLS 6696030 Lake Home  
14658 Thomas Road  
Lake Park MN 56554



website: [www.AffinityRealEstate.com](http://www.AffinityRealEstate.com) | email: [info@affinityrealestate.com](mailto:info@affinityrealestate.com) | office: 218-237-3333 | fax:218-237-3377

**Affinity**  
REAL ESTATE INC

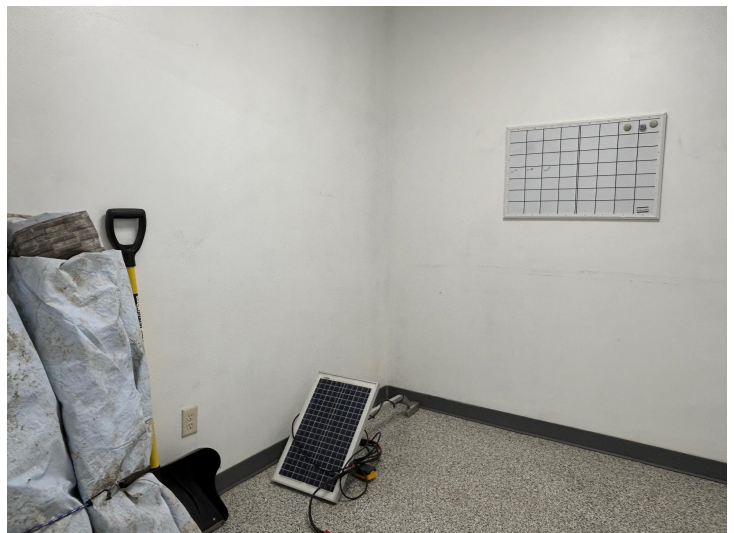
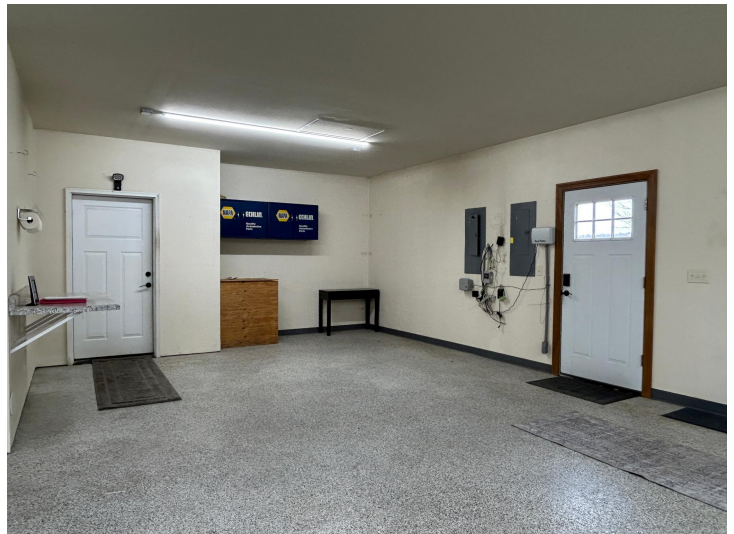
**\$1,100,000**  
MLS 6696030 Lake Home  
14658 Thomas Road  
Lake Park MN 56554



website: [www.AffinityRealEstate.com](http://www.AffinityRealEstate.com) | email: [info@affinityrealestate.com](mailto:info@affinityrealestate.com) | office: 218-237-3333 | fax:218-237-3377



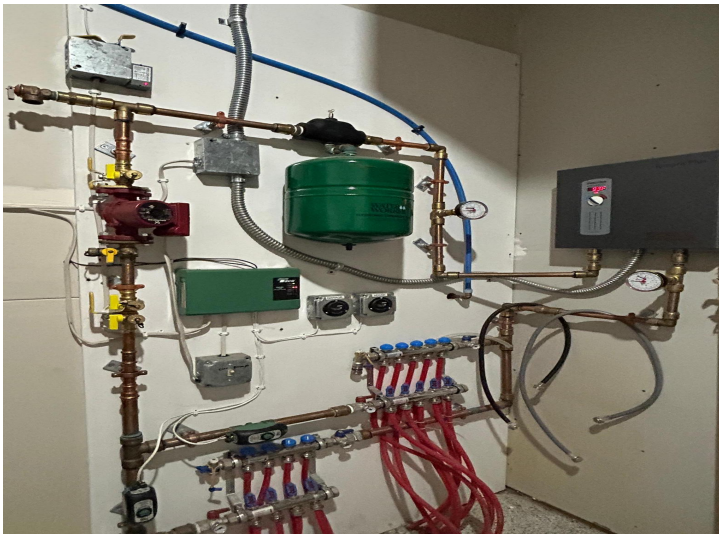
**\$1,100,000**  
MLS 6696030 Lake Home  
14658 Thomas Road  
Lake Park MN 56554



website: [www.AffinityRealEstate.com](http://www.AffinityRealEstate.com) | email: [info@affinityrealestate.com](mailto:info@affinityrealestate.com) | office: 218-237-3333 | fax:218-237-3377

**Affinity**  
REAL ESTATE INC

**\$1,100,000**  
MLS 6696030 Lake Home  
14658 Thomas Road  
Lake Park MN 56554



website: [www.AffinityRealEstate.com](http://www.AffinityRealEstate.com) | email: [info@affinityrealestate.com](mailto:info@affinityrealestate.com) | office: 218-237-3333 | fax:218-237-3377



**\$1,100,000**  
MLS 6696030 Lake Home  
14658 Thomas Road  
Lake Park MN 56554