

MLS 6696135 Lake Land

**\$157,900**

**Description:**

Nice private lot on Lake Anna with 200 feet of level shoreline on 5+/- Acres includes a 34X56 Steel pole building with a concrete floor. You must see the endless possibilities to build your future home or just use for summer camping.

Owner/Agent

**Additional Details:**

Lot Acres	5
Lot Dimensions	5 Acres
School District	550
Taxes	\$394
Taxes with Assessments	\$394
Tax Year	2024

**Additional Features:**

**Driving Directions:**

Take Highway 18 East to Anna Lake Road, Take Anna Lake road all the way toward the end and then stay left to property on left. You will go through another property to reach the pole building- this is an Easement



Listed By:  
Lakes Family Real Estate/Otter Tail Real Estate

Affinity Real Estate Inc. participates in the Regional Multiple Listing Service of Minnesota, Inc Broker Reciprocity (sm) program, allowing us to display other broker's listings on our website. All properties are subject to prior sale, change or withdrawal.



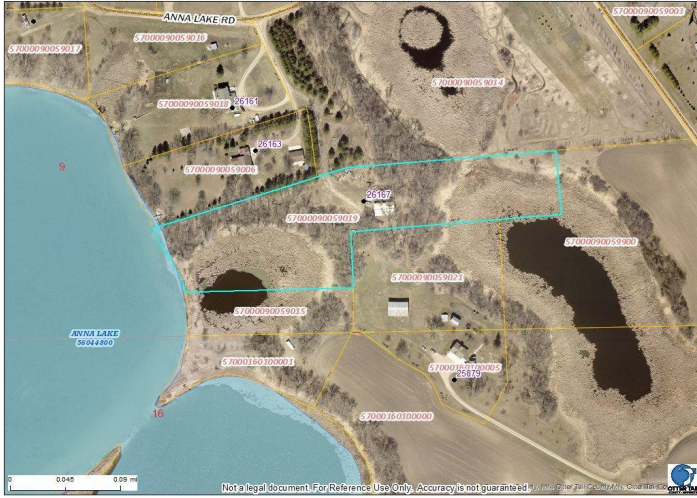
Call Affinity Real Estate

**218-237-3333**

[info@affinityrealestate.com](mailto:info@affinityrealestate.com)



Affinity Real Estate - 600 Park Avenue South - Park Rapids MN 56470



website: [www.AffinityRealEstate.com](http://www.AffinityRealEstate.com) | email: [info@affinityrealestate.com](mailto:info@affinityrealestate.com) | office: 218-237-3333 | fax:218-237-3377



**\$157,900**  
MLS 6696135 Lake Land  
26167 Anna Lake Road  
Underwood MN 56586