



MLS 6696152 Land

\$40,000

2.66 Acres
Raw Land

XXXX3 Swan Boulevard
Pelican Rapids MN 56572

Status: Active

Description:

Build your dream right here in Pelican Rapids. Enjoy easy access to nearby lakes, trails, and all the recreational activities this scenic area has to offer. Whether you are looking to build now or invest in the future, this lot provides privacy and convenience. Pelican Rapids has many local shops and eateries to indulge in all year long and they are just a quick trip to town.

Additional Details:

Lot Acres	2.66
Lot Dimensions	Irregular
School District	548
Taxes	\$762
Taxes with Assessments	\$762
Tax Year	2025

Additional Features:

Driving Directions:

From Pelican Rapids head West on 108 1 mile. Property will be on the South side.



Listed By:
RE/MAX Advantage Plus

Affinity Real Estate Inc. participates in the Regional Multiple Listing Service of Minnesota, Inc Broker Reciprocity (sm) program, allowing us to display other broker's listings on our website. All properties are subject to prior sale, change or withdrawal.



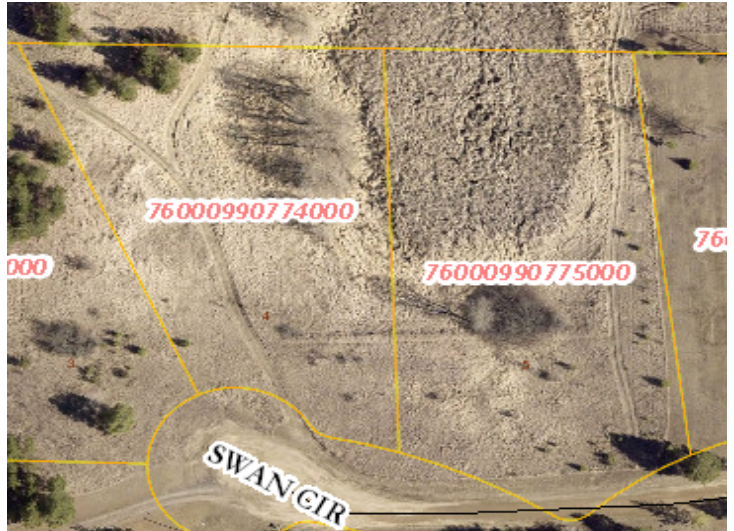
Call Affinity Real Estate

218-237-3333

info@affinityrealestate.com



Affinity Real Estate - 600 Park Avenue South - Park Rapids MN 56470



website: www.AffinityRealEstate.com | email: info@affinityrealestate.com | office: 218-237-3333 | fax: 218-237-3377



\$40,000
MLS 6696152 Land
XXXX3 Swan Boulevard
Pelican Rapids MN 56572