



MLS 6696241 Residential

\$259,900

1,536 sq ft
3 bedrooms
1 baths

12863 170th Street
Park Rapids MN 56470

Status: Active

Description:

Discover the charm of this Park Rapids country home, nestled on over 6 acres. This inviting home features 3-bedrooms, 1-bathroom residence includes a remarkable 26 x 40 detached garage, well-insulated and equipped with heating, cooling, and a built-in bar for entertaining. An additional, spacious 40 x 60 quonset that offers versatile storage and hobby options and another 24 x 32 storage building. Experience tranquility and convenience in this delightful retreat!

Additional Details:

Year Built	1946
Lot Acres	6.4
Lot Dimensions	520x719x635x341
Garage Stalls	2
School District	309
Taxes	\$1,175
Taxes with Assessments	\$1,396
Tax Year	2025

Additional Features:

Basement: Block, Full **Fuel:** Propane **Garage:** 2 **Heat:** Forced Air **Sewer:** Septic System Compliant - Yes **Water:** Drilled **Air Conditioning:** Wall Unit(s)

Driving Directions:

From Park Rapids go West to County Road 28. Go left to 170th Street. Turn right. 1st drive on left.



Listed By:
Wolff & Simon Real Estate

Affinity Real Estate Inc. participates in the Regional Multiple Listing Service of Minnesota, Inc Broker Reciprocity (sm) program, allowing us to display other broker's listings on our website. All properties are subject to prior sale, change or withdrawal.



Call Affinity Real Estate

218-237-3333

info@affinityrealestate.com



Affinity Real Estate - 600 Park Avenue South - Park Rapids MN 56470



website: www.AffinityRealEstate.com | email: info@affinityrealestate.com | office: 218-237-3333 | fax: 218-237-3377



\$259,900
 MLS 6696241 Residential
 12863 170th Street
 Park Rapids MN 56470



website: www.AffinityRealEstate.com | email: info@affinityrealestate.com | office: 218-237-3333 | fax: 218-237-3377

Affinity
REAL ESTATE INC

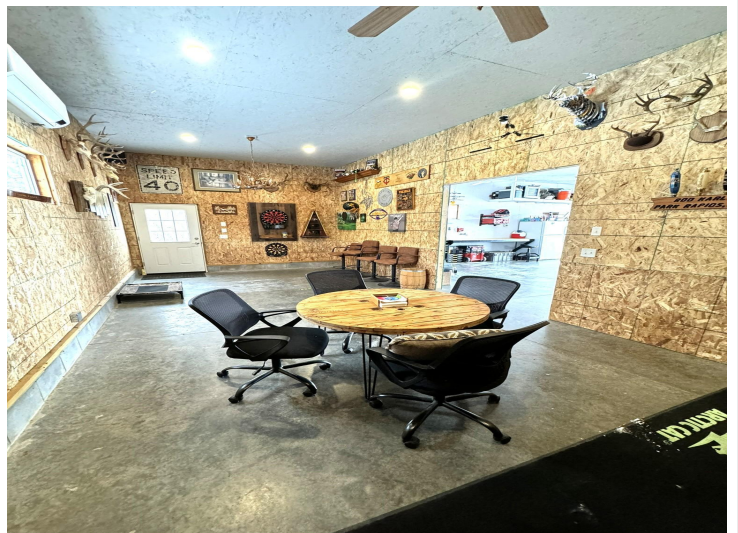
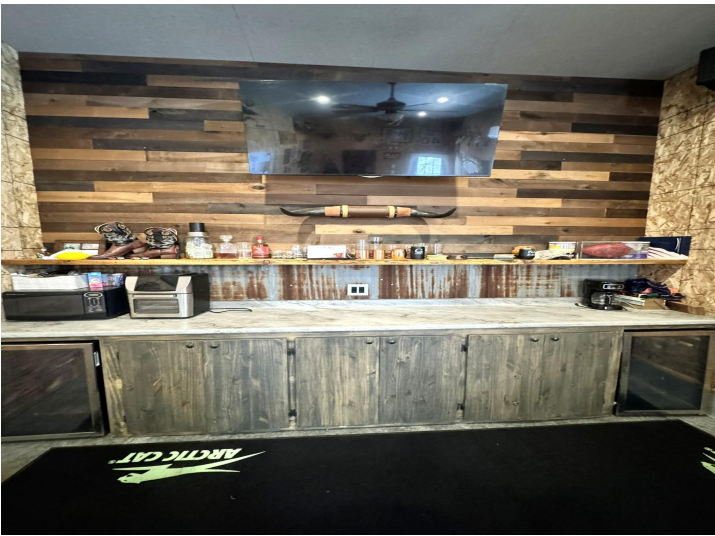
\$259,900
MLS 6696241 Residential
12863 170th Street
Park Rapids MN 56470



website: www.AffinityRealEstate.com | email: info@affinityrealestate.com | office: 218-237-3333 | fax: 218-237-3377

Affinity
REAL ESTATE INC

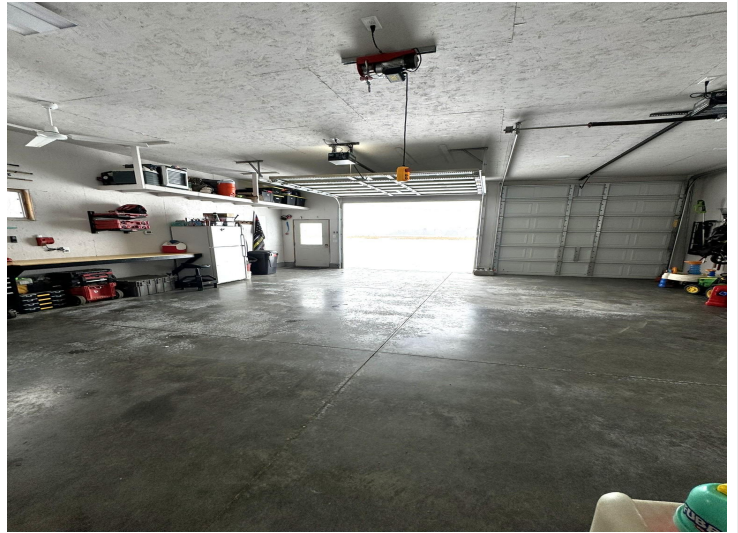
\$259,900
MLS 6696241 Residential
12863 170th Street
Park Rapids MN 56470



website: www.AffinityRealEstate.com | email: info@affinityrealestate.com | office: 218-237-3333 | fax: 218-237-3377

Affinity
REAL ESTATE INC

\$259,900
MLS 6696241 Residential
12863 170th Street
Park Rapids MN 56470



website: www.AffinityRealEstate.com | email: info@affinityrealestate.com | office: 218-237-3333 | fax: 218-237-3377

Affinity
REAL ESTATE INC

\$259,900
MLS 6696241 Residential
12863 170th Street
Park Rapids MN 56470



website: www.AffinityRealEstate.com | email: info@affinityrealestate.com | office: 218-237-3333 | fax: 218-237-3377



\$259,900
 MLS 6696241 Residential
 12863 170th Street
 Park Rapids MN 56470

website: www.AffinityRealEstate.com | email: info@affinityrealestate.com | office: 218-237-3333 | fax:218-237-3377



\$259,900

MLS 6696241 Residential
12863 170th Street
Park Rapids MN 56470