



MLS 6696604 Residential

**\$84,900**

1,176 sq ft  
3 bedrooms  
1 baths

13944 County Road 109  
Merrifield MN 56465

Status: Active

**Description:**

3 bedroom 1 bathroom only 2.58 acres. Close to lakes and resorts. The property is sold As-Is, Where-Is. Seller has no knowledge, buyer should perform their due diligence and make their own assessments.

**Additional Details:**

Year Built	1977
Lot Acres	2.48
Lot Dimensions	372x358x336x263
School District	182
Taxes	\$172
Taxes with Assessments	\$172
Tax Year	2023

**Additional Features:**

**Basement:** Partial, Unfinished **Fuel:** Natural Gas **Heat:** Forced Air **Sewer:** Private Sewer **Water:** Private **Air Conditioning:** Wall Unit(s)

**Driving Directions:**

Heading north on County Road 3 towards Crosslake, take a right on County Road 109 to property on left.



Listed By:  
Leading Edge Realty

Affinity Real Estate Inc. participates in the Regional Multiple Listing Service of Minnesota, Inc Broker Reciprocity (sm) program, allowing us to display other broker's listings on our website. All properties are subject to prior sale, change or withdrawal.



Call Affinity Real Estate

**218-237-3333**

[info@affinityrealestate.com](mailto:info@affinityrealestate.com)



Affinity Real Estate - 600 Park Avenue South - Park Rapids MN 56470



website: [www.AffinityRealEstate.com](http://www.AffinityRealEstate.com) | email: [info@affinityrealestate.com](mailto:info@affinityrealestate.com) | office: 218-237-3333 | fax:218-237-3377



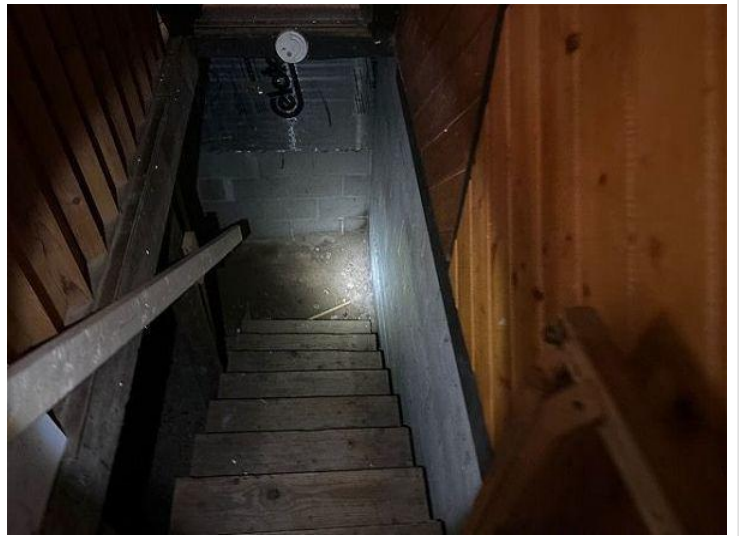
**\$84,900**  
MLS 6696604 Residential  
13944 County Road 109  
Merrifield MN 56465



website: [www.AffinityRealEstate.com](http://www.AffinityRealEstate.com) | email: [info@affinityrealestate.com](mailto:info@affinityrealestate.com) | office: 218-237-3333 | fax:218-237-3377



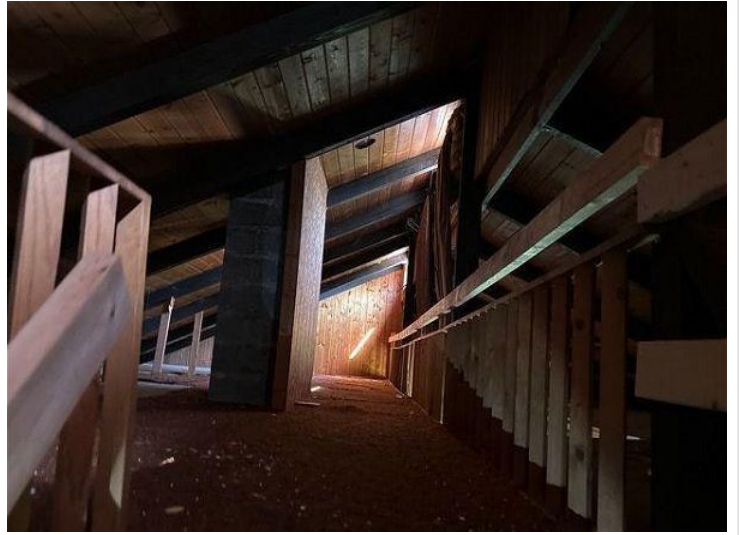
**\$84,900**  
MLS 6696604 Residential  
13944 County Road 109  
Merrifield MN 56465



website: [www.AffinityRealEstate.com](http://www.AffinityRealEstate.com) | email: [info@affinityrealestate.com](mailto:info@affinityrealestate.com) | office: 218-237-3333 | fax:218-237-3377



**\$84,900**  
MLS 6696604 Residential  
13944 County Road 109  
Merrifield MN 56465



website: [www.AffinityRealEstate.com](http://www.AffinityRealEstate.com) | email: [info@affinityrealestate.com](mailto:info@affinityrealestate.com) | office: 218-237-3333 | fax: 218-237-3377

**Affinity**  
REAL ESTATE INC

**\$84,900**  
MLS 6696604 Residential  
13944 County Road 109  
Merrifield MN 56465



website: [www.AffinityRealEstate.com](http://www.AffinityRealEstate.com) | email: [info@affinityrealestate.com](mailto:info@affinityrealestate.com) | office: 218-237-3333 | fax:218-237-3377



**\$84,900**  
MLS 6696604 Residential  
13944 County Road 109  
Merrifield MN 56465