



MLS 6696999 Lake Land

**\$200,000**

**Description:**

Ready for sunsets as the backdrop for your dream lake life? This waterfront property is a rare opportunity to own on Otter Tail Lake surrounded by calm waters of the marina. With direct access to this clear, blue lake - you can enjoy boating, fishing, kayaking or just relax by the shore. Mature trees, panoramic views & approx. 246 ft of shoreline make this lot a rare find. Bring your own builder!

**Additional Details:**

Lot Acres	0.36
Lot Dimensions	134x116x84x37x18x25x86
School District	542
Taxes	\$884
Taxes with Assessments	\$884
Tax Year	2025

**Additional Features:**

**Driving Directions:**

From Battle Lake, North on Highway 78, N on Blarney Beach Road to Blarney Beach Trail



Listed By:  
RE/MAX Results

Affinity Real Estate Inc. participates in the Regional Multiple Listing Service of Minnesota, Inc Broker Reciprocity (sm) program, allowing us to display other broker's listings on our website. All properties are subject to prior sale, change or withdrawal.



**Call Affinity Real Estate**

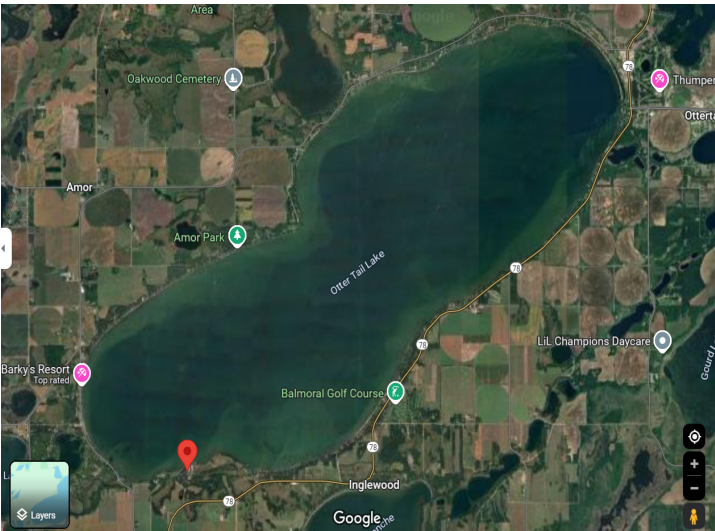
**218-237-3333**

**info@affinityrealestate.com**



**Affinity Real Estate - 600 Park Avenue South - Park Rapids MN 56470**





website: [www.AffinityRealEstate.com](http://www.AffinityRealEstate.com) | email: [info@affinityrealestate.com](mailto:info@affinityrealestate.com) | office: 218-237-3333 | fax: 218-237-3377



**\$200,000**  
 MLS 6696999 Lake Land  
 27371 Blarney Trail  
 Battle Lake MN 56515