



MLS 6697015 Land

\$39,500

2.6 Acres
Site Plan Filed

TBD Bear Tract Lane
Longville MN 56655

Status: Closed

Description:

Nearly 3 acre lot in the beautiful, private housing development called Bear Tracts. Great location, convenient to Longville and all our area lakes including the Woman Lake chain! Site evaluation completed with multiple building sites on this lot. Very loose covenants and restrictions and no association dues! Lot 4 being one of the nicest lots in this development at a very reasonable price!

Additional Details:

Lot Acres	2.6
Lot Dimensions	283 x 427 x 274 x 384
School District	118
Taxes	\$148
Taxes with Assessments	\$148
Tax Year	2024

Additional Features:

Driving Directions:

From Longville S on State 84 approx 7 miles, right on County 11, then right on Island View Rd. to Bear Tract Lane



Listed By:
Bill Hansen Realty/Longville

Affinity Real Estate Inc. participates in the Regional Multiple Listing Service of Minnesota, Inc Broker Reciprocity (sm) program, allowing us to display other broker's listings on our website. All properties are subject to prior sale, change or withdrawal.



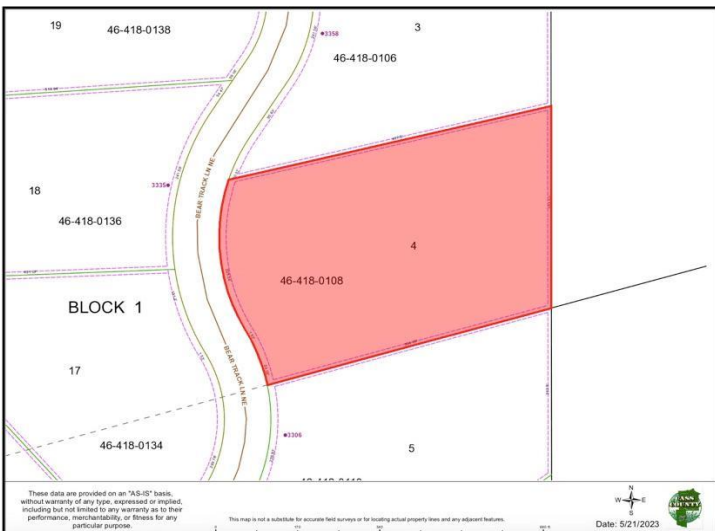
Call Affinity Real Estate

218-237-3333

info@affinityrealestate.com



Affinity Real Estate - 600 Park Avenue South - Park Rapids MN 56470



website: www.AffinityRealEstate.com | email: info@affinityrealestate.com | office: 218-237-3333 | fax: 218-237-3377



\$39,500
 MLS 6697015 Land
 TBD Bear Tract Lane
 Longville MN 56655