



MLS 6697203 Lake Home

\$2,399,000

3,902 sq ft
4 bedrooms
3 baths

7436 Christy Drive
Nisswa MN 56468

Waterfront: Upper Gull

Status: Active

Description:

****Turnkey Luxury on Gull Lake!****

Your perfect lakefront escape is ready and waiting. This newly constructed home on Gull Lake has been thoughtfully designed and fully finished; every detail has been meticulously planned for you! All you need to do is move in and start enjoying the sandy lakeshore on the Gull Chain.

Soak in breathtaking lake views from the floor-to-ceiling windows and the grand staircase overlooking the water. Enjoy the open floor plan featuring 9-foot ceilings, a gas stone fireplace, and box vaults. The kitchen boasts a large center island ideal for entertaining, along with a walk-in pantry and granite countertops.

You'll love the lower level, which includes a sunlit family room, two additional bedrooms, and a versatile flex/5th bedroom. There's plenty of space for your lake toys in the spacious 30' x 50' heated garage, complete with floor drains and a sink.

Whether you're entertaining friends or spending quiet weekends with family, this home is designed for effortless living and unforgettable memories! Don't miss your chance to own a slice of Gull Lake paradise, just in time for summer! Still plenty of room to put up another detached garage on this large lot. The driveway will be asphalted, the yard will be sodded, and irrigation will be installed before closing.

Additional Details:

Year Built	2024
Lot Acres	0.93
Lot Dimensions	178x328x100x353
Garage Stalls	4
School District	186
Taxes	\$3,432
Taxes with Assessments	\$3,432
Tax Year	2025

Broker Reciprocity Listed By: **Velmont, Fred** **Equal Housing Opportunity** **Garage: 4** **Heat: Forced Air** **Water: Submersible - 4 Inch, Drilled, Private, Well** **Central Air** **MLS** **Equal Housing Opportunity**

Service of Minors Affinity Real Estate Inc. participates in the Regional Multiple Listing Service of Minnesota, Inc Broker Reciprocity (sm) program, allowing us to display other broker's listings on our website. All properties are subject to prior sale, change or withdrawal.

Take Hwy 371 North to County Road 29, take a left, in 2.4 miles turn left onto Christy Drive, property is on the left.



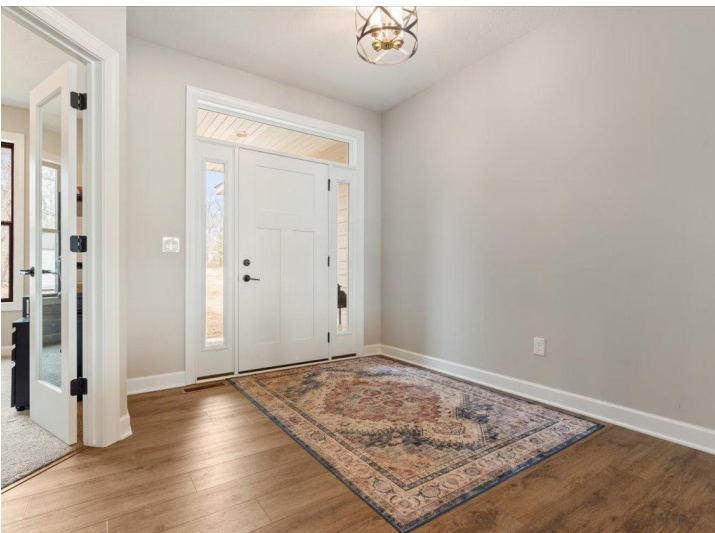
Call Affinity Real Estate

218-237-3333

info@affinityrealestate.com



Affinity Real Estate - 600 Park Avenue South - Park Rapids MN 56470



website: www.AffinityRealEstate.com | email: info@affinityrealestate.com | office: 218-237-3333 | fax: 218-237-3377

Affinity
REAL ESTATE INC

\$2,399,000

MLS 6697203 Lake Home
7436 Christy Drive
Nisswa MN 56468



website: www.AffinityRealEstate.com | email: info@affinityrealestate.com | office: 218-237-3333 | fax: 218-237-3377

Affinity
REAL ESTATE INC

\$2,399,000

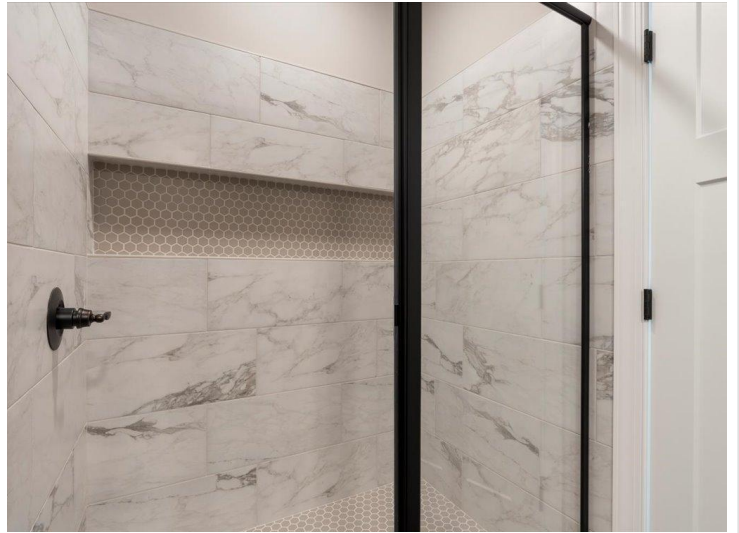
MLS 6697203 Lake Home
7436 Christy Drive
Nisswa MN 56468



website: www.AffinityRealEstate.com | email: info@affinityrealestate.com | office: 218-237-3333 | fax: 218-237-3377



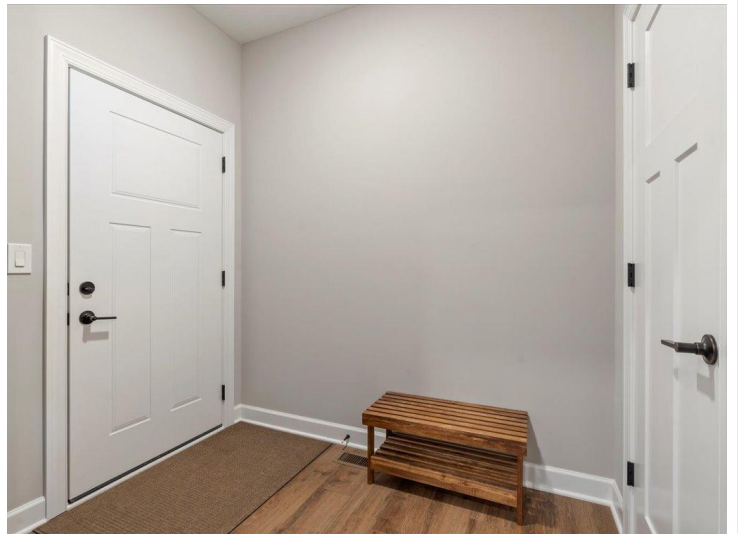
\$2,399,000
MLS 6697203 Lake Home
7436 Christy Drive
Nisswa MN 56468



website: www.AffinityRealEstate.com | email: info@affinityrealestate.com | office: 218-237-3333 | fax: 218-237-3377



\$2,399,000
 MLS 6697203 Lake Home
 7436 Christy Drive
 Nisswa MN 56468



website: www.AffinityRealEstate.com | email: info@affinityrealestate.com | office: 218-237-3333 | fax: 218-237-3377



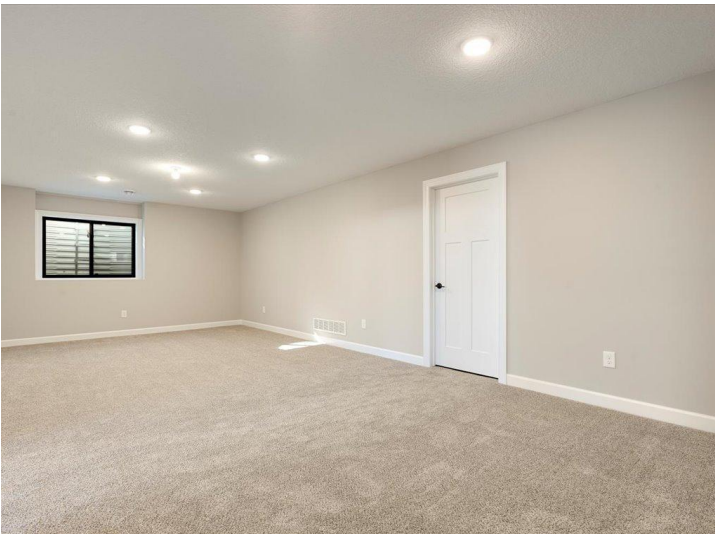
\$2,399,000
MLS 6697203 Lake Home
7436 Christy Drive
Nisswa MN 56468



website: www.AffinityRealEstate.com | email: info@affinityrealestate.com | office: 218-237-3333 | fax: 218-237-3377



\$2,399,000
 MLS 6697203 Lake Home
 7436 Christy Drive
 Nisswa MN 56468



website: www.AffinityRealEstate.com | email: info@affinityrealestate.com | office: 218-237-3333 | fax: 218-237-3377



\$2,399,000

MLS 6697203 Lake Home
7436 Christy Drive
Nisswa MN 56468



website: www.AffinityRealEstate.com | email: info@affinityrealestate.com | office: 218-237-3333 | fax: 218-237-3377



\$2,399,000
 MLS 6697203 Lake Home
 7436 Christy Drive
 Nisswa MN 56468



website: www.AffinityRealEstate.com | email: info@affinityrealestate.com | office: 218-237-3333 | fax: 218-237-3377



\$2,399,000
 MLS 6697203 Lake Home
 7436 Christy Drive
 Nisswa MN 56468



website: www.AffinityRealEstate.com | email: info@affinityrealestate.com | office: 218-237-3333 | fax: 218-237-3377

Affinity
REAL ESTATE INC

\$2,399,000
MLS 6697203 Lake Home
7436 Christy Drive
Nisswa MN 56468



website: www.AffinityRealEstate.com | email: info@affinityrealestate.com | office: 218-237-3333 | fax:218-237-3377



\$2,399,000
MLS 6697203 Lake Home
7436 Christy Drive
Nisswa MN 56468

website: www.AffinityRealEstate.com | email: info@affinityrealestate.com | office: 218-237-3333 | fax:218-237-3377



\$2,399,000

MLS 6697203 Lake Home
7436 Christy Drive
Nisswa MN 56468