



MLS 6697325 Lake Land

**\$399,000**

**Description:**

Parcel H is a 2.5+/- ACRES and has 268 ft of SHORELINE ON SERENE CRYSTAL LAKE/ Bring your builder to this level, lightly wooded lot and enjoy lake life. Crystal Lake is a 1,317 acre lake connected to Lizzie Lake by a navigable culvert. The maximum depth is 55 feet and 51% of the lake is 15 feet deep or less. Walleye, northern pike and largemouth bass are the primary game fish in the lake. Additional parcels available.

**Additional Details:**

Lot Acres	2.5
Lot Dimensions	2.5
School District	548
Taxes	\$999
Taxes with Assessments	\$999
Tax Year	2023

**Additional Features:**

**Driving Directions:**

hwy 59 to hwy 31 to 460th



Listed By:  
Re/Max Lakes Region

Affinity Real Estate Inc. participates in the Regional Multiple Listing Service of Minnesota, Inc Broker Reciprocity (sm) program, allowing us to display other broker's listings on our website. All properties are subject to prior sale, change or withdrawal.



**Call Affinity Real Estate**

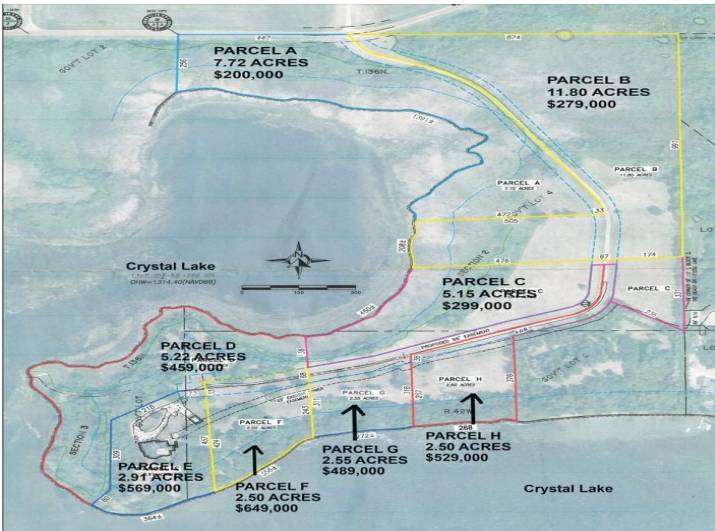
**218-237-3333**

**info@affinityrealestate.com**



**Affinity Real Estate - 600 Park Avenue South - Park Rapids MN 56470**





website: [www.AffinityRealEstate.com](http://www.AffinityRealEstate.com) | email: [info@affinityrealestate.com](mailto:info@affinityrealestate.com) | office: 218-237-3333 | fax: 218-237-3377

**Affinity**  
REAL ESTATE INC

**\$399,000**

MLS 6697325 Lake Land  
26140 Crystal Point Drive  
Parcel H  
Pelican Rapids MN 56572





website: [www.AffinityRealEstate.com](http://www.AffinityRealEstate.com) | email: [info@affinityrealestate.com](mailto:info@affinityrealestate.com) | office: 218-237-3333 | fax: 218-237-3377



**\$399,000**

MLS 6697325 Lake Land  
26140 Crystal Point Drive  
Parcel H  
Pelican Rapids MN 56572





website: [www.AffinityRealEstate.com](http://www.AffinityRealEstate.com) | email: [info@affinityrealestate.com](mailto:info@affinityrealestate.com) | office: 218-237-3333 | fax: 218-237-3377



**\$399,000**

MLS 6697325 Lake Land  
26140 Crystal Point Drive  
Parcel H  
Pelican Rapids MN 56572





website: [www.AffinityRealEstate.com](http://www.AffinityRealEstate.com) | email: [info@affinityrealestate.com](mailto:info@affinityrealestate.com) | office: 218-237-3333 | fax: 218-237-3377



**\$399,000**

MLS 6697325 Lake Land  
26140 Crystal Point Drive  
Parcel H  
Pelican Rapids MN 56572