



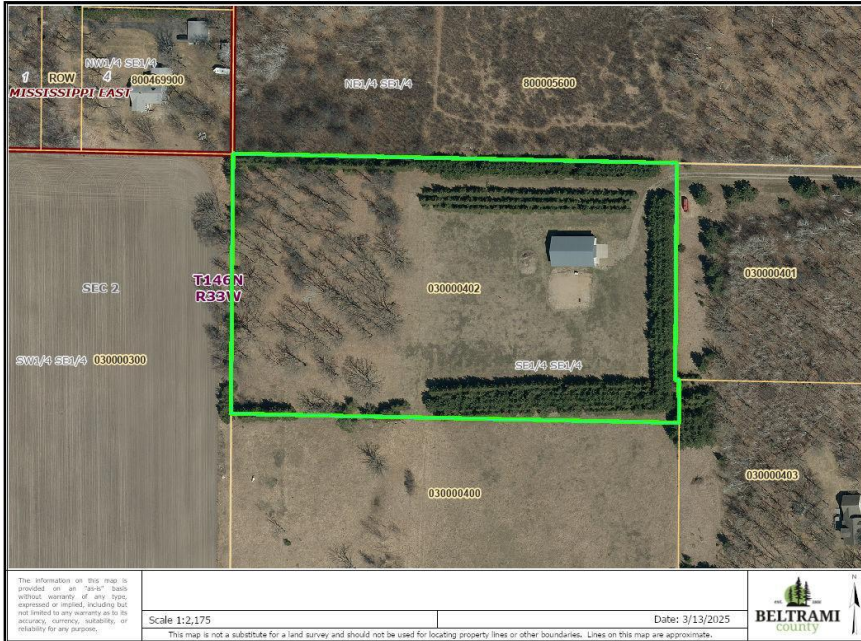
MLS 6697354 Residential

**\$250,000**

0 sq ft  
0 bedrooms  
0 baths

2537 Brinkman Drive  
Bemidji MN 56601

Status: Pending



**Description:**

Pended before print

**Additional Details:**

Year Built	2009
Lot Acres	6.01
Lot Dimensions	396x660x396x666
Garage Stalls	2
School District	31
Taxes	\$1,148
Taxes with Assessments	\$1,148
Tax Year	2025

**Additional Features:**

**Basement:** Slab **Fuel:** Electric **Garage:** 2 **Heat:** Radiant Floor **Sewer:** None **Water:** Submersible - 4 Inch **Air Conditioning:** None

**Driving Directions:**

1st St to left on Lake Ave, then right on Power Dam Rd, left on Brinkman Dr to property on the left.



Listed By:  
Realty Experts, LLC

Affinity Real Estate Inc. participates in the Regional Multiple Listing Service of Minnesota, Inc Broker Reciprocity (sm) program, allowing us to display other broker's listings on our website. All properties are subject to prior sale, change or withdrawal.



Call Affinity Real Estate

**218-237-3333**

[info@affinityrealestate.com](mailto:info@affinityrealestate.com)



Affinity Real Estate - 600 Park Avenue South - Park Rapids MN 56470

