



MLS 6697421 Land

\$132,000

0.05 Acres

Other

25296 S Melissa Drive #9
Detroit Lakes MN 56501

Status: Pending

Description:

(TO-BE-BUILT) TIRED OF HAULING THAT BOAT?! This 30x64 to-be-built storage unit conveniently located by Lake Melissa and minutes from all the fun to be found in Detroit Lakes can take care of that for you! With plenty of room for all your toys, tools, and vehicles, you can spend more time doing what you come to lake country to do - be on and in the water, soaking up rays, and enjoying lake living. Here's a chance to stop paying rental and boat storage fees and own your storage space. Specs: post type building, 3 Ply Columns, 2x6 – 8' OC, factory engineered trusses 4' OC (42-4-6 loading), 12' sidewalls with vaulted interior ceiling approx. 14'-8" at center, high tensile steel exterior, 24" soffit system w/ vented ridge, 12'x14' OH door w/ opener, (1) 3' service door, 4" concrete floor w/ center drain, 2x8 treated skirt board, 2x12 double top plate, 2x4 roof purlins 24" OC.

Additional Details:

Lot Acres	0.05
Lot Dimensions	30x70
School District	22
Taxes	\$50
Taxes with Assessments	\$50
Tax Year	2025

Additional Features:

Driving Directions:

From Detroit Lakes on US-59 S for 6 miles. Turn right onto 110th St, turn right onto Co Hwy 17. Turn right, property will be on the left.



Listed By:
RE/MAX Advantage Plus

Affinity Real Estate Inc. participates in the Regional Multiple Listing Service of Minnesota, Inc Broker Reciprocity (sm) program, allowing us to display other broker's listings on our website. All properties are subject to prior sale, change or withdrawal.



Call Affinity Real Estate

218-237-3333

info@affinityrealestate.com



Affinity Real Estate - 600 Park Avenue South - Park Rapids MN 56470



website: www.AffinityRealEstate.com | email: info@affinityrealestate.com | office: 218-237-3333 | fax: 218-237-3377



\$132,000
 MLS 6697421 Land
 25296 S Melissa Drive #9
 Detroit Lakes MN 56501



website: www.AffinityRealEstate.com | email: info@affinityrealestate.com | office: 218-237-3333 | fax: 218-237-3377



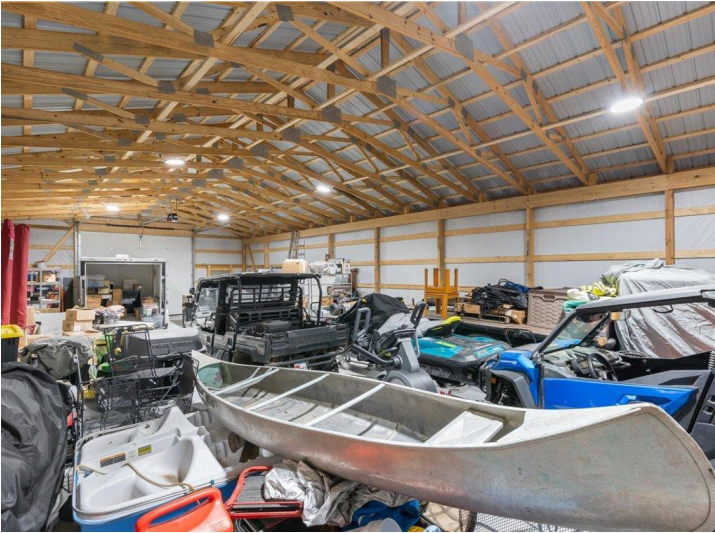
\$132,000
 MLS 6697421 Land
 25296 S Melissa Drive #9
 Detroit Lakes MN 56501



website: www.AffinityRealEstate.com | email: info@affinityrealestate.com | office: 218-237-3333 | fax: 218-237-3377



\$132,000
 MLS 6697421 Land
 25296 S Melissa Drive #9
 Detroit Lakes MN 56501



website: www.AffinityRealEstate.com | email: info@affinityrealestate.com | office: 218-237-3333 | fax: 218-237-3377



\$132,000
MLS 6697421 Land
25296 S Melissa Drive #9
Detroit Lakes MN 56501