



MLS 6697490 Lake Home

**\$499,900**

2,181 sq ft  
4 bedrooms  
3 baths

26508 County 4  
Park Rapids MN 56470

Waterfront: Pickerel

Status: Active

#### Description:

Discover this enchanting Park Rapids country home, where comfort meets nature. This stunning residence boasts 4 spacious bedrooms and 3 beautifully appointed baths, an open floor plan for entertaining and highlighted by a charming stone fireplace that invites cozy gatherings. The master suite offers a luxurious en-suite bathroom, and large walk-in closet. Nestled on over 11 acres of breathtaking mixed hardwoods and towering pines, this property offers picturesque views of the serene Pickerel Lake, making it a true nature lover's paradise. The property also features an impressive 40 x 51 attached garage, complete with floor drains and heated by either propane or in-floor heat, ensuring year-round functionality. Furthermore, you'll find a substantial 54 x 80 garage equipped with a lean-to, perfect for your hobbies or storage needs, as well as a charming chicken coop for those who dream of farm-fresh eggs. Embrace the tranquility and beauty of this idyllic retreat! Call for an appointment today!

#### Additional Details:

Year Built	2004
Lot Acres	11.7
Lot Dimensions	irr
Garage Stalls	8
School District	309
Taxes	\$3,294
Taxes with Assessments	\$3,504
Tax Year	2024

#### Additional Features:

**Basement:** Wood **Fuel:** Propane, Wood **Garage:** 8 **Heat:** Forced Air, Fireplace(s), Radiant Floor **Sewer:** Septic System Compliant - Yes  
**Water:** Drilled **Air Conditioning:** Central Air

#### Driving Directions:

From Park Rapids, go East on Highway 34 to County 4. Take County 4 to the property. Will be on the right.



Listed By:  
Wolff & Simon Real Estate

Affinity Real Estate Inc. participates in the Regional Multiple Listing Service of Minnesota, Inc Broker Reciprocity (sm) program, allowing us to display other broker's listings on our website. All properties are subject to prior sale, change or withdrawal.



**Call Affinity Real Estate**

**218-237-3333**

**info@affinityrealestate.com**



**Affinity Real Estate - 600 Park Avenue South - Park Rapids MN 56470**





website: [www.AffinityRealEstate.com](http://www.AffinityRealEstate.com) | email: [info@affinityrealestate.com](mailto:info@affinityrealestate.com) | office: 218-237-3333 | fax: 218-237-3377

**Affinity**  
REAL ESTATE INC

**\$499,900**  
MLS 6697490 Lake Home  
26508 County 4  
Park Rapids MN 56470





website: [www.AffinityRealEstate.com](http://www.AffinityRealEstate.com) | email: [info@affinityrealestate.com](mailto:info@affinityrealestate.com) | office: 218-237-3333 | fax: 218-237-3377

**Affinity**  
REAL ESTATE INC

**\$499,900**  
MLS 6697490 Lake Home  
26508 County 4  
Park Rapids MN 56470





website: [www.AffinityRealEstate.com](http://www.AffinityRealEstate.com) | email: [info@affinityrealestate.com](mailto:info@affinityrealestate.com) | office: 218-237-3333 | fax: 218-237-3377

**Affinity**  
REAL ESTATE INC

**\$499,900**  
MLS 6697490 Lake Home  
26508 County 4  
Park Rapids MN 56470



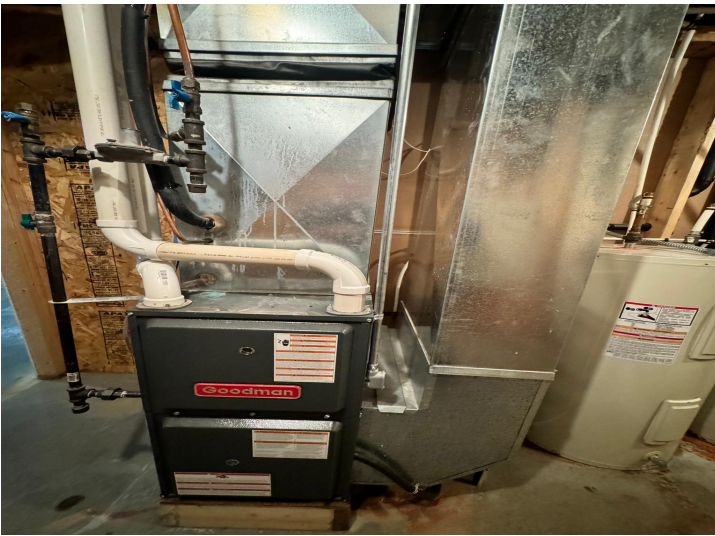


website: [www.AffinityRealEstate.com](http://www.AffinityRealEstate.com) | email: [info@affinityrealestate.com](mailto:info@affinityrealestate.com) | office: 218-237-3333 | fax: 218-237-3377

**Affinity**  
REAL ESTATE INC

**\$499,900**  
MLS 6697490 Lake Home  
26508 County 4  
Park Rapids MN 56470



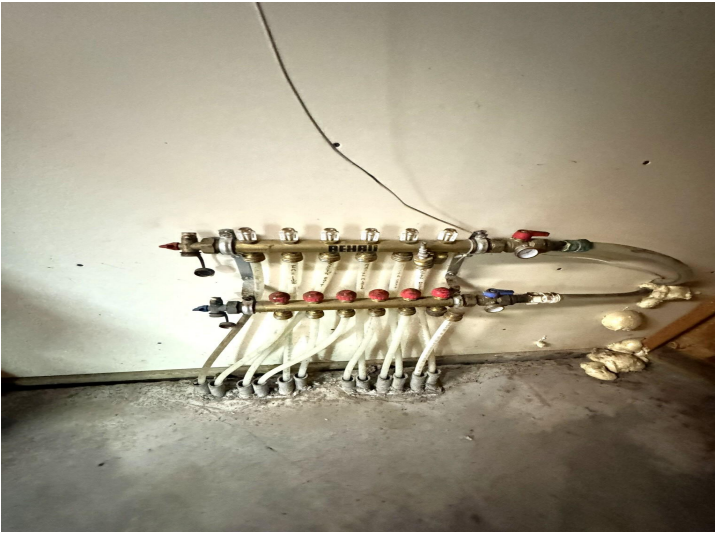


website: [www.AffinityRealEstate.com](http://www.AffinityRealEstate.com) | email: [info@affinityrealestate.com](mailto:info@affinityrealestate.com) | office: 218-237-3333 | fax: 218-237-3377



**\$499,900**  
 MLS 6697490 Lake Home  
 26508 County 4  
 Park Rapids MN 56470





website: [www.AffinityRealEstate.com](http://www.AffinityRealEstate.com) | email: [info@affinityrealestate.com](mailto:info@affinityrealestate.com) | office: 218-237-3333 | fax: 218-237-3377



**\$499,900**  
 MLS 6697490 Lake Home  
 26508 County 4  
 Park Rapids MN 56470



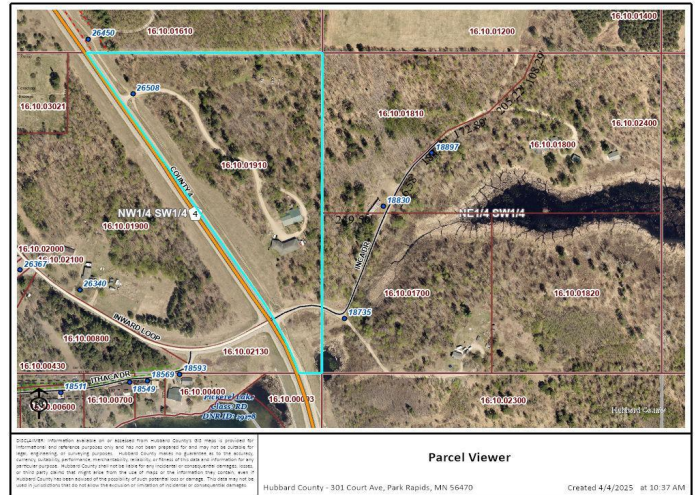


website: [www.AffinityRealEstate.com](http://www.AffinityRealEstate.com) | email: [info@affinityrealestate.com](mailto:info@affinityrealestate.com) | office: 218-237-3333 | fax: 218-237-3377

**Affinity**  
REAL ESTATE INC

**\$499,900**  
MLS 6697490 Lake Home  
26508 County 4  
Park Rapids MN 56470





website: [www.AffinityRealEstate.com](http://www.AffinityRealEstate.com) | email: [info@affinityrealestate.com](mailto:info@affinityrealestate.com) | office: 218-237-3333 | fax: 218-237-3377



**\$499,900**  
MLS 6697490 Lake Home  
26508 County 4  
Park Rapids MN 56470



website: [www.AffinityRealEstate.com](http://www.AffinityRealEstate.com) | email: [info@affinityrealestate.com](mailto:info@affinityrealestate.com) | office: 218-237-3333 | fax:218-237-3377



**\$499,900**

MLS 6697490 Lake Home  
26508 County 4  
Park Rapids MN 56470



website: [www.AffinityRealEstate.com](http://www.AffinityRealEstate.com) | email: [info@affinityrealestate.com](mailto:info@affinityrealestate.com) | office: 218-237-3333 | fax: 218-237-3377



**\$499,900**

MLS 6697490 Lake Home  
26508 County 4  
Park Rapids MN 56470



website: [www.AffinityRealEstate.com](http://www.AffinityRealEstate.com) | email: [info@affinityrealestate.com](mailto:info@affinityrealestate.com) | office: 218-237-3333 | fax:218-237-3377



**\$499,900**

MLS 6697490 Lake Home  
26508 County 4  
Park Rapids MN 56470