



MLS 6697680 Residential

**\$350,000**

2,352 sq ft  
3 bedrooms  
2 baths

3483 State 210  
Pillager MN 56473

Status: Active

#### Description:

Welcome to Pillager, MN! If you're looking for a large backyard overlooking Pillager Creek and woods that's close to town, you've found it. This home provides a great main level featuring kitchen, dining room, living room, sunroom, 2 bedrooms, full bathroom, and laundry. Lower level has ample space for additional bedrooms, office, workshop, recreation room, workshop or whatever you may need. An attached garage, detached garage, and 2 sheds provide plenty of parking space, storage, or a workshop space. This property is located close to the Pillsbury State Forest, MN's first state forest, with thousands of acres of public land, trails for snowmobiles and horses, hunting & fishing opportunities, and a rich natural landscape. Also nearby is Gull Lake, Pillager Lake, Crow Wing River, and many other recreational opportunities including golf, dining, and more. Schedule your showing today!

#### Additional Details:

Year Built	1972
Lot Acres	3.26
Lot Dimensions	331x406x320x331
Garage Stalls	4
School District	116
Taxes	\$1,514
Taxes with Assessments	\$1,580
Tax Year	2025

#### Additional Features:

**Basement:** Block, Finished, Full, Walkout **Fuel:** Natural Gas **Garage:** 4 **Heat:** Forced Air, Wood Stove **Sewer:** Private Sewer, Tank with Drainage Field **Water:** Private, Well **Air Conditioning:** Wall Unit(s)

#### Driving Directions:

West of Brainerd/Baxter on 210. Property on south side.



Listed By:  
Edina Realty, Inc.

Affinity Real Estate Inc. participates in the Regional Multiple Listing Service of Minnesota, Inc Broker Reciprocity (sm) program, allowing us to display other broker's listings on our website. All properties are subject to prior sale, change or withdrawal.



Call Affinity Real Estate

**218-237-3333**

[info@affinityrealestate.com](mailto:info@affinityrealestate.com)



Affinity Real Estate - 600 Park Avenue South - Park Rapids MN 56470





website: [www.AffinityRealEstate.com](http://www.AffinityRealEstate.com) | email: [info@affinityrealestate.com](mailto:info@affinityrealestate.com) | office: 218-237-3333 | fax: 218-237-3377

**Affinity**  
REAL ESTATE INC

**\$350,000**  
MLS 6697680 Residential  
3483 State 210  
Pillager MN 56473





website: [www.AffinityRealEstate.com](http://www.AffinityRealEstate.com) | email: [info@affinityrealestate.com](mailto:info@affinityrealestate.com) | office: 218-237-3333 | fax: 218-237-3377

**Affinity**  
REAL ESTATE INC

**\$350,000**  
MLS 6697680 Residential  
3483 State 210  
Pillager MN 56473





website: [www.AffinityRealEstate.com](http://www.AffinityRealEstate.com) | email: [info@affinityrealestate.com](mailto:info@affinityrealestate.com) | office: 218-237-3333 | fax: 218-237-3377

**Affinity**  
REAL ESTATE INC

**\$350,000**  
MLS 6697680 Residential  
3483 State 210  
Pillager MN 56473





website: [www.AffinityRealEstate.com](http://www.AffinityRealEstate.com) | email: [info@affinityrealestate.com](mailto:info@affinityrealestate.com) | office: 218-237-3333 | fax: 218-237-3377



**\$350,000**  
 MLS 6697680 Residential  
 3483 State 210  
 Pillager MN 56473





website: [www.AffinityRealEstate.com](http://www.AffinityRealEstate.com) | email: [info@affinityrealestate.com](mailto:info@affinityrealestate.com) | office: 218-237-3333 | fax: 218-237-3377



**\$350,000**  
 MLS 6697680 Residential  
 3483 State 210  
 Pillager MN 56473



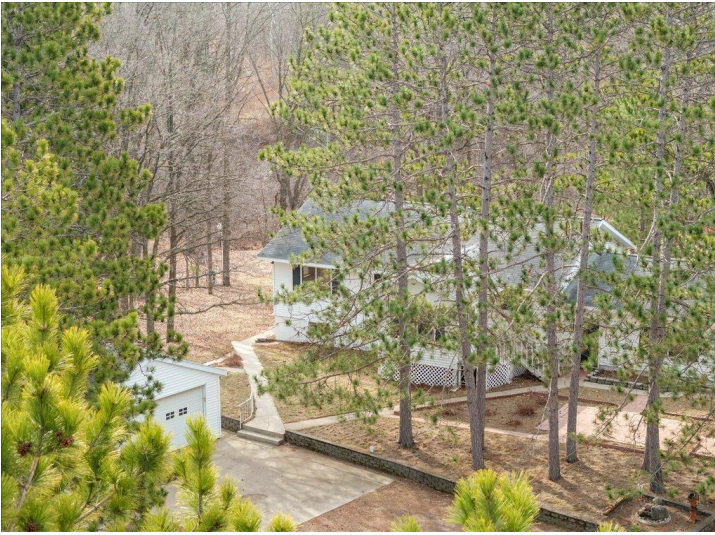


website: [www.AffinityRealEstate.com](http://www.AffinityRealEstate.com) | email: [info@affinityrealestate.com](mailto:info@affinityrealestate.com) | office: 218-237-3333 | fax: 218-237-3377



**\$350,000**  
 MLS 6697680 Residential  
 3483 State 210  
 Pillager MN 56473



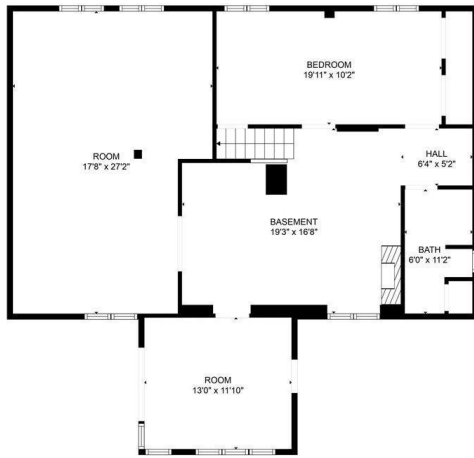


website: [www.AffinityRealEstate.com](http://www.AffinityRealEstate.com) | email: [info@affinityrealestate.com](mailto:info@affinityrealestate.com) | office: 218-237-3333 | fax: 218-237-3377

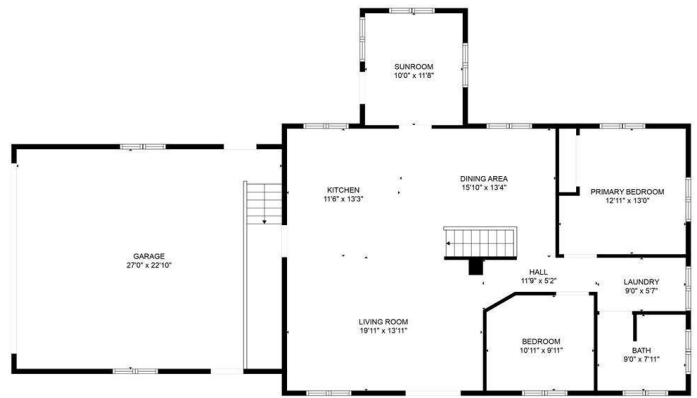


**\$350,000**  
 MLS 6697680 Residential  
 3483 State 210  
 Pillager MN 56473





FLOOR PLAN CREATED BY CUBICASA APP. MEASUREMENTS DEEMED HIGHLY RELIABLE BUT NOT GUARANTEED.



FLOOR PLAN CREATED BY CUBICASA APP. MEASUREMENTS DEEMED HIGHLY RELIABLE BUT NOT GUARANTEED.

website: [www.AffinityRealEstate.com](http://www.AffinityRealEstate.com) | email: [info@affinityrealestate.com](mailto:info@affinityrealestate.com) | office: 218-237-3333 | fax: 218-237-3377



**\$350,000**

MLS 6697680 Residential  
3483 State 210  
Pillager MN 56473