



MLS 6698792 Land

\$55,000

5.38 Acres
Raw Land

TBD Cattail Lane
Bemidji MN 56601

Status: Active

Description:

Build your dream home here! Just minutes to Bemidji, several lakes, and Greenwood Golf Course is this 5.38-acre lot with rolling hills, trees, and just off paved roads! This property has a lot to offer! Come take a look!

Additional Details:

Lot Acres	5.38
Lot Dimensions	468x495
School District	31
Taxes	\$166
Taxes with Assessments	\$166
Tax Year	2025

Additional Features:

Driving Directions:

Roosevelt Rd for 7.4 miles. Left on Swenson Rd SE. Right on Cattail LN E, property on right, look for sign.



Listed By:
218 Real Estate

Affinity Real Estate Inc. participates in the Regional Multiple Listing Service of Minnesota, Inc Broker Reciprocity (sm) program, allowing us to display other broker's listings on our website. All properties are subject to prior sale, change or withdrawal.



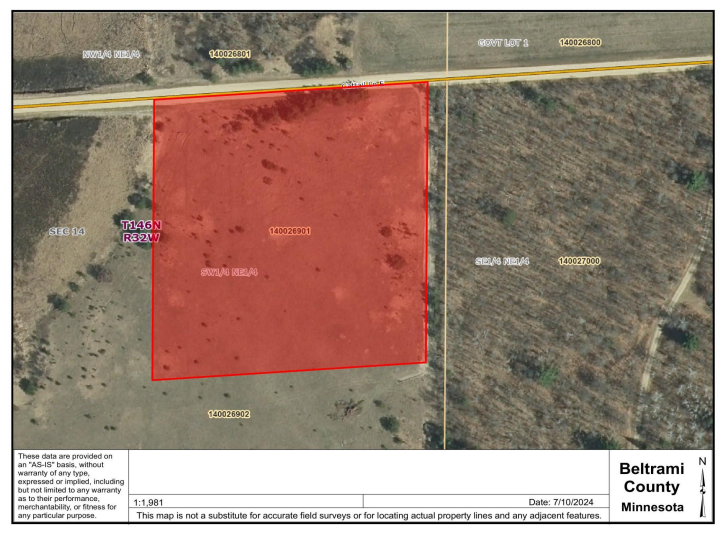
Call Affinity Real Estate

218-237-3333

info@affinityrealestate.com



Affinity Real Estate - 600 Park Avenue South - Park Rapids MN 56470



website: www.AffinityRealEstate.com | email: info@affinityrealestate.com | office: 218-237-3333 | fax: 218-237-3377



\$55,000
 MLS 6698792 Land
 TBD Cattail Lane
 Bemidji MN 56601



website: www.AffinityRealEstate.com | email: info@affinityrealestate.com | office: 218-237-3333 | fax:218-237-3377



\$55,000
MLS 6698792 Land
TBD Cattail Lane
Bemidji MN 56601