



MLS 6698982 Residential

\$749,900

3,040 sq ft
2 bedrooms
2 baths

4501 16th Avenue
Pine River MN 56474

Status: Coming Soon

Description:

Don't miss this two bedroom, two bath home located just north of Pequot Lakes on 100 acres. Home features an open floor plan, office area, four season porch, a full finished walkout basement, deck, an attached two car garage, an large 55 x 34 pole barn with an attached 34 x 20 heated/insulated garage, a 24 x 48 loafing barn, patio area and so much more. Enjoy great hunting, wildlife and lots of trails for walking or four wheelers on this hard to find 100 acre parcel. Set up a showing today.

Additional Details:

Year Built	1984
Lot Acres	100
Lot Dimensions	2620x1664
Garage Stalls	7
School District	2174
Taxes	\$1,182
Taxes with Assessments	\$1,248
Tax Year	2024

Additional Features:

Fuel: Propane **Heat:** Forced Air

Driving Directions:

From Pequot Lakes go North on Hwy 371 to Jenkins, take a left onto Lilac Street (also known as County Road 115), take the first left onto 16th Avenue SW to the property numbered 4501, which is on your right.



Listed By:
eXp Realty

Affinity Real Estate Inc. participates in the Regional Multiple Listing Service of Minnesota, Inc Broker Reciprocity (sm) program, allowing us to display other broker's listings on our website. All properties are subject to prior sale, change or withdrawal.



Call Affinity Real Estate

218-237-3333

info@affinityrealestate.com



Affinity Real Estate - 600 Park Avenue South - Park Rapids MN 56470



website: www.AffinityRealEstate.com | email: info@affinityrealestate.com | office: 218-237-3333 | fax: 218-237-3377

Affinity
REAL ESTATE INC

\$749,900
MLS 6698982 Residential
4501 16th Avenue
Pine River MN 56474



website: www.AffinityRealEstate.com | email: info@affinityrealestate.com | office: 218-237-3333 | fax:218-237-3377

Affinity
REAL ESTATE INC

\$749,900
MLS 6698982 Residential
4501 16th Avenue
Pine River MN 56474



website: www.AffinityRealEstate.com | email: info@affinityrealestate.com | office: 218-237-3333 | fax:218-237-3377

Affinity
REAL ESTATE INC

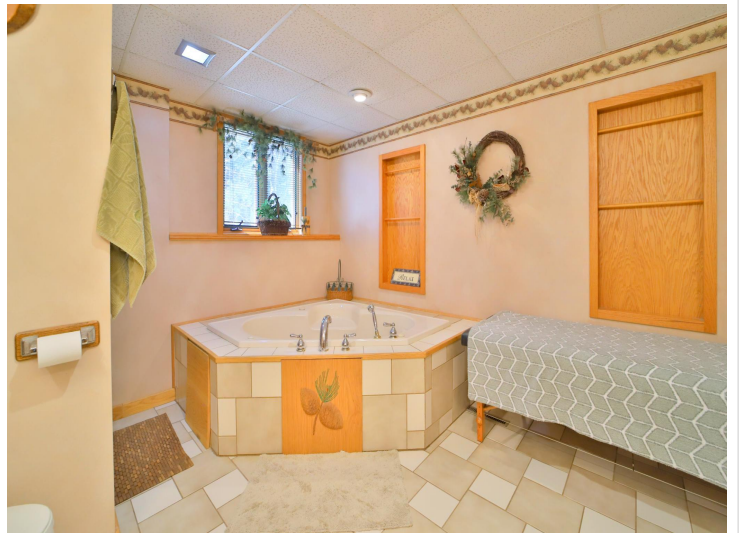
\$749,900
MLS 6698982 Residential
4501 16th Avenue
Pine River MN 56474



website: www.AffinityRealEstate.com | email: info@affinityrealestate.com | office: 218-237-3333 | fax:218-237-3377



\$749,900
MLS 6698982 Residential
4501 16th Avenue
Pine River MN 56474



website: www.AffinityRealEstate.com | email: info@affinityrealestate.com | office: 218-237-3333 | fax:218-237-3377

Affinity
REAL ESTATE INC

\$749,900
MLS 6698982 Residential
4501 16th Avenue
Pine River MN 56474



website: www.AffinityRealEstate.com | email: info@affinityrealestate.com | office: 218-237-3333 | fax: 218-237-3377

Affinity
REAL ESTATE INC

\$749,900
MLS 6698982 Residential
4501 16th Avenue
Pine River MN 56474



website: www.AffinityRealEstate.com | email: info@affinityrealestate.com | office: 218-237-3333 | fax:218-237-3377

Affinity
REAL ESTATE INC

\$749,900
MLS 6698982 Residential
4501 16th Avenue
Pine River MN 56474



website: www.AffinityRealEstate.com | email: info@affinityrealestate.com | office: 218-237-3333 | fax:218-237-3377



\$749,900
MLS 6698982 Residential
4501 16th Avenue
Pine River MN 56474