



MLS 6698999 Residential

**\$379,900**

1,580 sq ft  
1 bedrooms  
2 baths

24600 County 4  
Park Rapids MN 56470

Status: Pending

#### Description:

Park Rapids country home with a prime location between Blue and Big Sand lakes. 11 stunning acres provides the perfect canvas for this custom build. The home features an attractive square log and copper (yes, copper!) exterior with nearly 1,600 finished square feet. Includes hickory cabinetry, cedar stairs/railings, exposed timber framing and a generous display of windows bringing the indoor and outdoor spaces together in seamless fashion. A free standing Jotul stove showcased in a distinctive floor to ceiling cove inset add style and dimension. Copper accents include the roof, gutters/downs and siding. A 28x36 triple garage with a heated 18x28 bonus space (upper level) has the vehicles, storage needs and accessory space met. There is also a fun, theme styled shed that can be utilized in so many ways. New survey, compliant septic and Paul Bunyan fiber optic internet is available at property line.

#### Additional Details:

Year Built	2000
Lot Acres	11
Lot Dimensions	1432 x 1012 x 800
Garage Stalls	3
School District	309
Taxes	\$1,639
Taxes with Assessments	\$1,860
Tax Year	2025

#### Additional Features:

**Basement:** Slab **Fuel:** Propane, Wood **Garage:** 3 **Heat:** Forced Air, Fireplace(s), Wood Stove **Sewer:** Private Sewer, Septic System Compliant - Yes, Tank with Drainage Field **Water:** Drilled, Private, Well **Air Conditioning:** None

#### Driving Directions:

From CR 4 @ Hwy 34: Go North on CR 4 past CR 40 to property on right.



Listed By:  
Affinity Real Estate Inc.

Affinity Real Estate Inc. participates in the Regional Multiple Listing Service of Minnesota, Inc Broker Reciprocity (sm) program, allowing us to display other broker's listings on our website. All properties are subject to prior sale, change or withdrawal.



Call Affinity Real Estate

**218-237-3333**

[info@affinityrealestate.com](mailto:info@affinityrealestate.com)



Affinity Real Estate - 600 Park Avenue South - Park Rapids MN 56470



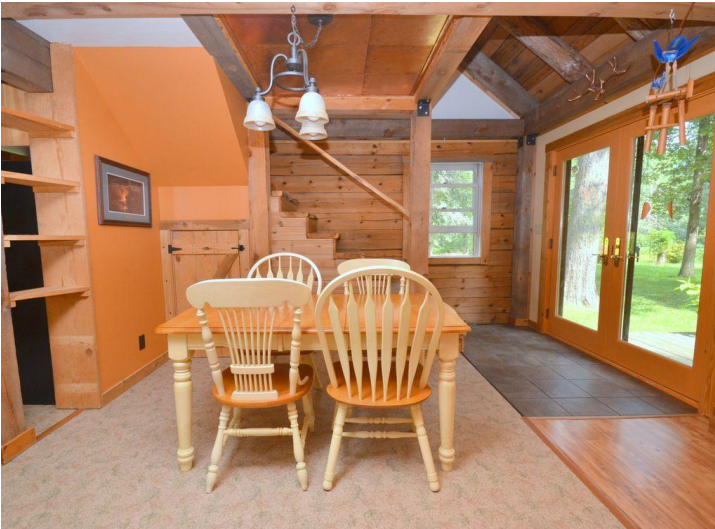


website: [www.AffinityRealEstate.com](http://www.AffinityRealEstate.com) | email: [info@affinityrealestate.com](mailto:info@affinityrealestate.com) | office: 218-237-3333 | fax: 218-237-3377

**Affinity**  
REAL ESTATE INC

**\$379,900**  
MLS 6698999 Residential  
24600 County 4  
Park Rapids MN 56470





website: [www.AffinityRealEstate.com](http://www.AffinityRealEstate.com) | email: [info@affinityrealestate.com](mailto:info@affinityrealestate.com) | office: 218-237-3333 | fax: 218-237-3377

**Affinity**  
REAL ESTATE INC

**\$379,900**  
MLS 6698999 Residential  
24600 County 4  
Park Rapids MN 56470





website: [www.AffinityRealEstate.com](http://www.AffinityRealEstate.com) | email: [info@affinityrealestate.com](mailto:info@affinityrealestate.com) | office: 218-237-3333 | fax: 218-237-3377

**Affinity**  
REAL ESTATE INC

**\$379,900**  
MLS 6698999 Residential  
24600 County 4  
Park Rapids MN 56470



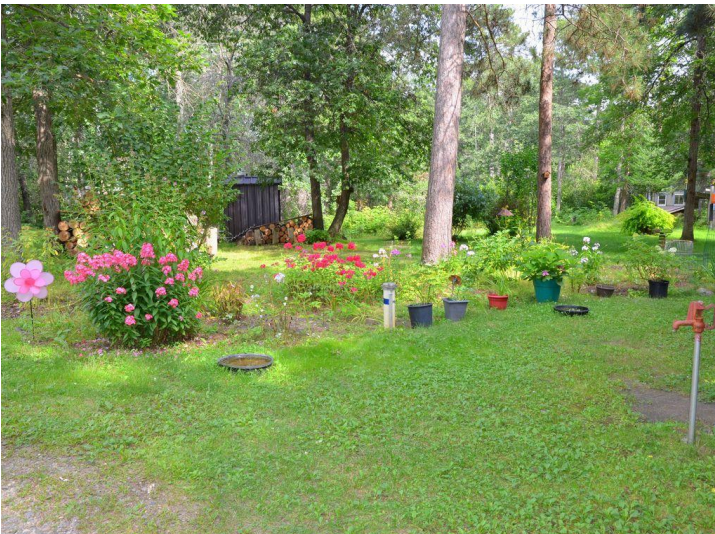
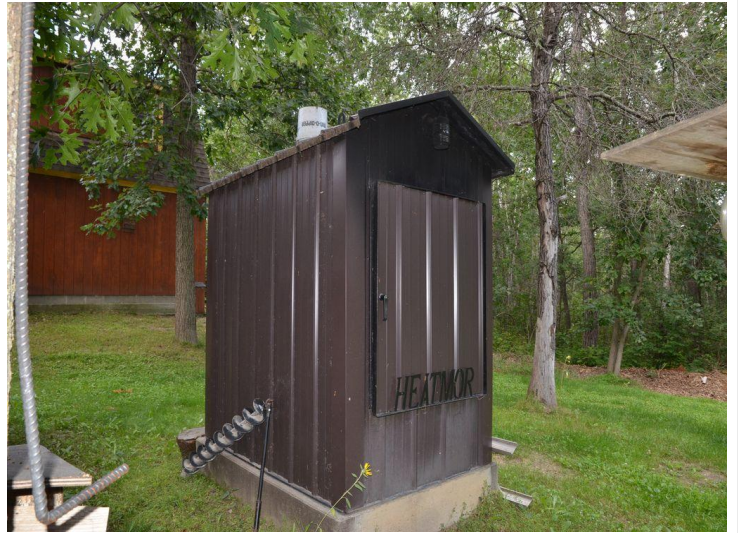


website: [www.AffinityRealEstate.com](http://www.AffinityRealEstate.com) | email: [info@affinityrealestate.com](mailto:info@affinityrealestate.com) | office: 218-237-3333 | fax: 218-237-3377

**Affinity**  
REAL ESTATE INC

**\$379,900**  
MLS 6698999 Residential  
24600 County 4  
Park Rapids MN 56470





website: [www.AffinityRealEstate.com](http://www.AffinityRealEstate.com) | email: [info@affinityrealestate.com](mailto:info@affinityrealestate.com) | office: 218-237-3333 | fax: 218-237-3377



**\$379,900**  
MLS 6698999 Residential  
24600 County 4  
Park Rapids MN 56470