



MLS 6699134 Residential

\$350,000

2,324 sq ft
4 bedrooms
2 baths

1073 Prairiewood Drive
Pillager MN 56473

Status: Active

Description:

Should pass for any loan-updated and move in ready. New refrigerator, new garage door system, newer roof, newer High Efficiency furnace and AC unit . This home is ready for you to move right in and enjoy your life. Fenced in garden, many Perennials, pine, spruce and birch trees. Watch the wildlife from your deck or view through several large windows. Just 5 minutes to Baxter and the ability for students to go to Brainerd or the Pillager schools.

Additional Details:

Year Built	2005
Lot Acres	2.5
Lot Dimensions	380 x 307 x 378 x 290
Garage Stalls	2
School District	116
Taxes	\$1,726
Taxes with Assessments	\$1,792
Tax Year	2025

Additional Features:

Basement: Block, Daylight/Lookout Windows, Egress Window(s), Finished, Storage Space, Tile Shower **Fuel:** Natural Gas **Garage:** 2 **Heat:** Forced Air **Sewer:** Septic System Compliant - Yes, Tank with Drainage Field **Water:** Submersible - 4 Inch, Drilled, Well **Air Conditioning:** Central Air

Driving Directions:

GO EAST ON HWY 210 TO LEFT ON 11TH AVE SW TO LEFT ON PRAIRIEWOOD DR.



Listed By:
Keller Williams Realty Professionals

Affinity Real Estate Inc. participates in the Regional Multiple Listing Service of Minnesota, Inc Broker Reciprocity (sm) program, allowing us to display other broker's listings on our website. All properties are subject to prior sale, change or withdrawal.



Call Affinity Real Estate

218-237-3333

info@affinityrealestate.com



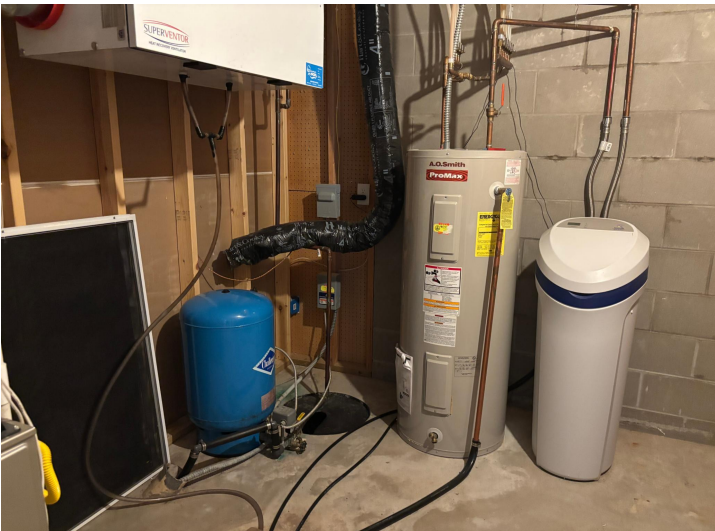
Affinity Real Estate - 600 Park Avenue South - Park Rapids MN 56470



website: www.AffinityRealEstate.com | email: info@affinityrealestate.com | office: 218-237-3333 | fax: 218-237-3377

Affinity
REAL ESTATE INC

\$350,000
MLS 6699134 Residential
1073 Prairiewood Drive
Pillager MN 56473



website: www.AffinityRealEstate.com | email: info@affinityrealestate.com | office: 218-237-3333 | fax: 218-237-3377

Affinity
REAL ESTATE INC

\$350,000
MLS 6699134 Residential
1073 Prairiewood Drive
Pillager MN 56473



website: www.AffinityRealEstate.com | email: info@affinityrealestate.com | office: 218-237-3333 | fax: 218-237-3377

Affinity
REAL ESTATE INC

\$350,000
MLS 6699134 Residential
1073 Prairiewood Drive
Pillager MN 56473