



MLS 6699704 Lake Land

**\$77,900**

**Description:**

100 feet of shoreline on Leech Lake on a paved road. Access to Leech Lake Chain and across from the Moonlight Bay Golf Course and Driving Range. This lot is a perfect spot to build your beautiful lake home. Drive by and see today!

**Additional Details:**

Lot Acres	0.5
Lot Dimensions	100x200x107x231
School District	113
Taxes	\$435
Taxes with Assessments	\$435
Tax Year	2025

**Additional Features:**

**Driving Directions:**

From Bemidji take US Hwy 2 W approximately 11 miles to MN-371 in Cass Lake. Right on MN-371 approximately 16 miles to Wedgewood Dr NW. Left on Wedgewood - lot on the right.



Listed By:  
Better Homes and Gardens Real Estate First Choice

Affinity Real Estate Inc. participates in the Regional Multiple Listing Service of Minnesota, Inc Broker Reciprocity (sm) program, allowing us to display other broker's listings on our website. All properties are subject to prior sale, change or withdrawal.



**Call Affinity Real Estate**

**218-237-3333**

**info@affinityrealestate.com**



**Affinity Real Estate - 600 Park Avenue South - Park Rapids MN 56470**





website: [www.AffinityRealEstate.com](http://www.AffinityRealEstate.com) | email: [info@affinityrealestate.com](mailto:info@affinityrealestate.com) | office: 218-237-3333 | fax: 218-237-3377



**\$77,900**  
 MLS 6699704 Lake Land  
 TBD Wedgewood Road  
 Walker MN 56484





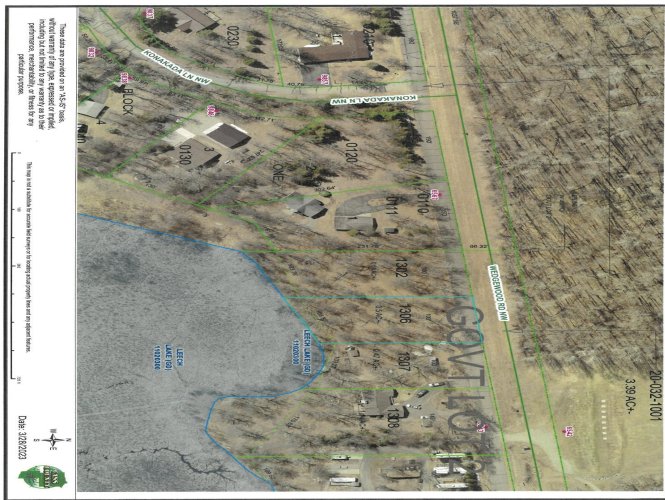
website: [www.AffinityRealEstate.com](http://www.AffinityRealEstate.com) | email: [info@affinityrealestate.com](mailto:info@affinityrealestate.com) | office: 218-237-3333 | fax: 218-237-3377



**\$77,900**

MLS 6699704 Lake Land  
TBD Wedgewood Road  
Walker MN 56484





website: [www.AffinityRealEstate.com](http://www.AffinityRealEstate.com) | email: [info@affinityrealestate.com](mailto:info@affinityrealestate.com) | office: 218-237-3333 | fax: 218-237-3377



**\$77,900**  
 MLS 6699704 Lake Land  
 TBD Wedgewood Road  
 Walker MN 56484