



MLS 6699815 Residential

\$410,000

2,016 sq ft
4 bedrooms
2 baths

14208 County 9
Becida MN 56678

Status: Active

Description:

Nestled on 22.3 acres just off County Road 9 and 14 miles to Bemidji, this beautifully updated 4-bedroom, 2-bathroom home offers the perfect blend of privacy, comfort, and functionality. Surrounded by mature trees and natural cover, the property is ideal for those who love wildlife, space, and country living.

Boasting over 2,000 square feet of living space, the home has seen a complete transformation. Enjoy a brand-new kitchen featuring modern cabinetry, sleek countertops, and a stainless steel appliance package. New flooring stretches throughout the home, complemented by new windows that bring in natural light and views of the surrounding pines. Additional recent upgrades include a new 3/4 bath in the lower level, new septic system, new deck off the kitchen, front landscaping, and a welcoming new front porch.

The layout offers functionality with 2 bedrooms on the main floor and 2 more on the lower level. The spacious kitchen offers ample cabinetry and flows into a cozy living room that looks out over towering pines and a versatile outbuilding—perfect for a barn, workshop, or storage. Downstairs, you'll find a large family room and two additional bedrooms, making it ideal for hosting guests or spreading out.

What truly sets this home apart is the oversized mudroom/utility area that leads into the finished, attached 2-stall garage. For even more space, there's a 24x24 detached garage and a 20x28 barn-style building to accommodate all your hobbies and storage needs.

Want even more land? The adjacent 69-acre parcel is also available for purchase (MLS #6624136) for \$159,000. Whether you're seeking privacy, hobby farm potential, or a peaceful retreat in the woods, this property checks all the boxes.

Additional Details:

Year Built 1979
Lot Acres 22.3
Lot Dimensions 1262x760.5
Garage Stalls 3

School District 31
Listed By: \$1,448
Headwaters Realty Services LLC

Taxes with Assessments \$1,448
Affinity Real Estate Inc. participates in the Regional Multiple Listing
Tax Year of Minnesota, Inc Broker Reciprocity (sm) program, allowing
us to display other broker's listings on our website. All properties are
Additional Features: change or withdrawal.

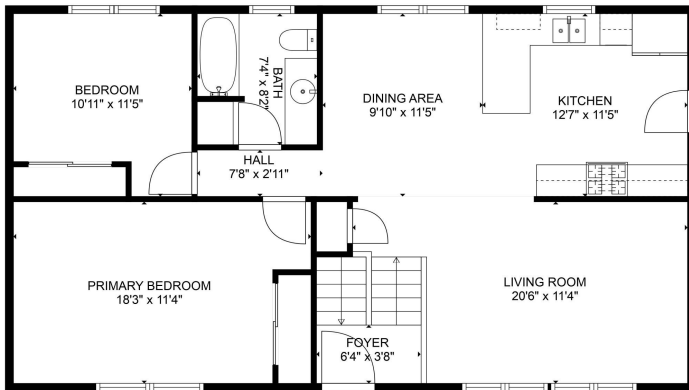
Basement: Egress Window(s), Finished, Full Fuel: Propane Garage: 3 Heat: Baseboard, Ductless Mini-Split Sewer: Private Sewer Water: Well
Air Conditioning: Ductless Mini-Split



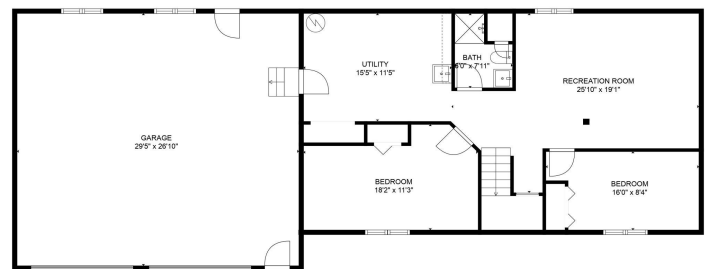
Call Affinity Real Estate
218-237-3333
info@affinityrealestate.com



Driving Directions:



TOTAL: 1900 sq. ft.
 BELOW GROUND: 950 sq. ft. FLOOR 2: 950 sq. ft.
 EXCLUDED AREAS: GARAGE: 789 sq. ft.
 FLOOR PLAN CREATED BY CIRCULAR AND MEASUREMENTS DEEMED HIGHLY RELIABLE BUT NOT GUARANTEED.

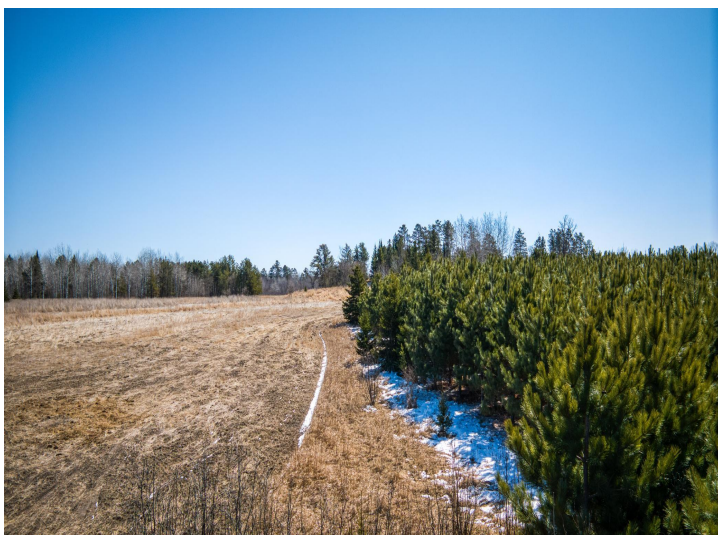


TOTAL: 1900 sq. ft.
 BELOW GROUND: 950 sq. ft. FLOOR 2: 950 sq. ft.
 EXCLUDED AREAS: GARAGE: 789 sq. ft.
 FLOOR PLAN CREATED BY CIRCULAR AND MEASUREMENTS DEEMED HIGHLY RELIABLE BUT NOT GUARANTEED.

website: www.AffinityRealEstate.com | email: info@affinityrealestate.com | office: 218-237-3333 | fax: 218-237-3377

Affinity
 REAL ESTATE INC

\$410,000
 MLS 6699815 Residential
 14208 County 9
 Becida MN 56678



website: www.AffinityRealEstate.com | email: info@affinityrealestate.com | office: 218-237-3333 | fax:218-237-3377



\$410,000
 MLS 6699815 Residential
 14208 County 9
 Becida MN 56678



website: www.AffinityRealEstate.com | email: info@affinityrealestate.com | office: 218-237-3333 | fax: 218-237-3377

Affinity
REAL ESTATE INC

\$410,000
MLS 6699815 Residential
14208 County 9
Becida MN 56678



website: www.AffinityRealEstate.com | email: info@affinityrealestate.com | office: 218-237-3333 | fax: 218-237-3377

Affinity
REAL ESTATE INC

\$410,000
MLS 6699815 Residential
14208 County 9
Becida MN 56678



website: www.AffinityRealEstate.com | email: info@affinityrealestate.com | office: 218-237-3333 | fax: 218-237-3377



\$410,000
 MLS 6699815 Residential
 14208 County 9
 Becida MN 56678



website: www.AffinityRealEstate.com | email: info@affinityrealestate.com | office: 218-237-3333 | fax: 218-237-3377

Affinity
REAL ESTATE INC

\$410,000
MLS 6699815 Residential
14208 County 9
Becida MN 56678



website: www.AffinityRealEstate.com | email: info@affinityrealestate.com | office: 218-237-3333 | fax: 218-237-3377



\$410,000
 MLS 6699815 Residential
 14208 County 9
 Becida MN 56678



website: www.AffinityRealEstate.com | email: info@affinityrealestate.com | office: 218-237-3333 | fax: 218-237-3377



\$410,000
 MLS 6699815 Residential
 14208 County 9
 Becida MN 56678



website: www.AffinityRealEstate.com | email: info@affinityrealestate.com | office: 218-237-3333 | fax: 218-237-3377



\$410,000
 MLS 6699815 Residential
 14208 County 9
 Becida MN 56678



website: www.AffinityRealEstate.com | email: info@affinityrealestate.com | office: 218-237-3333 | fax: 218-237-3377



\$410,000
MLS 6699815 Residential
14208 County 9
Becida MN 56678



website: www.AffinityRealEstate.com | email: info@affinityrealestate.com | office: 218-237-3333 | fax: 218-237-3377



\$410,000
 MLS 6699815 Residential
 14208 County 9
 Becida MN 56678



website: www.AffinityRealEstate.com | email: info@affinityrealestate.com | office: 218-237-3333 | fax: 218-237-3377



\$410,000
 MLS 6699815 Residential
 14208 County 9
 Becida MN 56678



website: www.AffinityRealEstate.com | email: info@affinityrealestate.com | office: 218-237-3333 | fax: 218-237-3377



\$410,000
 MLS 6699815 Residential
 14208 County 9
 Becida MN 56678



website: www.AffinityRealEstate.com | email: info@affinityrealestate.com | office: 218-237-3333 | fax: 218-237-3377



\$410,000
 MLS 6699815 Residential
 14208 County 9
 Becida MN 56678



website: www.AffinityRealEstate.com | email: info@affinityrealestate.com | office: 218-237-3333 | fax:218-237-3377



\$410,000
MLS 6699815 Residential
14208 County 9
Becida MN 56678