

MLS 6699892 Land

\$135,000

0 Square Feet
Raw Land

507 Ash Avenue
Wadena MN 56482

Status: Active

Description:

HIGH TRAFFIC COUNT.....DIRECT ACCESS TO US HWY 10..... MnDot has settled and we now know what is available to building.

Additional Details:

Lot Dimensions	679.00 x 120.00
School District	2155
Taxes	\$1,116
Taxes with Assessments	\$1,116
Tax Year	2024

Additional Features:

Driving Directions:

From the intersection of US Hwy 10 and 71, West on US Hwy 10 1/2 mile, Subject on the South side of US Hwy 10



Listed By:
The Gores Company

Affinity Real Estate Inc. participates in the Regional Multiple Listing Service of Minnesota, Inc Broker Reciprocity (sm) program, allowing us to display other broker's listings on our website. All properties are subject to prior sale, change or withdrawal.



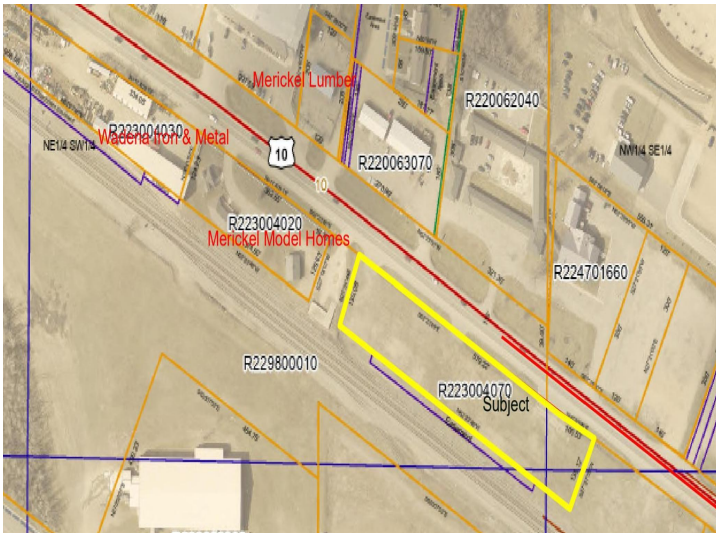
Call Affinity Real Estate

218-237-3333

info@affinityrealestate.com



Affinity Real Estate - 600 Park Avenue South - Park Rapids MN 56470



website: www.AffinityRealEstate.com | email: info@affinityrealestate.com | office: 218-237-3333 | fax: 218-237-3377



\$135,000
MLS 6699892 Land
507 Ash Avenue
Wadena MN 56482