



MLS 6699957 Land

\$59,000

40 Acres
Raw Land

xxx County Road 30
Staples MN 56479

Status: Pending

Description:

Affordable 40 acres in Wadena County is priced to sell! This area has an abundance of wildlife and is know for its hunting. The parcel features a mix of high and low ground, perfect for attracting all variety of wildlife. A short drive to the Brainerd lakes area, lake Mille Lacs, and many other world class fishing lake makes this a desirable location for any outdoor enthusiast.

Additional Details:

Lot Acres	40
Lot Dimensions	1339x1340x1334x1360
School District	2170
Taxes	\$350
Taxes with Assessments	\$350
Tax Year	2024

Additional Features:

Driving Directions:

From Staples, take Cass Line Road/ County road 30 north. The property will be located on the west side of the road.



Listed By:
Timber Ghost Realty, LLC

Affinity Real Estate Inc. participates in the Regional Multiple Listing Service of Minnesota, Inc Broker Reciprocity (sm) program, allowing us to display other broker's listings on our website. All properties are subject to prior sale, change or withdrawal.



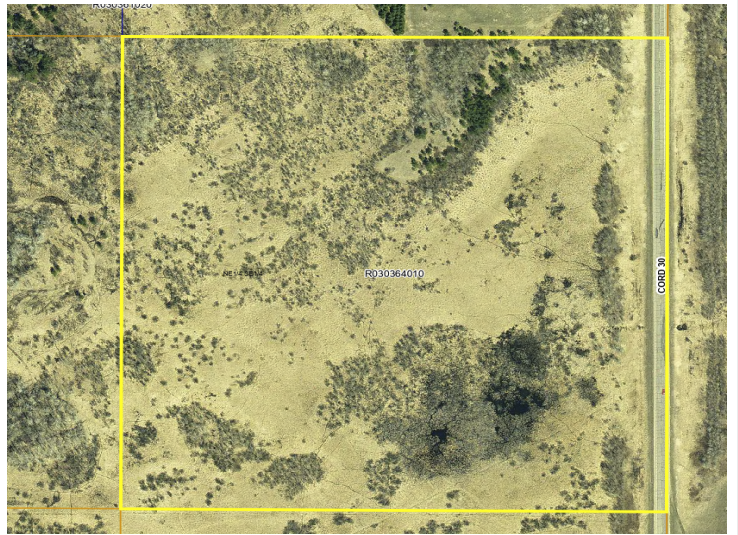
Call Affinity Real Estate

218-237-3333

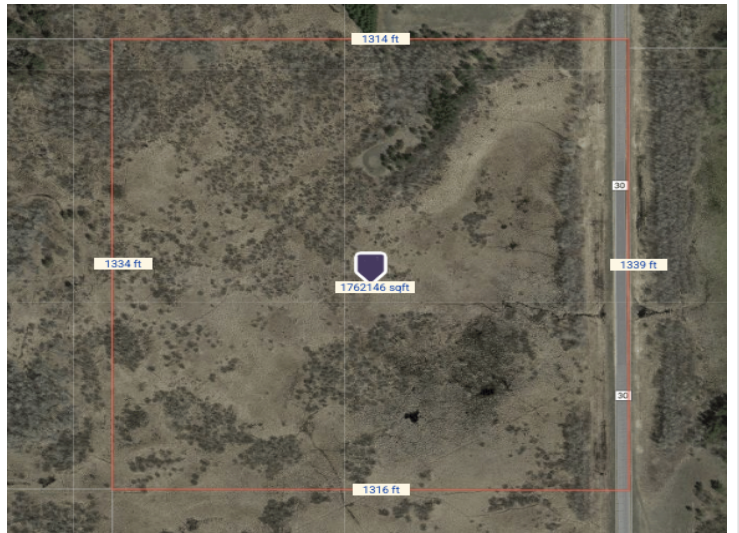
info@affinityrealestate.com



Affinity Real Estate - 600 Park Avenue South - Park Rapids MN 56470



MLS 6699957 Land
xxx County Road 30
Staples MN 56479



website: www.AffinityRealEstate.com | email: info@affinityrealestate.com | office: 218-237-3333 | fax: 218-237-3377



\$59,000

MLS 6699957 Land
xxx County Road 30
Staples MN 56479