



MLS 6700055 Land

**\$170,000**

10.25 Acres

Other

Lot 10 Acre NE 239th Avenue  
Nevis MN 56467

Status: Pending

#### Description:

Build the home of your dreams on this beautiful 10.25 Acre Parcel located close to the pristine Lake Belle Taine. Great location for the outdoor enthusiasts and those looking for a tranquil lifestyle. In addition to the abundance of lakes in the area, you will find the Heartland State Trail which offers fun for biking, hiking, snowmobiling. Additional adjacent property is also available : See MLS Numbers 6583637, 6700205 (Note: Tax amount reflects 34.45 acres, which is currently in the process of being split).

#### Additional Details:

Lot Acres	10.25
Lot Dimensions	706x616
School District	308
Taxes	\$8,521
Taxes with Assessments	\$8,742
Tax Year	2025

#### Additional Features:

#### Driving Directions:

W on Co Rd 18 out of Nevis; take L on 239th Ave



Listed By:  
RE/MAX Results

Affinity Real Estate Inc. participates in the Regional Multiple Listing Service of Minnesota, Inc Broker Reciprocity (sm) program, allowing us to display other broker's listings on our website. All properties are subject to prior sale, change or withdrawal.



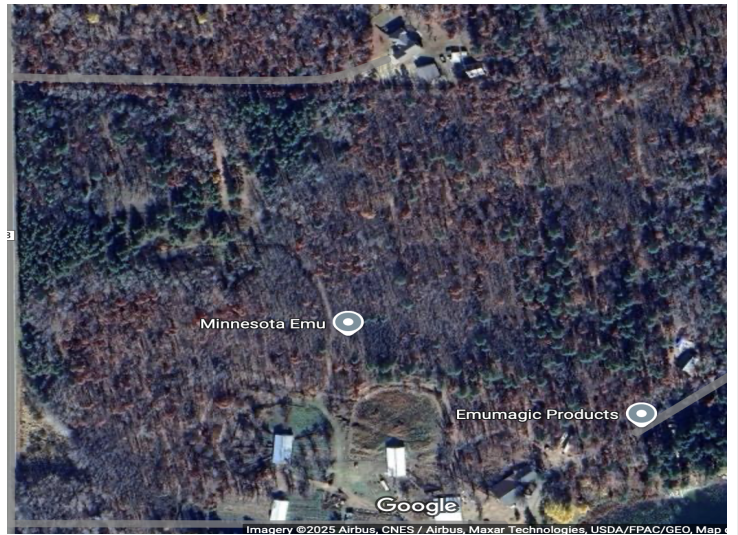
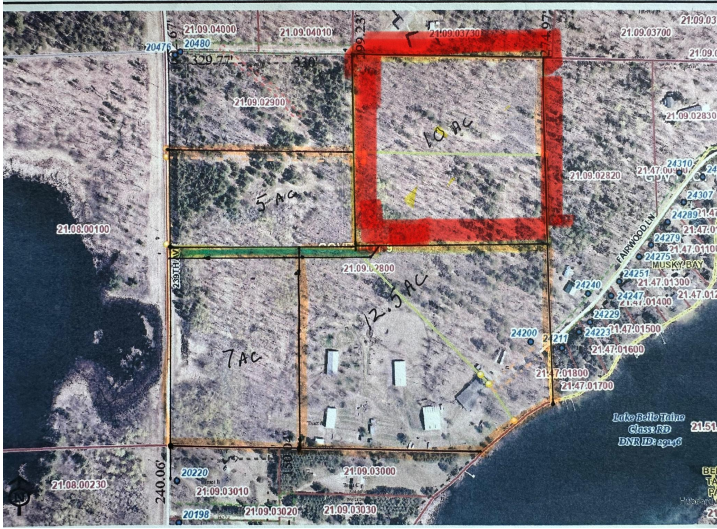
Call Affinity Real Estate

**218-237-3333**

[info@affinityrealestate.com](mailto:info@affinityrealestate.com)



Affinity Real Estate - 600 Park Avenue South - Park Rapids MN 56470



website: [www.AffinityRealEstate.com](http://www.AffinityRealEstate.com) | email: [info@affinityrealestate.com](mailto:info@affinityrealestate.com) | office: 218-237-3333 | fax: 218-237-3377



**\$170,000**  
 MLS 6700055 Land  
 Lot 10 Acre NE 239th  
 Avenue  
 Nevis MN 56467