



MLS 6700205 Land

\$85,000

5 Acres

Other

Lot 5 Acre 239th Avenue
Nevis MN 56467

Status: Active

Description:

Build the home of your dreams on this beautiful 5 Acre Parcel located close to the pristine Lake Belle Taine. Great location for the outdoor enthusiasts and those looking for a tranquil lifestyle. In addition to the abundance of lakes in the area, you will find the Heartland State Trail which offers fun for biking, hiking, snowmobiling. Additional adjacent property is also available : 8.94 Acre Hobby Farm. There is a recorded easement off 239th St. for alternative access. (Note: Tax amount reflects 34.45 acres, which just went through an Administrative Split). Seller will accept a Contract For Deed with acceptable terms.

Additional Details:

Lot Acres	5
Lot Dimensions	330x600
School District	308
Taxes	\$8,521
Taxes with Assessments	\$8,720
Tax Year	2025

Additional Features:

Driving Directions:

Head W from Nevis on Co Rd 18, turn L on 239th Avenue



Listed By:
RE/MAX Results

Affinity Real Estate Inc. participates in the Regional Multiple Listing Service of Minnesota, Inc Broker Reciprocity (sm) program, allowing us to display other broker's listings on our website. All properties are subject to prior sale, change or withdrawal.



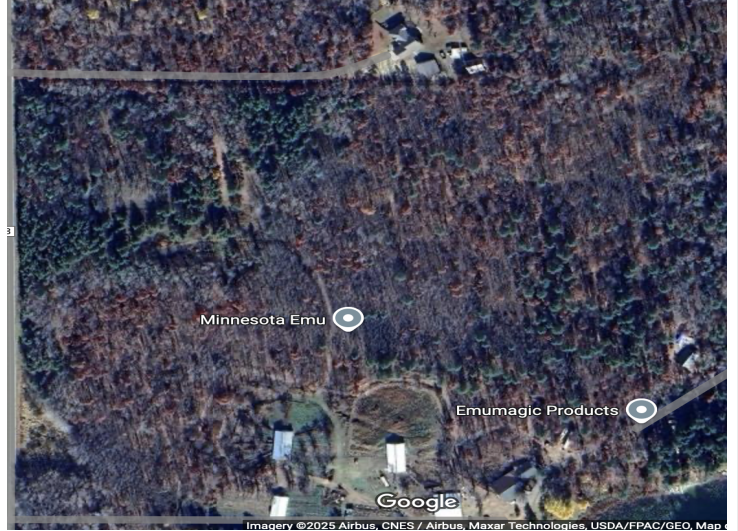
Call Affinity Real Estate

218-237-3333

info@affinityrealestate.com



Affinity Real Estate - 600 Park Avenue South - Park Rapids MN 56470



website: www.AffinityRealEstate.com | email: info@affinityrealestate.com | office: 218-237-3333 | fax: 218-237-3377



\$85,000
 MLS 6700205 Land
 Lot 5 Acre 239th Avenue
 Nevis MN 56467