



MLS 6700305 Commercial

\$599,000

210 5th Street
Brainerd MN 56401

Status: Active

Description:

Excellent opportunity to invest in a multi-level office-warehouse building in West Brainerd! Property is centrally located between Brainerd and Baxter, near many major amenities and area businesses. Spacious office section contains 7 offices, 2 conference rooms, 3 restrooms, a locker room & shower plus an upper level deck - ideal for an owner-occupier or to lease out. Expansive warehouse is comprised of 2 shops, an office, and 6 drive-in doors plus a large paved parking lot. Prime opportunity for an office-service business seeking affordable space in a great location! Purchase the entire property or lease just the office.

Additional Details:

Year Built	1994
Lot Acres	0.64
Lot Dimensions	200x140
Garage Stalls	6
School District	181
Taxes	\$9,828
Taxes with Assessments	\$9,828
Tax Year	2025

Additional Features:

Fuel: Electric, Natural Gas **Heat:** Baseboard, Forced Air, Space Heater

Driving Directions:

From Hwy 210/371 intersection in Baxter - East on Hwy 210 (Washington St) approx. 1 1/4 miles - South on NW 5th St - Property is on the East in between Charles St and Williams St



Listed By:
Close-Converse Commercial Prop

Affinity Real Estate Inc. participates in the Regional Multiple Listing Service of Minnesota, Inc Broker Reciprocity (sm) program, allowing us to display other broker's listings on our website. All properties are subject to prior sale, change or withdrawal.



Call Affinity Real Estate

218-237-3333

info@affinityrealestate.com



Affinity Real Estate - 600 Park Avenue South - Park Rapids MN 56470



website: www.AffinityRealEstate.com | email: info@affinityrealestate.com | office: 218-237-3333 | fax: 218-237-3377

Affinity
REAL ESTATE INC

\$599,000
MLS 6700305 Commercial
210 5th Street
Brainerd MN 56401



website: www.AffinityRealEstate.com | email: info@affinityrealestate.com | office: 218-237-3333 | fax: 218-237-3377



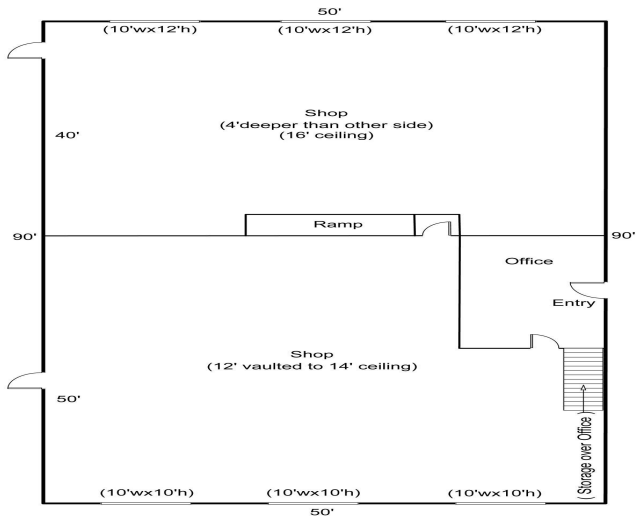
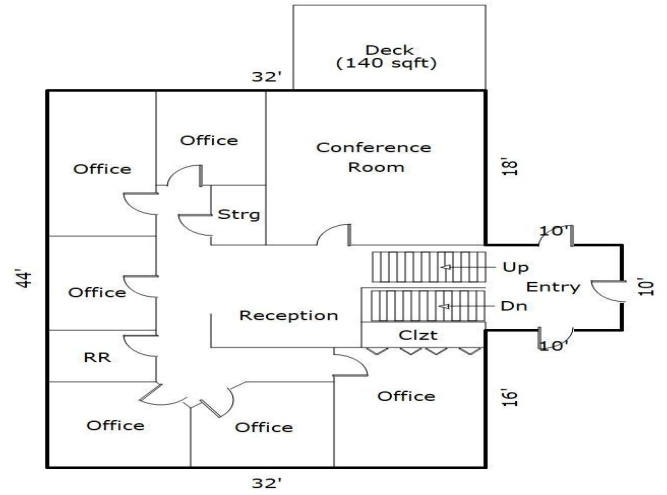
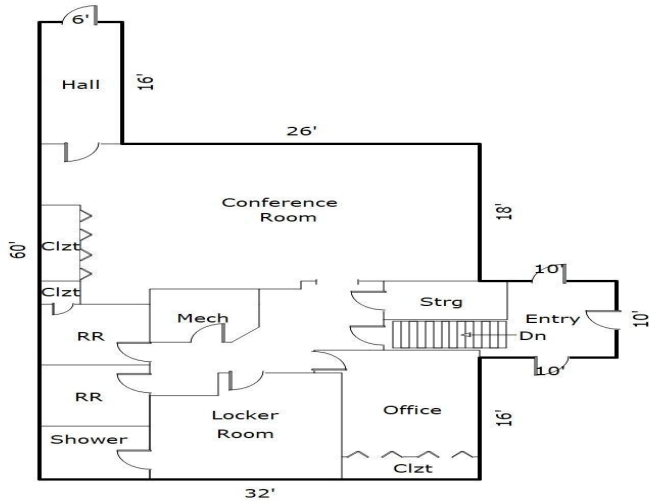
\$599,000
MLS 6700305 Commercial
210 5th Street
Brainerd MN 56401



website: www.AffinityRealEstate.com | email: info@affinityrealestate.com | office: 218-237-3333 | fax: 218-237-3377



\$599,000
MLS 6700305 Commercial
210 5th Street
Brainerd MN 56401



website: www.AffinityRealEstate.com | email: info@affinityrealestate.com | office: 218-237-3333 | fax: 218-237-3377

Affinity
REAL ESTATE INC

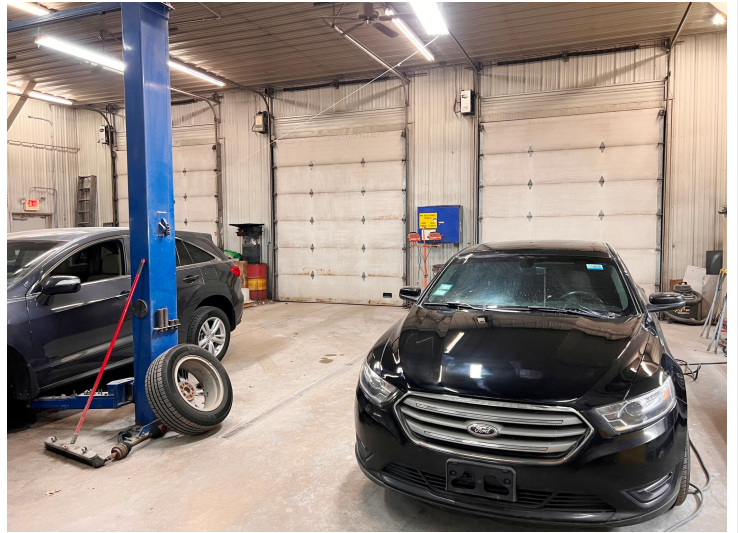
\$599,000
MLS 6700305 Commercial
210 5th Street
Brainerd MN 56401



website: www.AffinityRealEstate.com | email: info@affinityrealestate.com | office: 218-237-3333 | fax: 218-237-3377

Affinity
REAL ESTATE INC

\$599,000
MLS 6700305 Commercial
210 5th Street
Brainerd MN 56401



website: www.AffinityRealEstate.com | email: info@affinityrealestate.com | office: 218-237-3333 | fax: 218-237-3377



\$599,000
MLS 6700305 Commercial
210 5th Street
Brainerd MN 56401